



Enrollment, FTE, and Credit Hours 2002 -2011

Office of Institutional Research
Beacon Hall 285
Ext. 5220

This report contains a comparison of HCC enrollment among the other eleven community colleges in the State system.

Table of Contents

| | |
|--|-----------|
| Connecticut Community College _____ | 3 |
| System Wide Enrollment _____ | 3 |
| Student Headcount by Community College _____ | 3 |
| Full Time Student Headcount by Community College _____ | 4 |
| Part Time Student Headcount by Community College _____ | 6 |
| Full Time Equivalency by Community College _____ | 7 |
| Credit Hour Production by Community College _____ | 9 |
| Housatonic Community College Headcount Enrollment _____ | 10 |
| Fall 2002 to 2011 _____ | 10 |
| Housatonic Community College FTE Enrollment _____ | 11 |
| Fall 2002 to 2011 _____ | 11 |
| Housatonic Community College Credit Hour Production _____ | 12 |
| Fall 2002 to 2011 _____ | 12 |

*Please note: All college information is as of the freeze date in the fall semesters. A **freeze date** is when colleges choose to snapshot the data for that semester and use it for reporting purposes. Freeze dates usually occur after the initial drop/add period of classes is over. However, every community college has the autonomy to determine when the freeze data is for their college.*

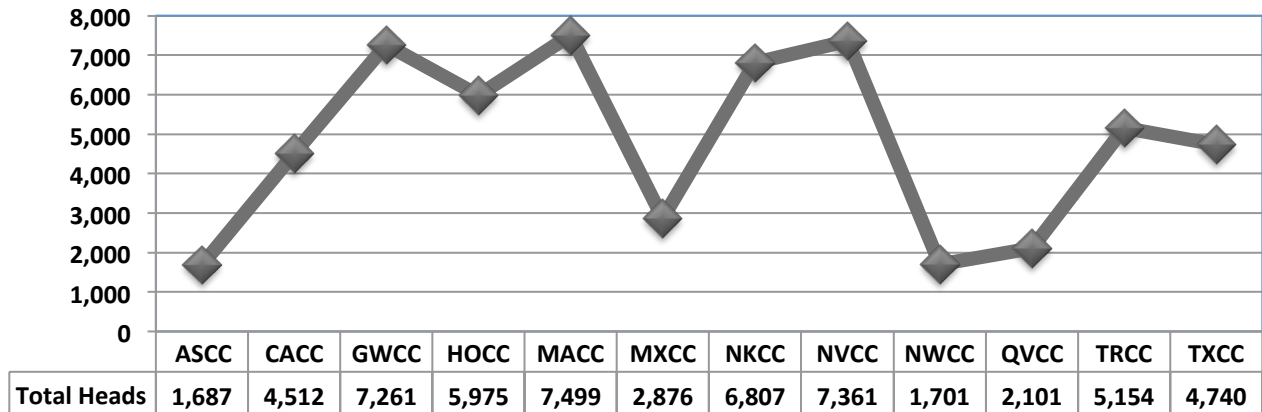
Connecticut Community College System Wide Enrollment

The freeze date has occurred for all twelve community colleges in the Connecticut Community System. Housatonic Community College remains the fifth largest college in the System for student headcount enrollment.

Student Headcount by Community College

Total Student Headcount - Fall 2011

by Community College

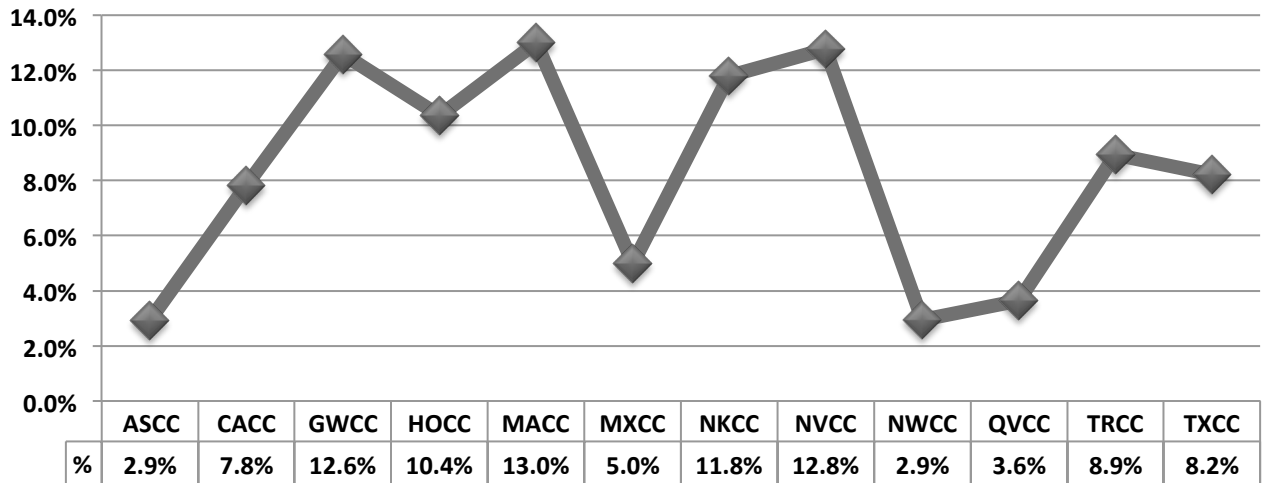


The total student headcount at Housatonic Community College is 5,975 which is 10.4% of the total Community College System student headcount enrollment of 57,674.

*Please note: All college information is as of the freeze date in the fall semesters. A **freeze date** is when colleges choose to snapshot the data for that semester and use it for reporting purposes. Freeze dates usually occur after the initial drop/add period of classes is over. However, every community college has the autonomy to determine when the freeze data is for their college.*

Total Student Headcount - Fall 2011

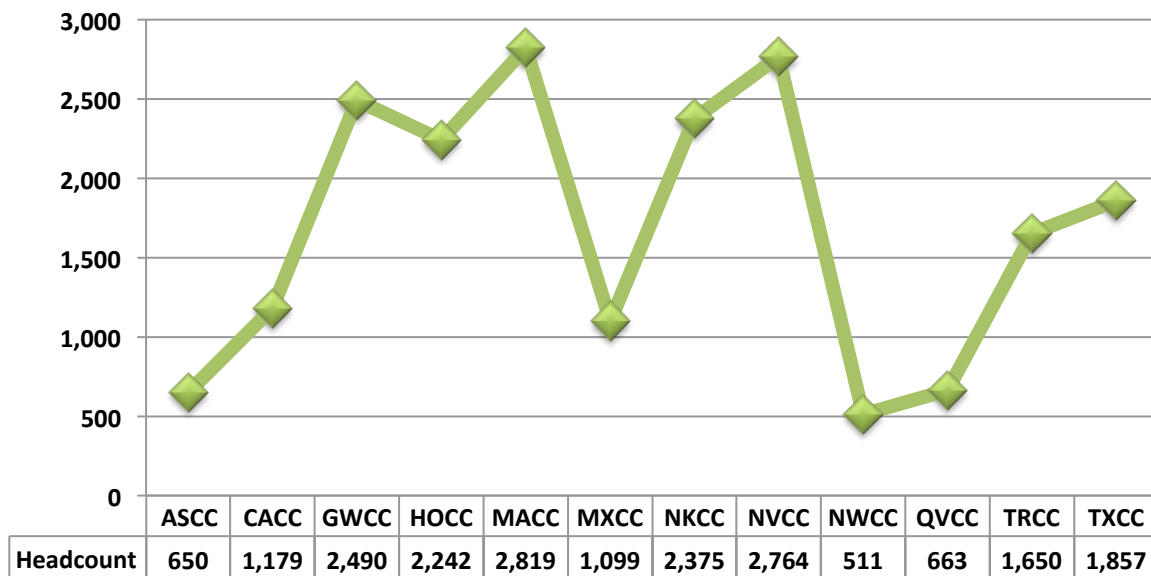
as percentage of Total Community College System Enrollment



Full Time Student Headcount by Community College

Full Time Student Headcount - Fall 2011

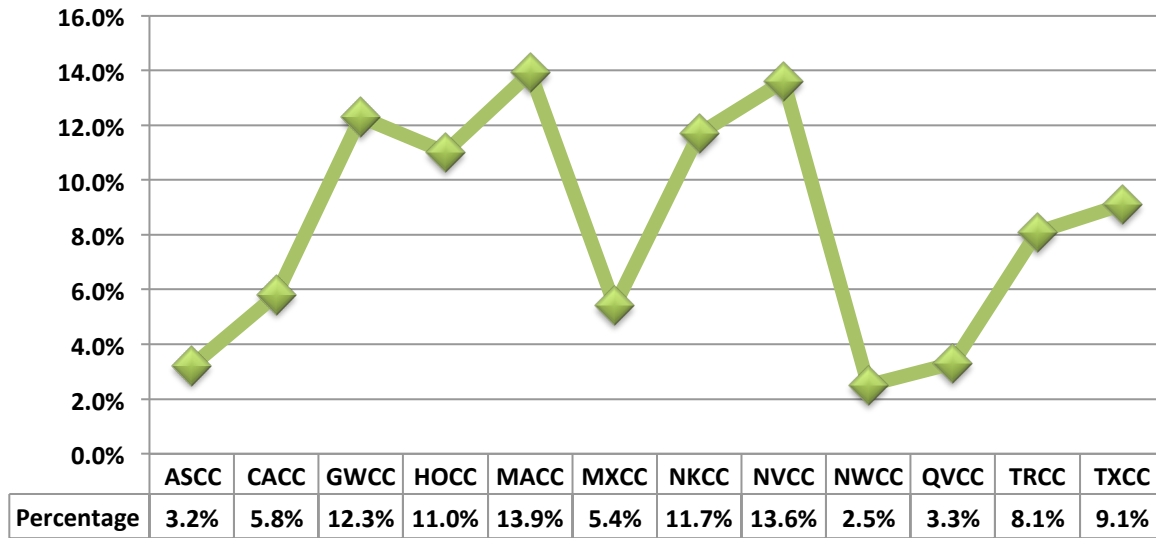
by Community College



The total of HCC students enrolled full time is 2,242, and eleven percent (11.0%) of the total full time students enrolled in the community college System of 20,299.

*Please note: All college information is as of the freeze date in the fall semesters. A **freeze date** is when colleges choose to snapshot the data for that semester and use it for reporting purposes. Freeze dates usually occur after the initial drop/add period of classes is over. However, every community college has the autonomy to determine when the freeze data is for their college.*

Full Time Student Headcount - Fall 2011
as percentage of Community College System

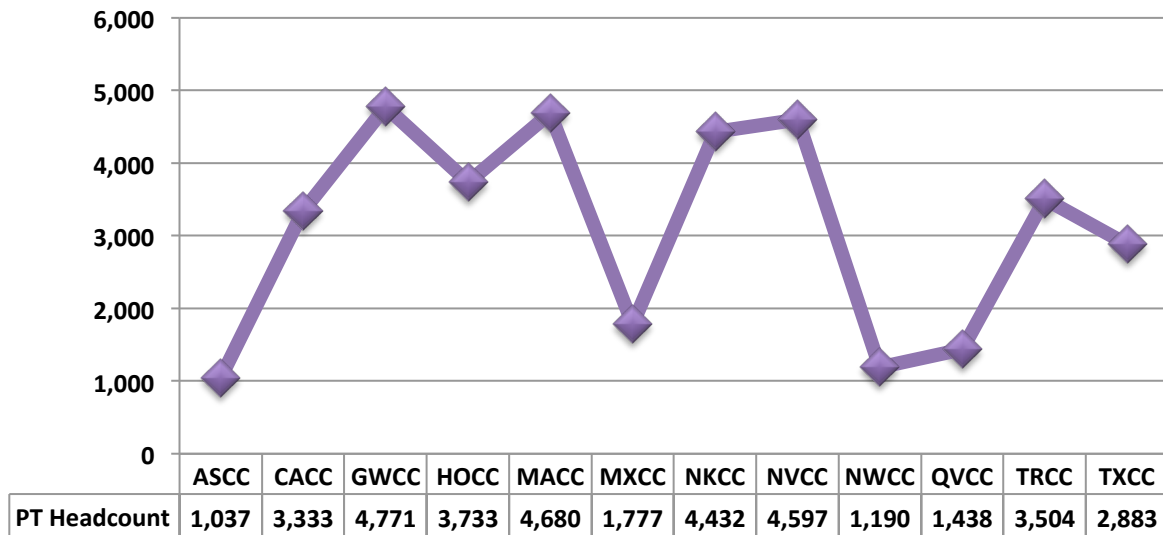


*Please note: All college information is as of the freeze date in the fall semesters. A **freeze date** is when colleges choose to snapshot the data for that semester and use it for reporting purposes. Freeze dates usually occur after the initial drop/add period of classes is over. However, every community college has the autonomy to determine when the freeze data is for their college.*

Part Time Student Headcount by Community College

Part Time Student Headcount - Fall 2011

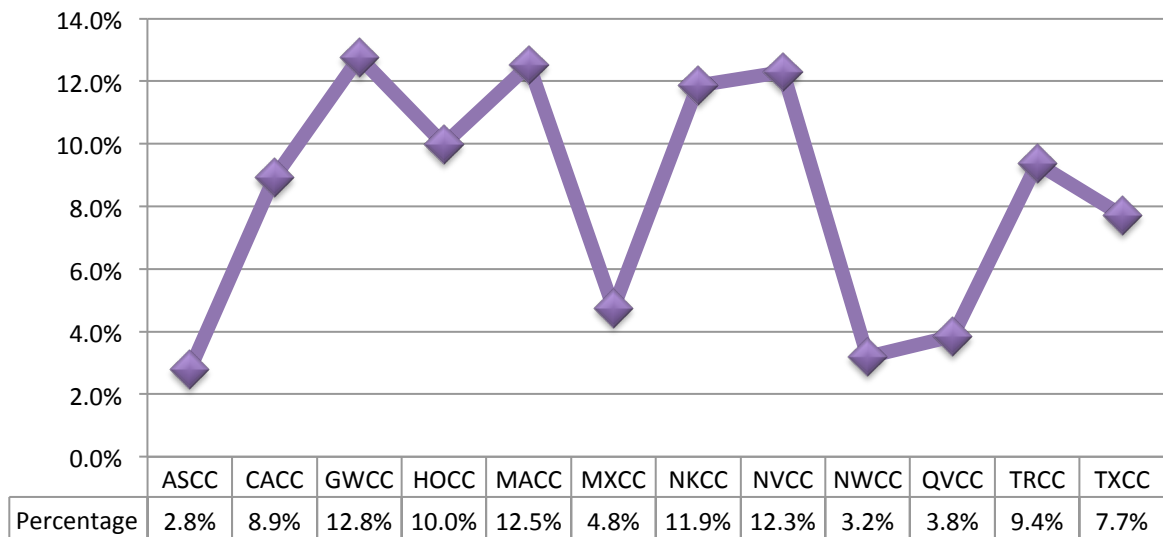
by Community College



Housatonic Community College enrolls 3,733 students part time this semester which is ten percent (10.0%) of the total 57,674 part time students enrolled in the Community College System.

Part Time Student Enrollment - Fall 2011

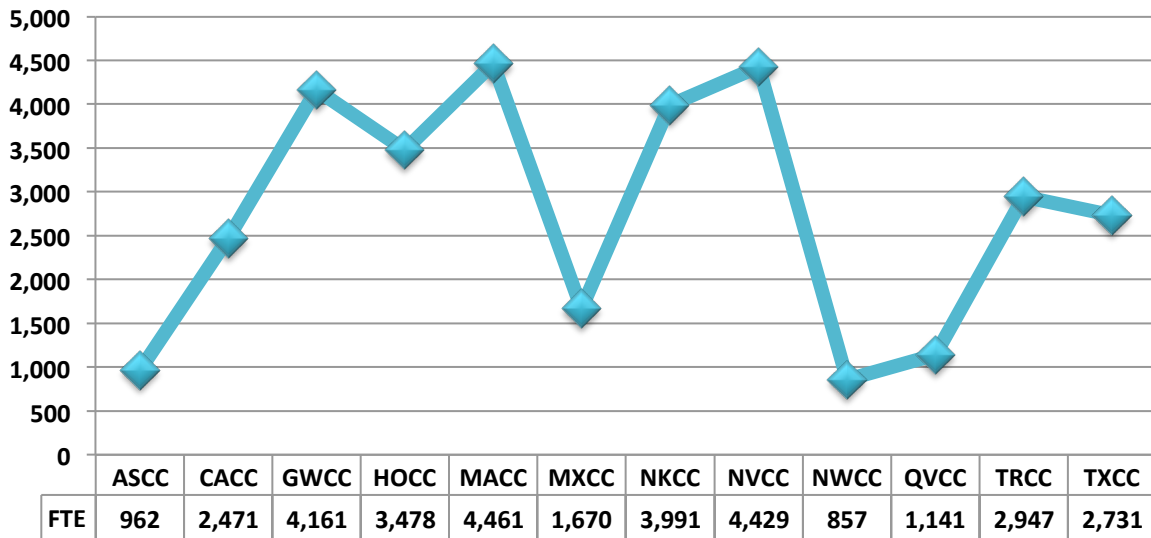
as percentage of total System Enrollment



*Please note: All college information is as of the freeze date in the fall semesters. A **freeze date** is when colleges choose to snapshot the data for that semester and use it for reporting purposes. Freeze dates usually occur after the initial drop/add period of classes is over. However, every community college has the autonomy to determine when the freeze data is for their college.*

Full Time Equivalency by Community College

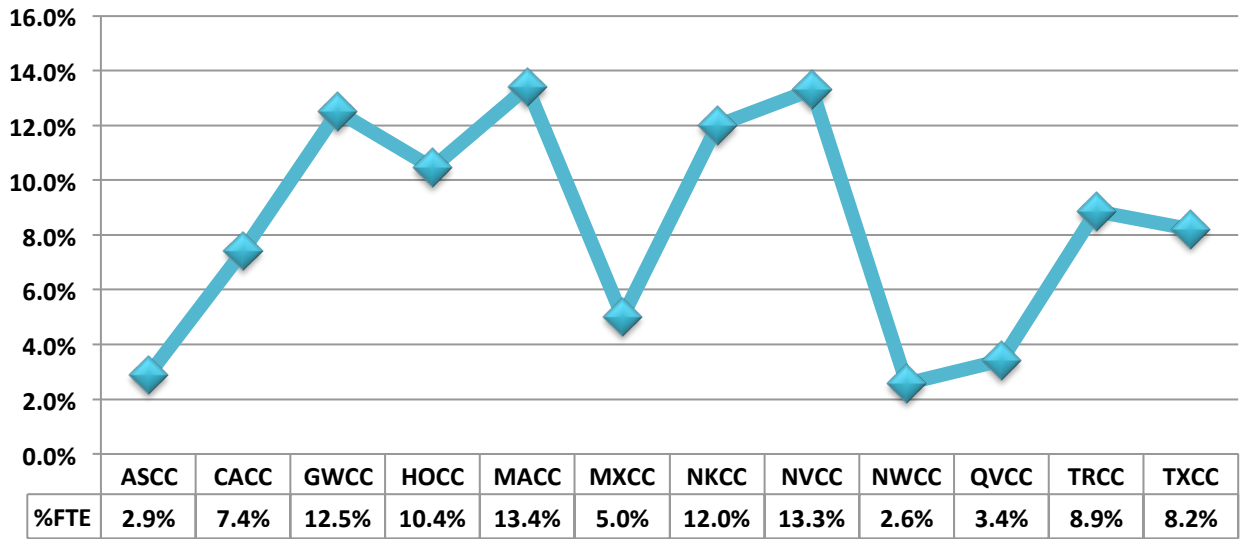
Full Time Equivalency (FTE) - Fall 2011
by Community College



Total full time equivalency at Housatonic Community College is 3,478 which is 10.4% of the total FTE students enrolled throughout the System.

*Please note: All college information is as of the freeze date in the fall semesters. A **freeze date** is when colleges choose to snapshot the data for that semester and use it for reporting purposes. Freeze dates usually occur after the initial drop/add period of classes is over. However, every community college has the autonomy to determine when the freeze data is for their college.*

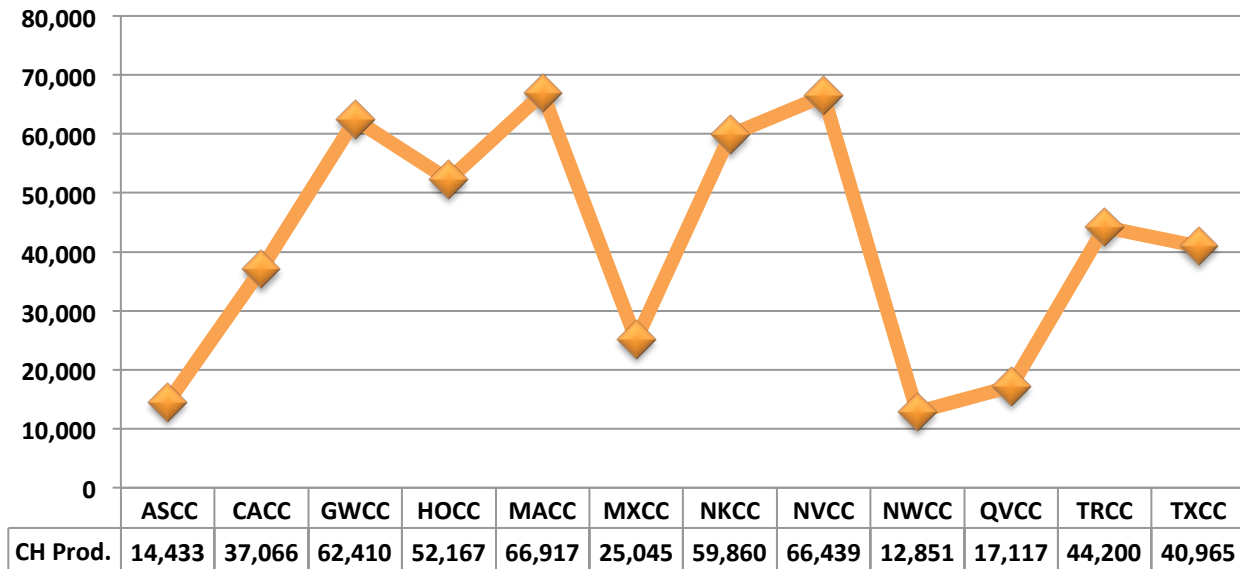
FTE by Community College - Fall 2011
as percentage of Total System FTE (33,298)



*Please note: All college information is as of the freeze date in the fall semesters. A **freeze date** is when colleges choose to snapshot the data for that semester and use it for reporting purposes. Freeze dates usually occur after the initial drop/add period of classes is over. However, every community college has the autonomy to determine when the freeze data is for their college.*

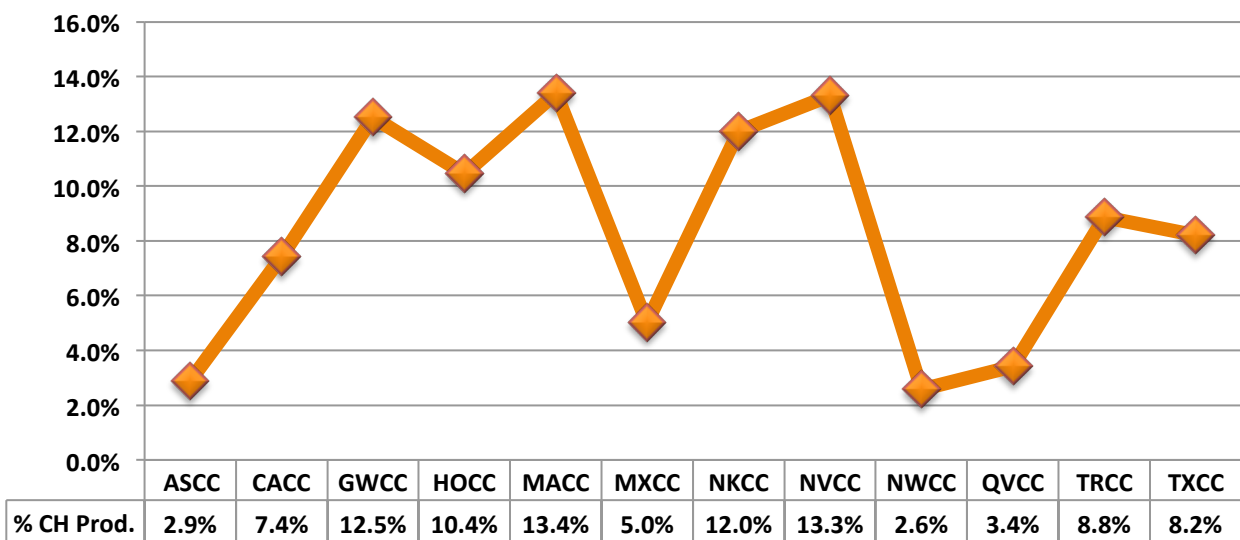
Credit Hour Production by Community College

Credit Hour Production by College - Fall 2011



The total credit hour production for HCC is 52,167 which consists of 10.4% of the total credit hours produced throughout the System.

Credit Hour Production by College - Fall 2011 as percentage of System Credit Hour Production (499,469)

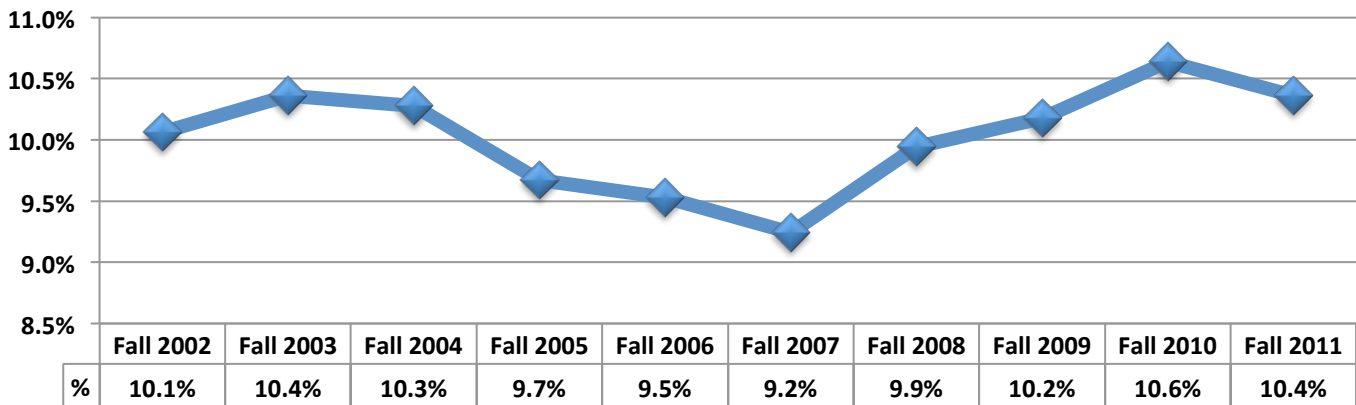


*Please note: All college information is as of the freeze date in the fall semesters. A **freeze date** is when colleges choose to snapshot the data for that semester and use it for reporting purposes. Freeze dates usually occur after the initial drop/add period of classes is over. However, every community college has the autonomy to determine when the freeze data is for their college.*

Housatonic Community College Headcount Enrollment

Fall 2002 to 2011

Housatonic Community College Headcount Enrollment
as percentage of total Community College Enrollment, fall 2002 to fall 2011



HCC has enrolled approximately 10% of the community colleges enrolled throughout the State. Enrollment percentage has ranged from 9.2% in Fall 2007 to 10.6% in Fall 2010.

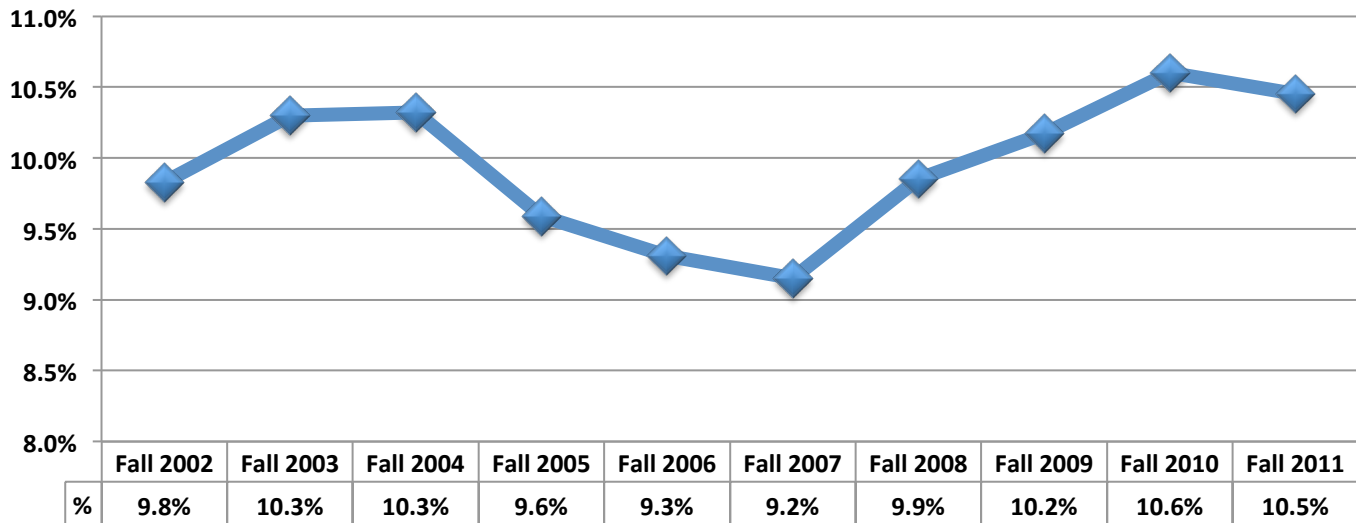
*Please note: All college information is as of the freeze date in the fall semesters. A **freeze date** is when colleges choose to snapshot the data for that semester and use it for reporting purposes. Freeze dates usually occur after the initial drop/add period of classes is over. However, every community college has the autonomy to determine when the freeze data is for their college.*

Housatonic Community College FTE Enrollment

Fall 2002 to 2011

Housatonic Community College - FTE

as percentage of total System FTE, fall 2002 to fall 2011



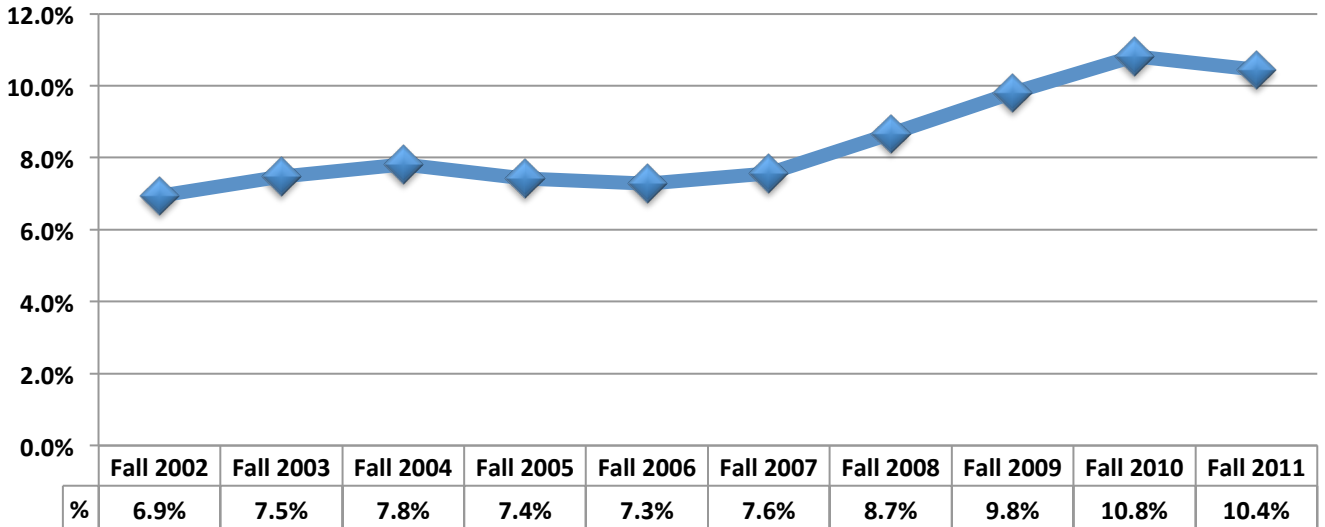
*Please note: All college information is as of the freeze date in the fall semesters. A **freeze date** is when colleges choose to snapshot the data for that semester and use it for reporting purposes. Freeze dates usually occur after the initial drop/add period of classes is over. However, every community college has the autonomy to determine when the freeze data is for their college.*

Housatonic Community College Credit Hour Production

Fall 2002 to 2011

Credit Hours Production

as percentage of System totals, Fall 2002 to Fall 2011



*Please note: All college information is as of the freeze date in the fall semesters. A **freeze date** is when colleges choose to snapshot the data for that semester and use it for reporting purposes. Freeze dates usually occur after the initial drop/add period of classes is over. However, every community college has the autonomy to determine when the freeze data is for their college.*