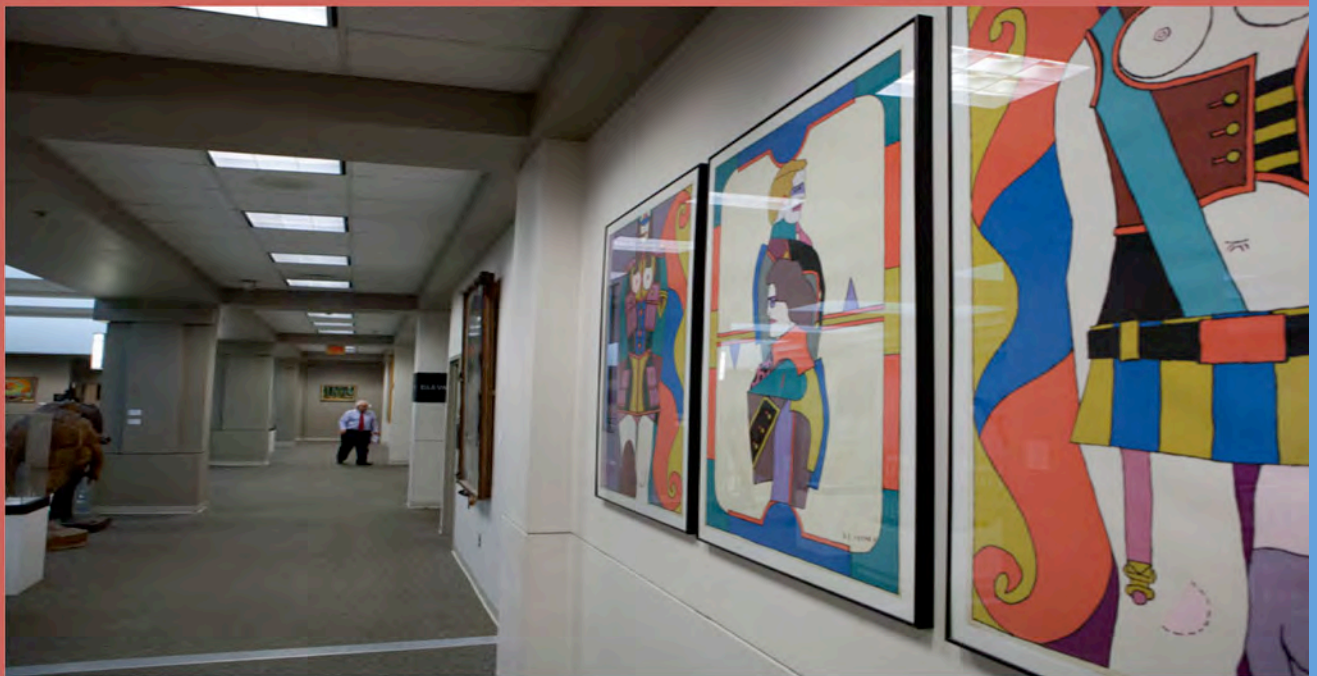


Housatonic Community College

FINAL Enrollment Profile for Fall 2013 Semester



Office of Institutional
Research
Beacon Hall 285

Many thanks to our own HCC Honors student, Alexis Smith, for her editing work on this report.

<i>Freeze Dates</i>		<i>Freeze dates are determined by the College and are a capture of the data at a particular time for the purpose of consistency in reporting. The date usually occurs after the initial drop/add period of classes.</i>
<i>Fall 2004</i>	<i>September 22, 2004</i>	
<i>Fall 2005</i>	<i>September 12, 2005</i>	
<i>Fall 2006</i>	<i>September 12, 2006</i>	
<i>Fall 2007</i>	<i>September 13, 2007</i>	
<i>Fall 2008</i>	<i>September 16, 2008</i>	
<i>Fall 2009</i>	<i>September 8, 2009</i>	
<i>Fall 2010</i>	<i>September 13, 2010</i>	
<i>Fall 2011</i>	<i>September 12, 2011</i>	
<i>Fall 2012</i>	<i>September 14, 2012</i>	
<i>Fall 2013</i>	<i>September 16, 2013 PM</i>	

The above freeze dates are used for the ten year trend graphs on the following page

Table of Contents

Enrollment Summary (Headcount).....	4
Ten Year Trends.....	5
Student Type.....	7
Full-Time/Part-Time Status.....	10
Student Method for Registering.....	12
Seats Distributed by Day and Time.....	13
Distribution of Class Type.....	14
Class Level.....	15
Course Level.....	16
Gender.....	17
Age.....	19
Race/Ethnicity.....	20
Residency.....	23
Advisors.....	26
Program Enrollments.....	27
Program by Student Type.....	36
Program by Developmental Course.....	42
Program by High School Graduates.....	48

HOUSATONIC COMMUNITY COLLEGE

Fall 2013 Enrollment FINAL
Monday, September 16, 2013 PM

	Fall 2013 FREEZE Data	Fall 2012 FREEZE Data	Number of Students	Percentage Difference
Full-Time Students	1,843	2,056	-213	-10.4%
Part-Time Students	3,970	4,041	-71	-1.8%
Total Headcount	5,813	6,097	-284	-4.7%

Credit Hours	48,678	51,883	-3,205	-6.2%
FTE	3,245	3,459	-214	-6.2%

Source: SWRXF03

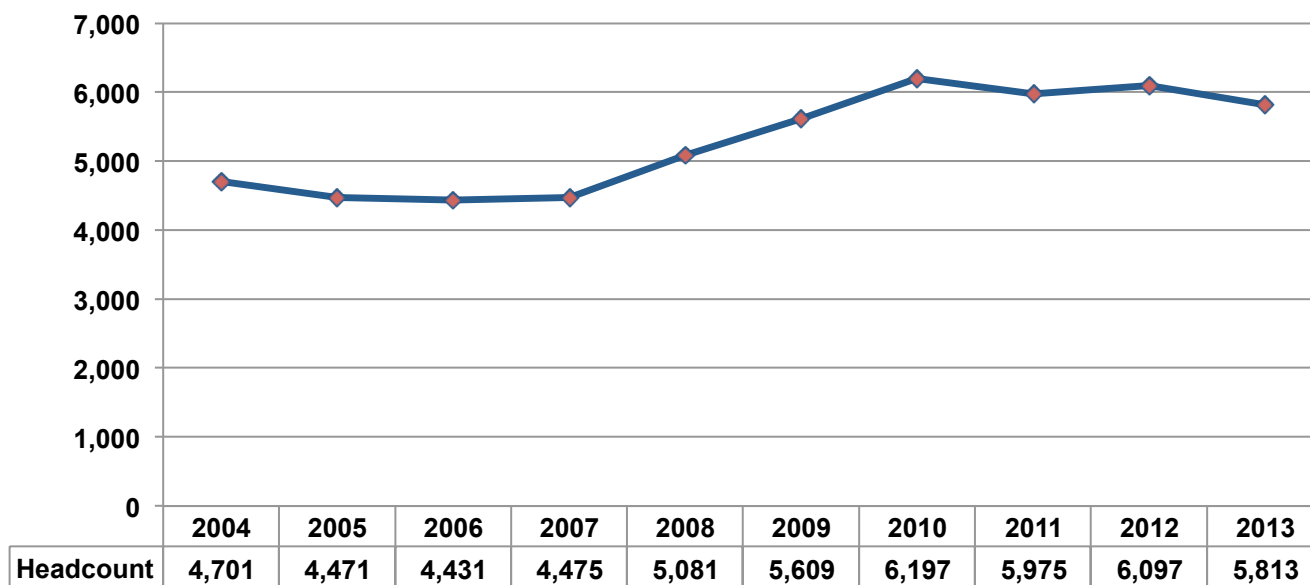
Fall 2013 Faculty

	Full-Time Faculty	Part-Time Faculty	Total Faculty
Faculty Headcount	73	291	364

Source: SWRXIN

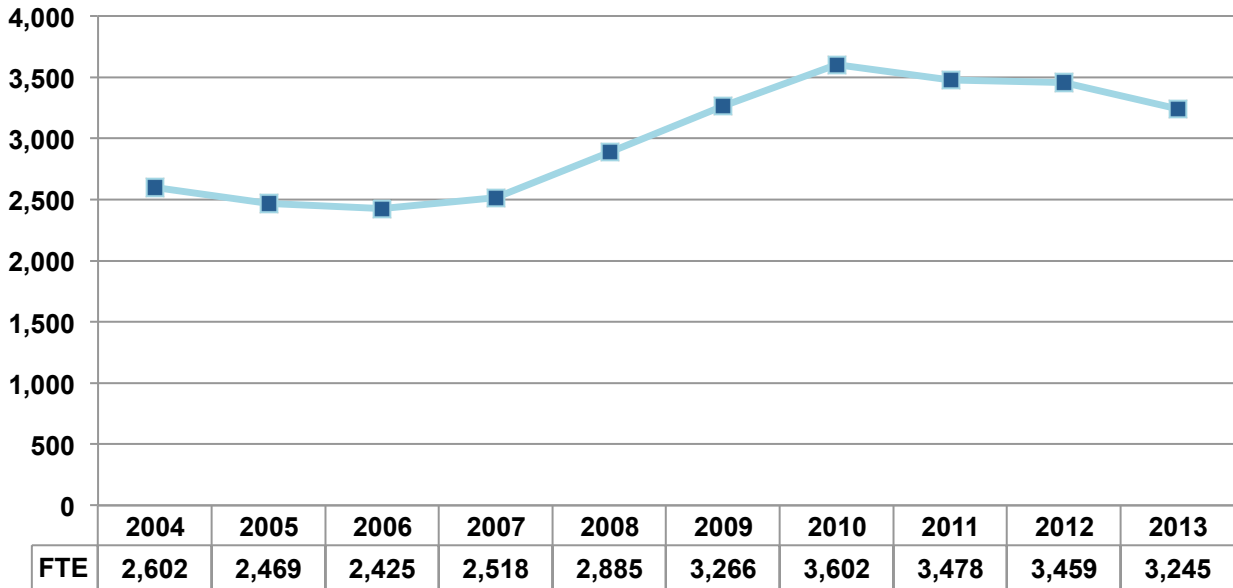
Ten Year Trends – Fall Semesters

Fall Semester Headcounts

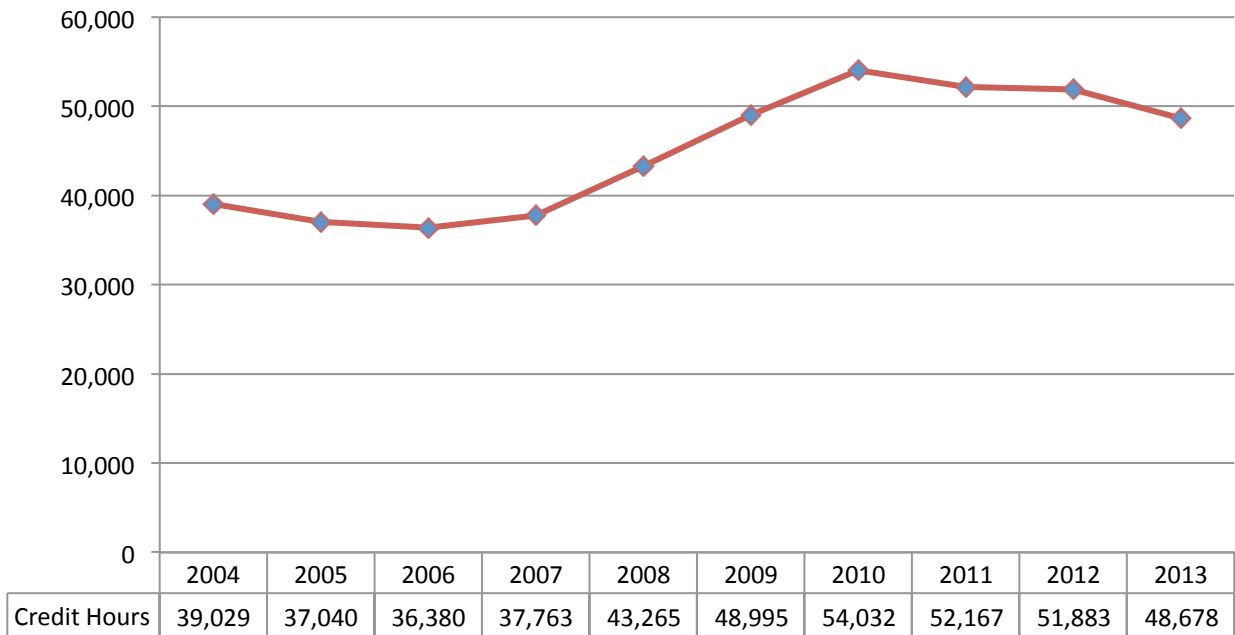


FINAL Enrollment Profile for Fall 2013 Semester

Fall Semesters - Full Time Equivalency (FTE)



Fall Semesters - Credit Hour Production



Student Type

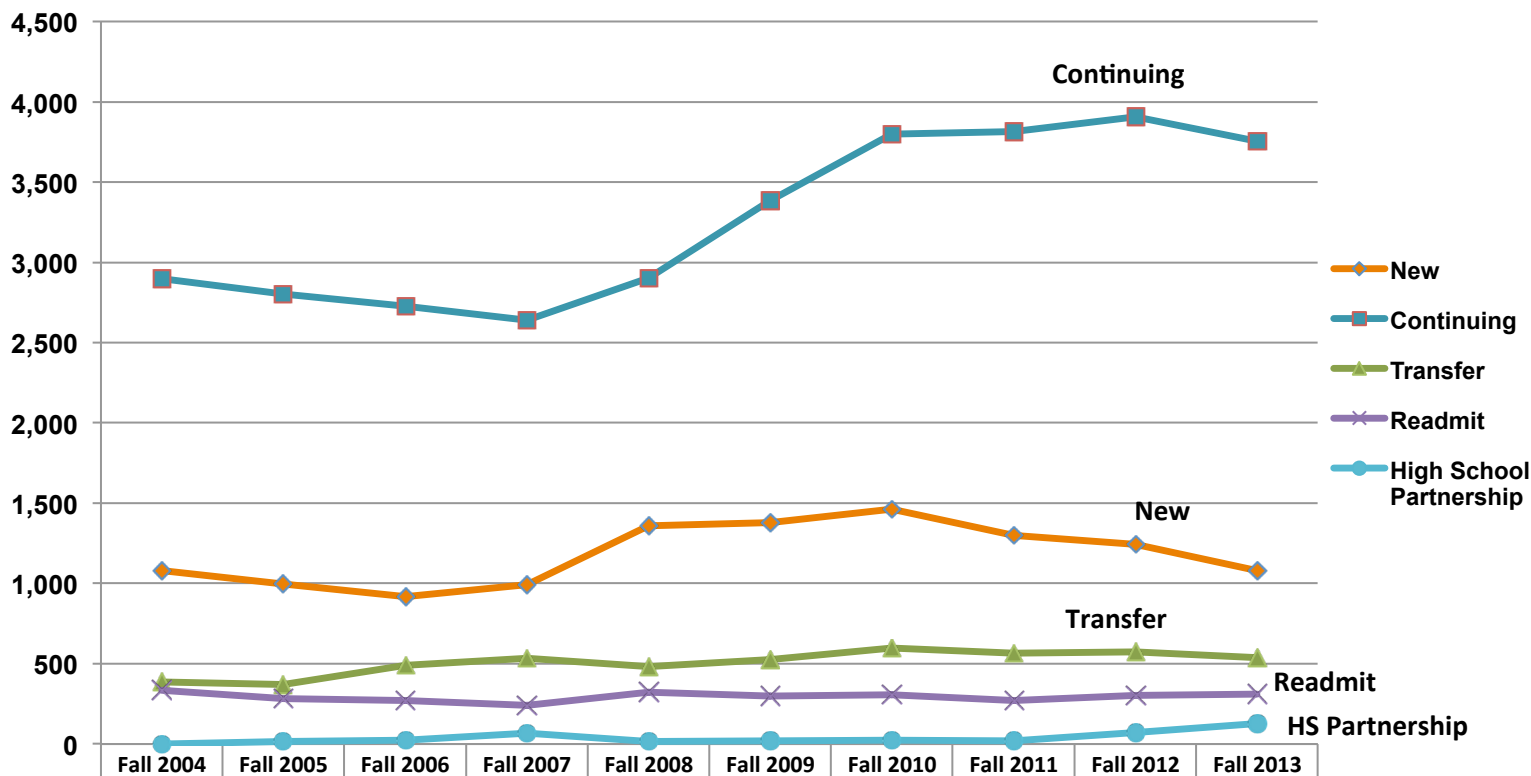
Student Type	Headcount Fall 2013 FINAL				Headcount Fall 2012 FINAL			
	Non-Degree	Degree Seeking	Total #	Total %	Non-Degree	Degree Seeking	Total #	Total %
New Students	84	997	1,081	18.6%	93	1,152	1,245	20.4%
Continuing Students	125	3,670	3,755	64.6%	135	3,771	3,906	64.1%
Transfer Students	161	377	538	9.3%	141	434	575	9.4%
Re-Admitted Students	29	283	312	5.4%	35	266	301	5.0%
Other	126	1	127	2.2%	68	2	70	1.1%
Total Registered	525	5,288	5,813	100%	472	5,625	6,097	100.0%

Of the 5,813 students who registered for the fall 2013 semester as of the official freeze, the majority of students are continuing students (n=3,670, 64.6%), resulting in a slight decrease from fall 2012. Nineteen percent (n=1,081, 18.6%) of the student body are new students, first time in college. The percentage of students who are non-degree seeking this fall 2013 is 9.3% up from 7.8% of the total student body last fall 2012.

FINAL Enrollment Profile for Fall 2013 Semester

Student Type – Fall Semesters

Below is a chart indicating the enrollment status of HCC students over the last ten years.

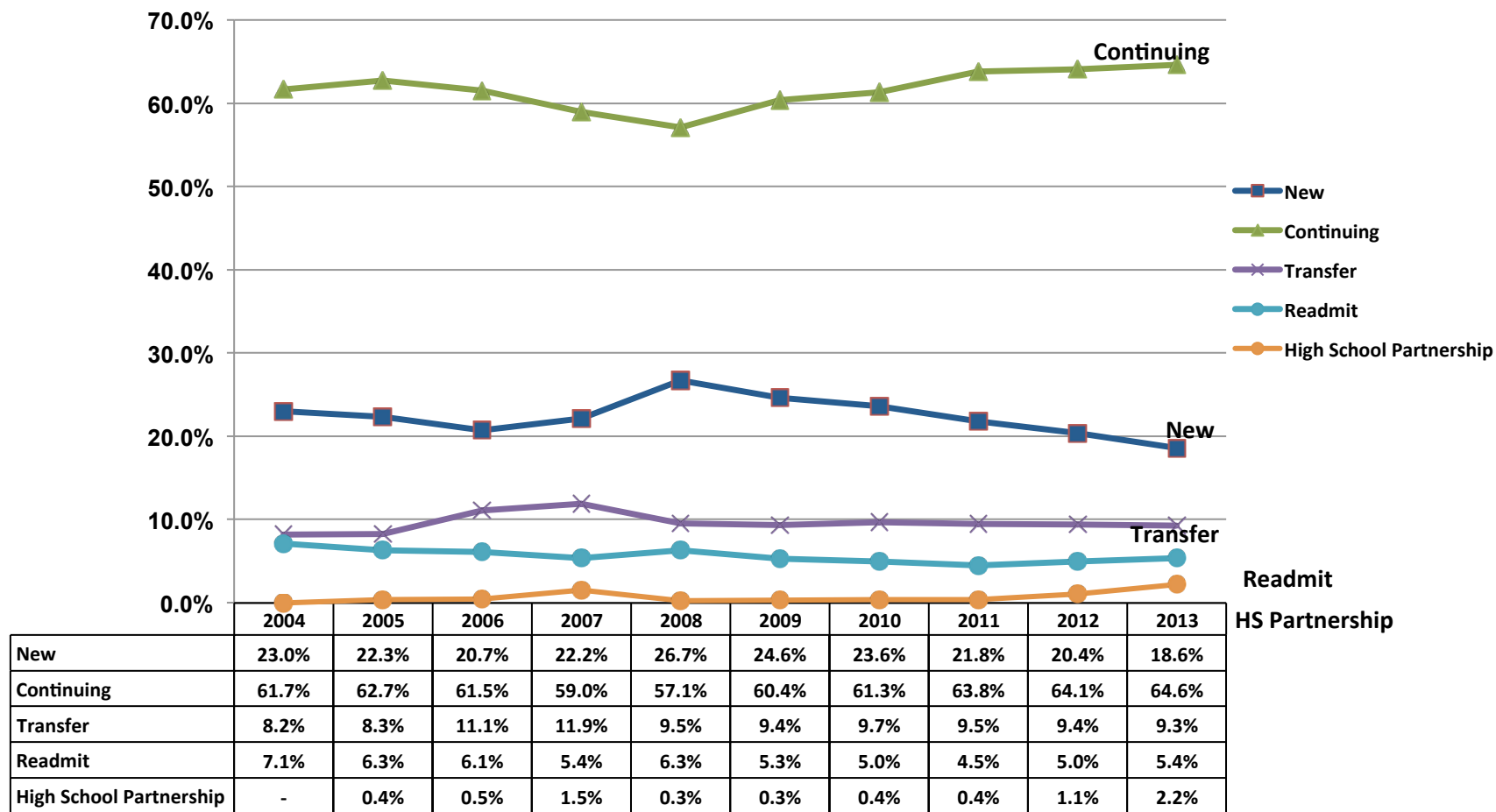


	Fall 2004	Fall 2005	Fall 2006	Fall 2007	Fall 2008	Fall 2009	Fall 2010	Fall 2011	Fall 2012	Fall 2013
New	1,082	998	918	992	1,359	1,380	1,465	1,301	1,245	1,081
Continuing	2,899	2,804	2,727	2,640	2,901	3,386	3,801	3,815	3,906	3,755
Transfer	386	369	492	533	484	526	599	568	575	538
Readmit	334	283	272	241	322	299	308	270	301	312
High School Partnership	-	17	22	69	15	18	24	21	70	127

FINAL Enrollment Profile for Fall 2013 Semester

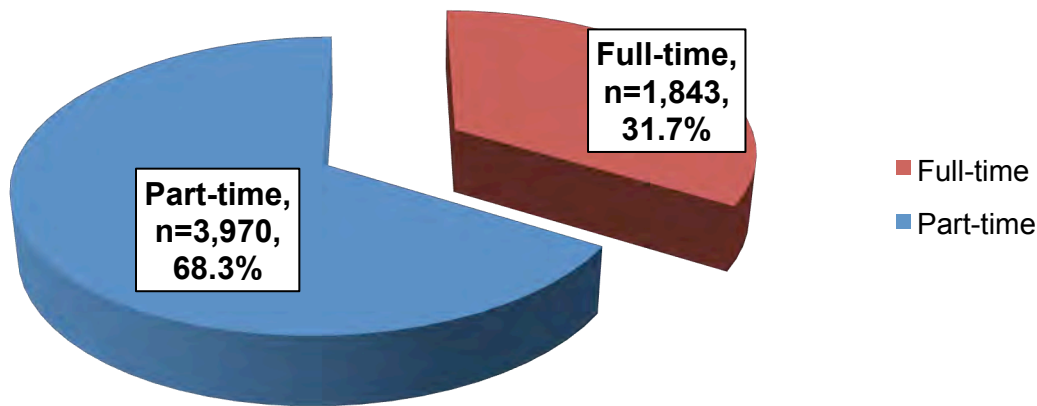
Student Type – Fall Semesters

Percentage of Total Enrollment



The decrease in enrollment this fall shows that we had a slight increase in the percentage of continuing and readmit students and a decrease in the percentage of new and transfer students. High school partnership students have increased more than ever before as a percentage of the student body.

Full-time and Part-time Status

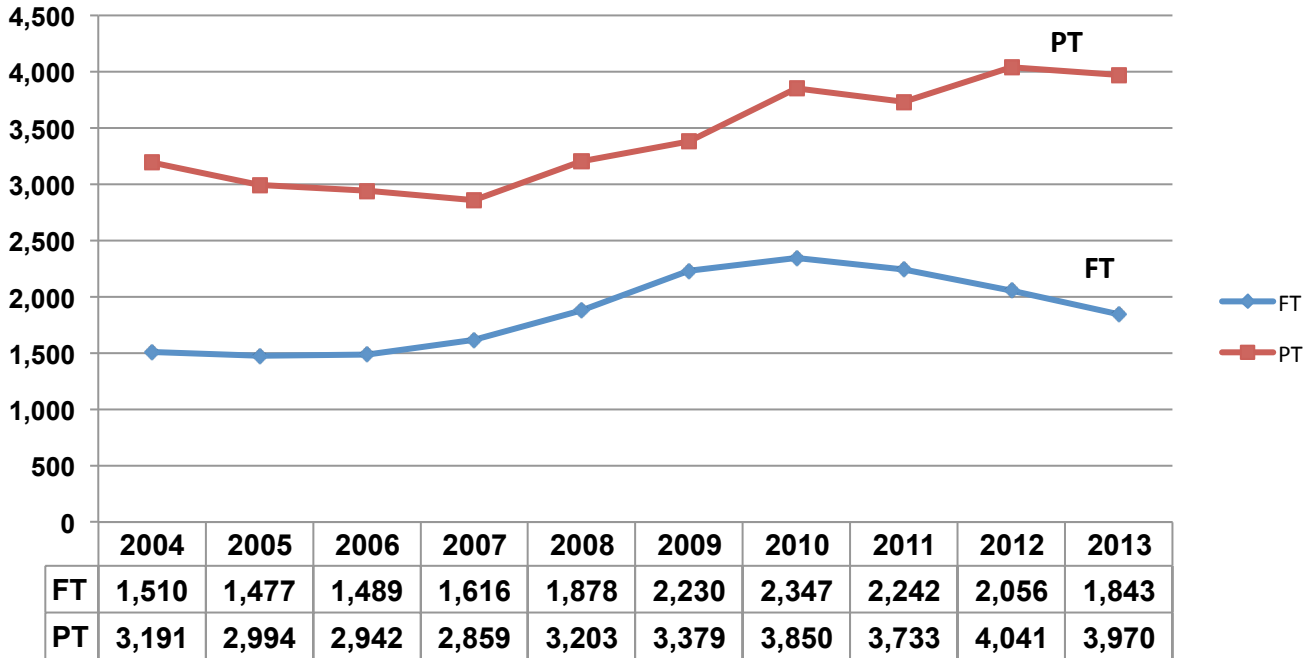


	FINAL Fall 2013	
FT/PT Status	Number	Percentage
Full-Time	1,843	31.7%
Part-Time	3,970	68.3%
Total Students	5,813	100%

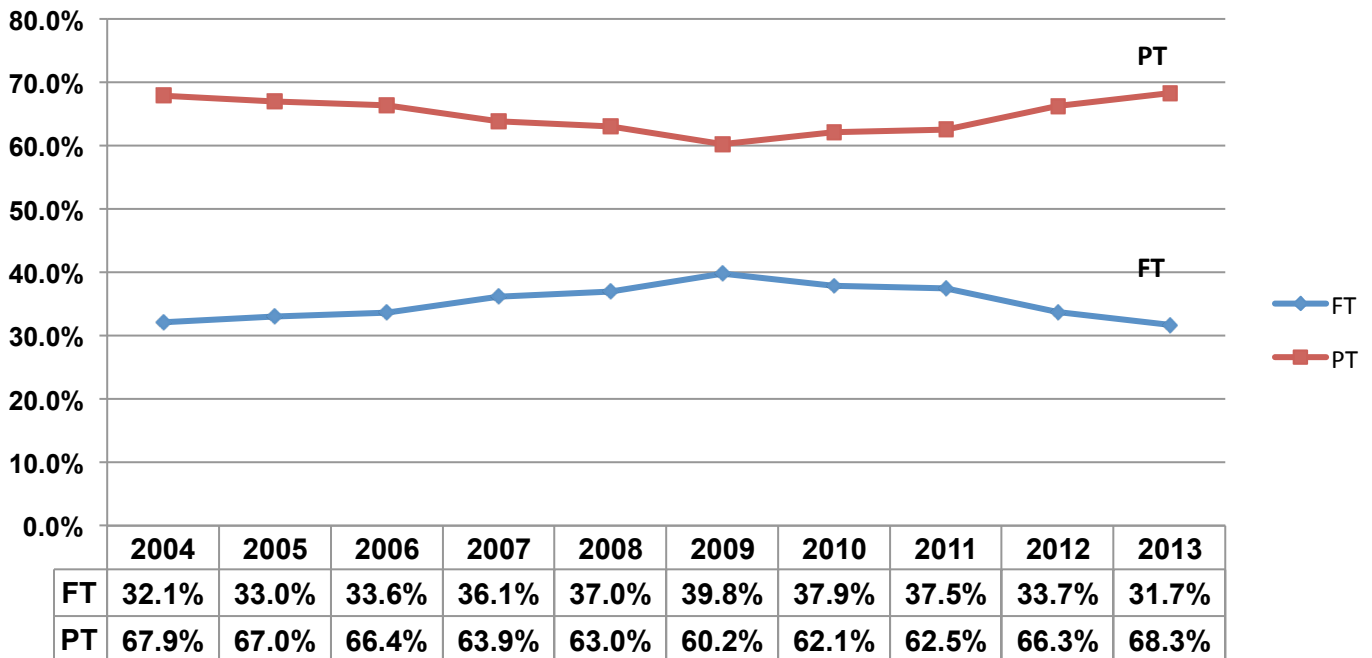
	FINAL Fall 2012	
	Number	Percentage
Full-Time	2,056	33.7%
Part-Time	4,041	66.3%
Total Students	6,097	100.0%

The percentage of enrollment status (full and part time) for the fall 2013 semester is similar to the enrollment status of the final figures for fall 2012 semester although more of a percentage of the student body is part-time over last fall semester

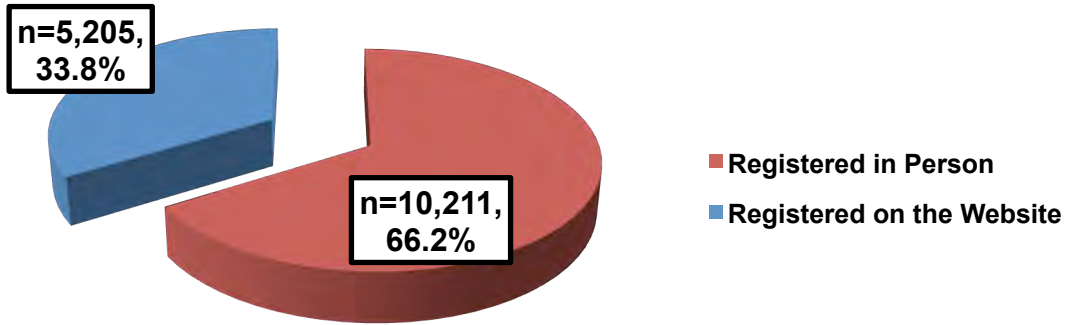
Full-Time/Part-Time Status – Fall Semesters



Full-Time/Part-Time Status – Fall Semesters
Percentage of Total Enrollment



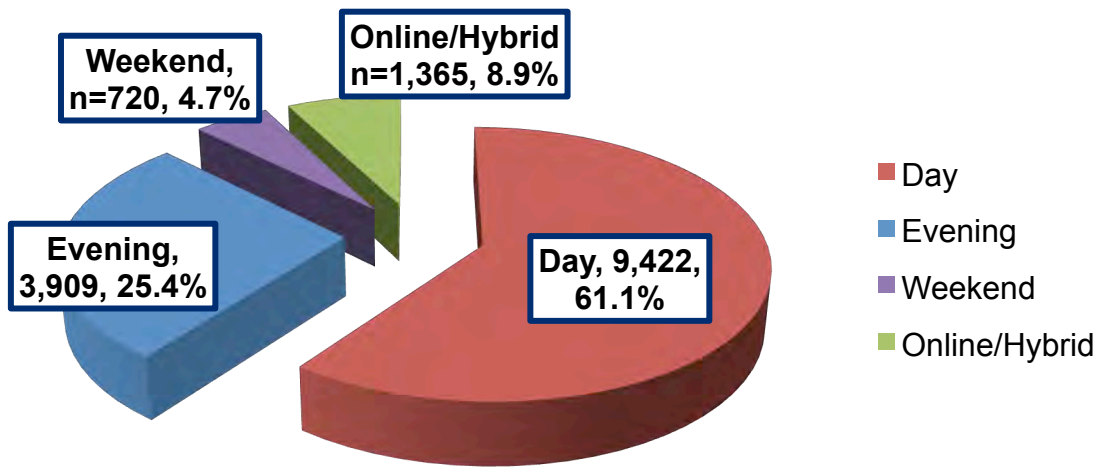
Fall 2013 Student Method of Registering for Class



Registration Status	Final (Seats) Fall '13		Final (Seats) Fall '12	
	Seats	Percentage	Seats	Percentage
Seats Registered in Person	10,211	66.2%	10,218	61.8%
Seats Registered on the Web	5,205	33.8%	6,309	38.2%
Total	15,416	100%	16,527	100.0%

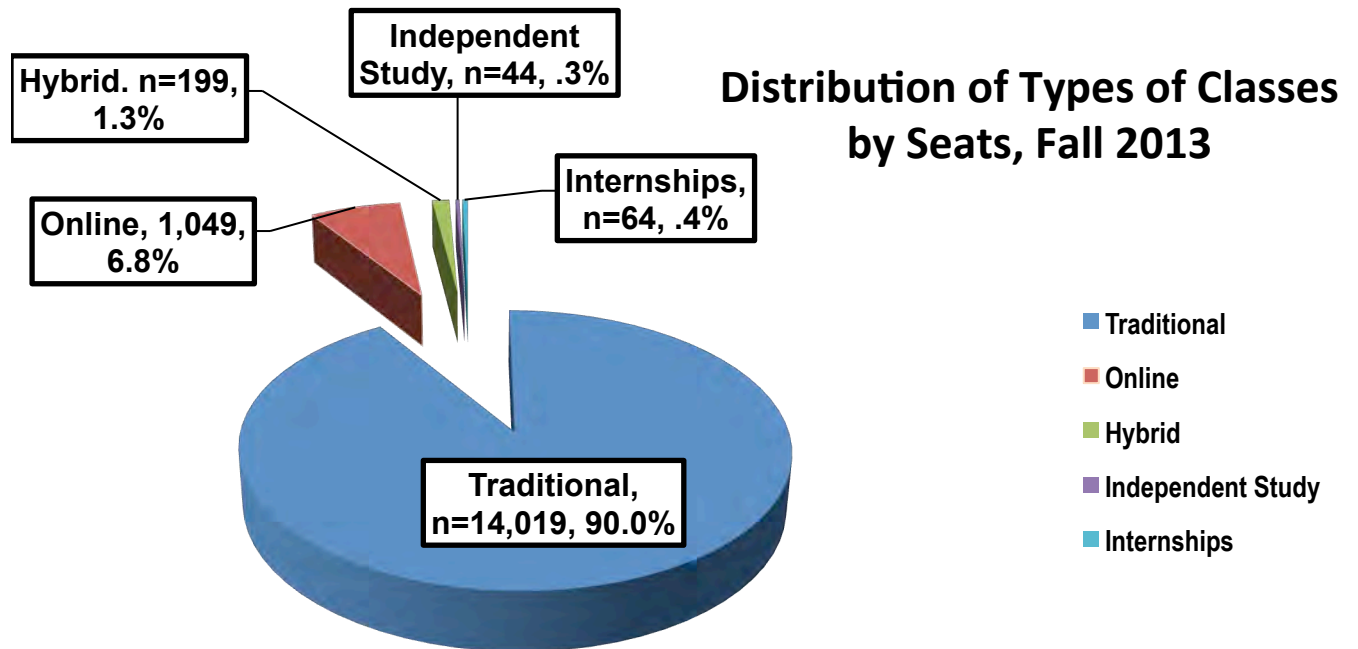
Students continue to primarily register for their classes in person (66.2%).

Seats Distributed by Day and Time



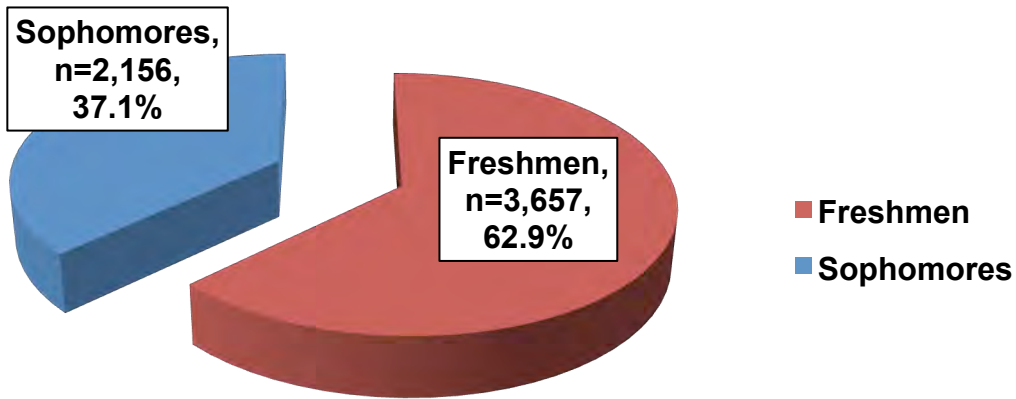
Distribution of Class Days and Times	Fall 2013		Fall 2012		Difference	
	# of Seats	% of Seats	# of Seats	% of Seats	# of Seats	% of Seats
Day Student Seats (classes beginning M-F 8:00 am to 4 pm)	9,422	61.1%	9,949	60.3%	-527	-5.3%
Evening Student Seats (classes beginning M-TH at 4 p.m. and later)	3,909	25.4%	4,487	27.1%	-578	-12.9%
Weekend Student Seats (classes beginning Friday 4 pm or later, anytime Saturday or Sunday)	720	4.7%	834	5.0%	-114	-13.7%
Online/Hybrid	1,365	8.9%	1,257	7.6%	108	8.6%
Total Seats	15,416	100%	16,527	100%	-1,111	-6.7%

Note: Unduplicated # students are for the category only. Students may take courses in multiple categories.



Instructional Method (Seats)				
	Fall 2013 FINAL		Fall 2012 FINAL	
Traditional	14,019	90.9%	15,204	92%
Online	1,049	6.8%	1,013	6.1%
Hybrid	199	1.3%	188	1.1%
Independent Study	44	.3%	14	.1%
Internships	64	.4%	108	.7%
Total Seats Registered	15,416	100%	16,527	100.0%

Fall 2013 Student Class Level

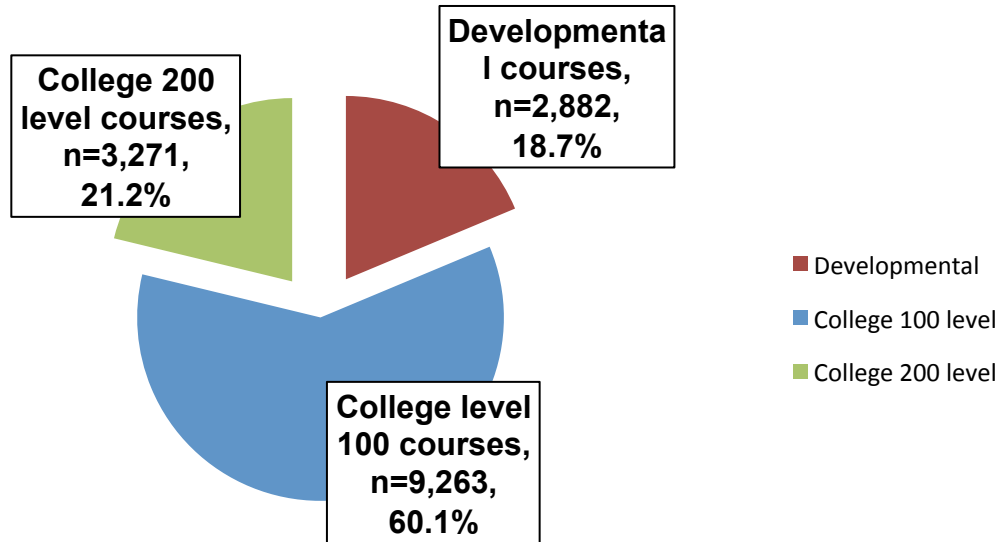


FINAL Fall 2013		
Class Level	Number	Percentage
Freshmen	3,657	62.9%
Sophomores	2,156	37.1%
Total Students	5,813	100%

FINAL Fall 2012	
Number	Percentage
3,875	63.6%
2,222	36.4%
6,097	100.0%

Freshmen are defined as accumulating 0-32 GPA credits; sophomores are defined as earning 33 or more GPA credits.

Fall 2013 Student Course Level by Seats



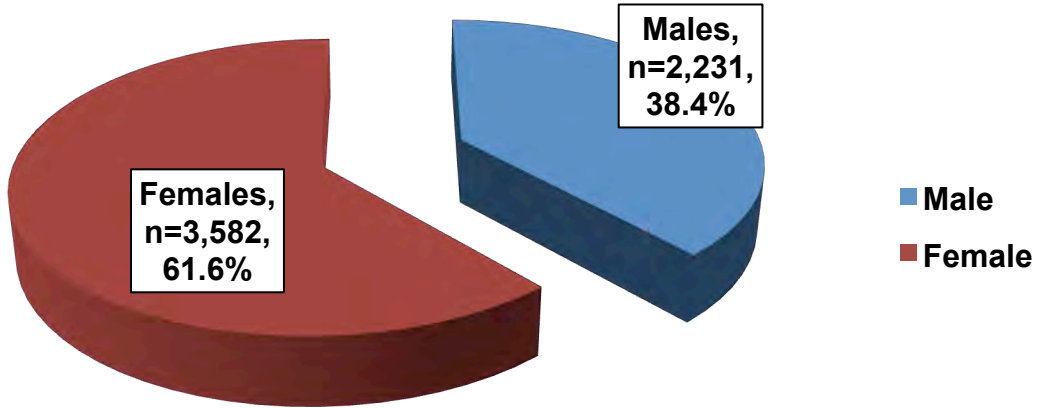
Seats	FINAL Fall 2013	
Course Level	Number	Percentage
Developmental	2,882	18.7%
College 100	9,263	60.1%
College 200	3,271	21.2%
Total Students	15,416	100%

Seats - FINAL Fall 2012	
Number	Percentage
3,287	20.0%
9,854	59.8%
3,386	20.2%
16,527	100.0%

Students Taking # of Courses	# of students	% of students
1 course	1,296	22.3%
2 courses	1,621	27.9%
3 courses	1,099	18.9%
4 courses	1,469	25.3%
5 courses	271	4.7%
6 courses	32	.6%
7 courses	1	.0%
8 courses	24	.4%
Total	5,813	100%

Average Number of Classes a Student Takes in Fall 2013 semester is 2.66 Classes

Fall 2013 Student Gender



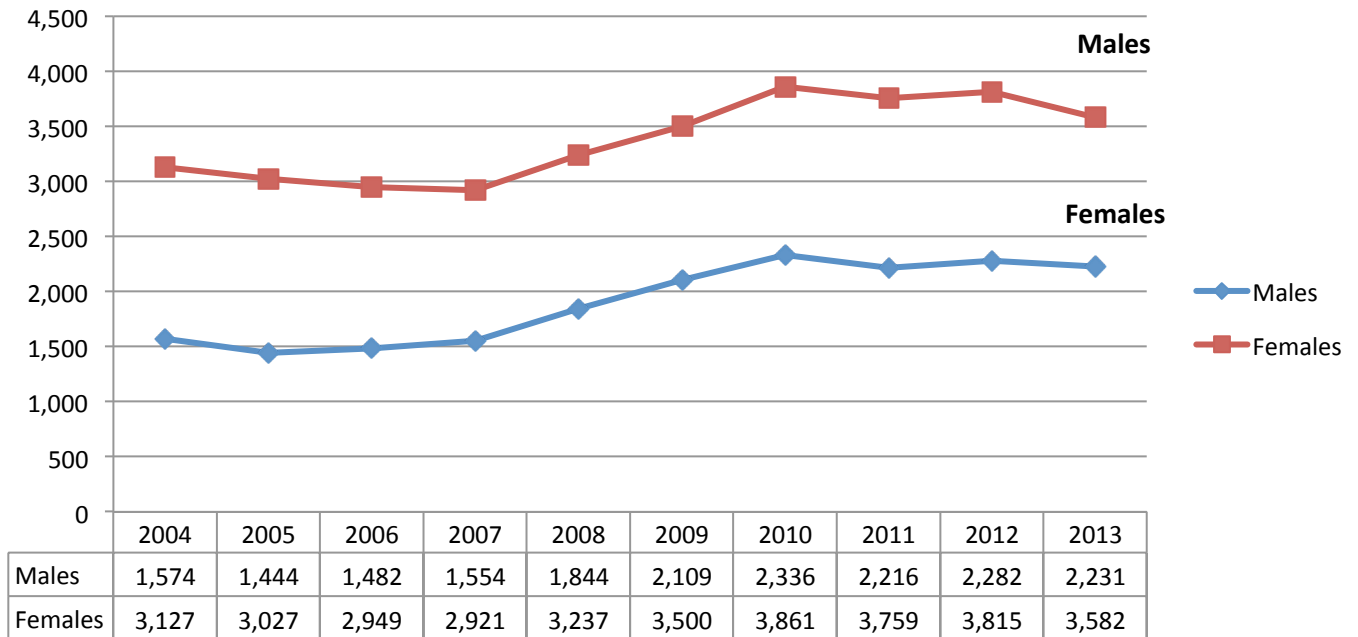
	FINAL Fall 2013	
Gender	Number	Percentage
Male	2,231	38.4%
Female	3,582	61.6%
Total Students	5,813	100%

	FINAL Fall 2012	
	Number	Percentage
Male	2,282	37.4%
Female	3,815	62.6%
Total Students	6,097	100.0%

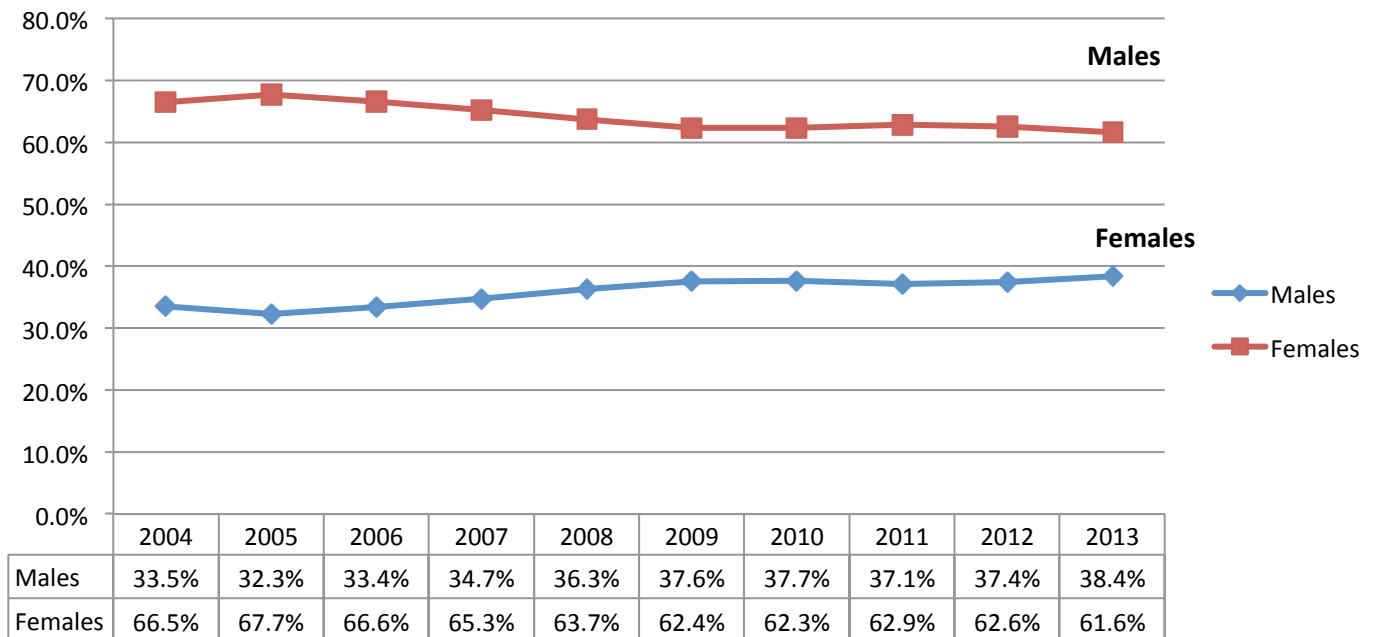
The majority of students who have enrolled this fall semester are female (n=3,582, 61.6%).

FINAL Enrollment Profile for Fall 2013 Semester

Gender - Fall Semesters- Headcount



Gender – Fall Semesters Percentage of Total Enrollment

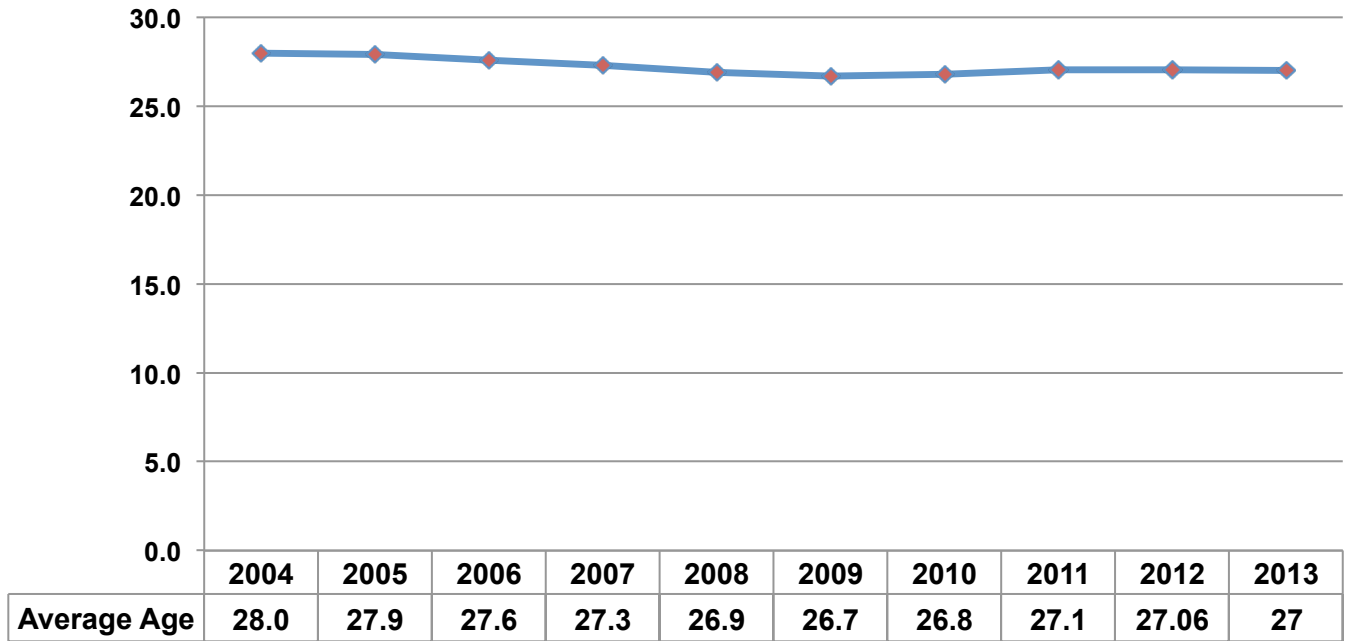


Fall 2013 Student Age

Final Fall 2013	
Age	
Mean	27
Median	23
Mode	19

FINAL Fall 2012	
Age	
Mean	27.06
Median	23
Mode	19

Average Age of Students – Fall Semesters



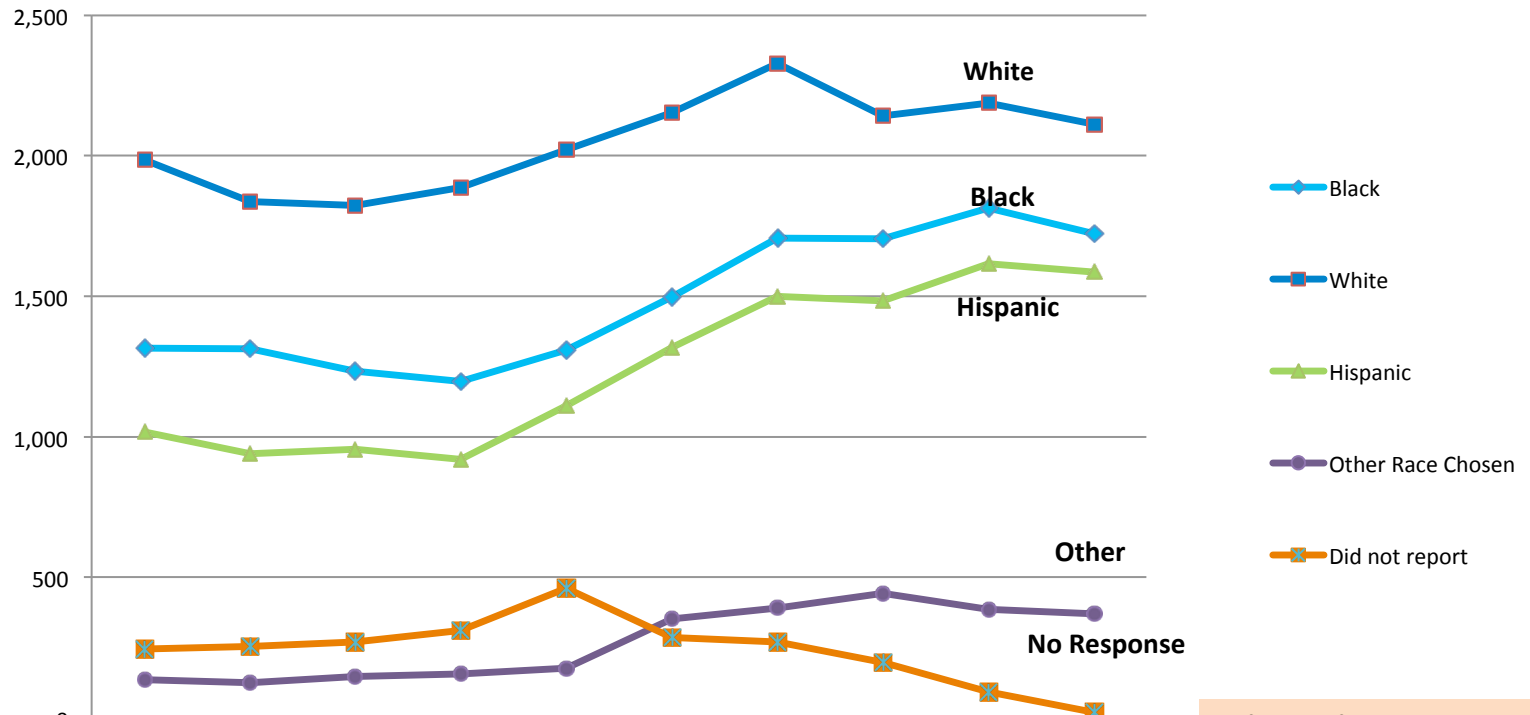
Student Race and Ethnicity

Race/Ethnicity	FINAL Fall 2013		FINAL Fall 2012	
	# of Students	% of Students	# of Students	% of Students
White (10)	2,113	36.3%	2,188	35.9%
Black or African American (20)	1,723	29.6%	1,815	29.8%
Hispanic (2)	1,586	27.3%	1,615	26.5%
Asian (45)	206	3.5%	199	3.3%
American Indian/Alaskan Native (50)	10	.2%	9	.1%
Native Hawaiian or Pacific Islander (80)	8	.1%	10	.2%
Other Race (90)	22	.4%	106	1.7%
Multi Races (MULTI)	125	2.2%	62	1.0%
Choose Not to Respond (60) & No Response (NR)	20	.4%	93	1.5%
Total Students	5,813	100%	6,097	100.0%

The distribution percentage of students' race/ethnicity registered for fall 2013 is very similar to the final fall 2012 enrollment profile. An outreach effort to obtain race/ethnicity information from students has resulted in a decrease in the number of students enrolled with missing information.

FINAL Enrollment Profile for Fall 2012 Semester

Race/Ethnicity of Students – Fall Semesters



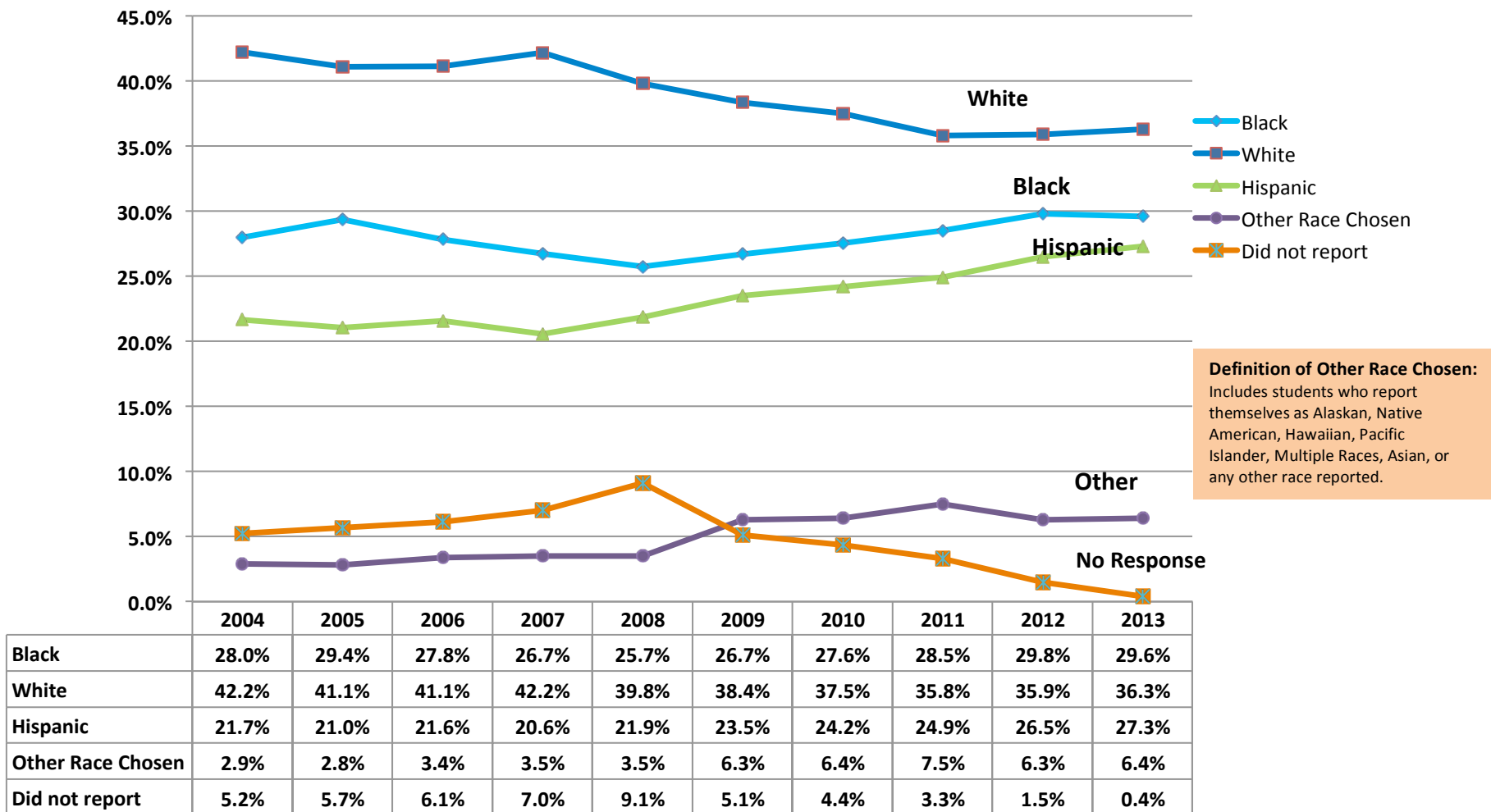
	2004	2005	2006	2007	2008	2009	2010	2011	2012	2013
Black	1,316	1,313	1,233	1,197	1,308	1,498	1,708	1,705	1,815	1,723
White	1,984	1,837	1,822	1,887	2,022	2,152	2,328	2,142	2,188	2,112
Hispanic	1,018	941	955	920	1,111	1,318	1,500	1,485	1,615	1,586
Other Race Chosen	137	126	149	158	177	353	391	445	386	372
Did not report	246	254	272	313	463	288	270	198	93	20

Definition of Other Race Chosen:
Includes students who report themselves as Alaskan, Native American, Hawaiian, Pacific Islander, Multiple Races, Asian, or any other race reported.

FINAL Enrollment Profile for Fall 2012 Semester

Race/Ethnicity of Students – Fall Semesters

Percentage of Total Enrollment



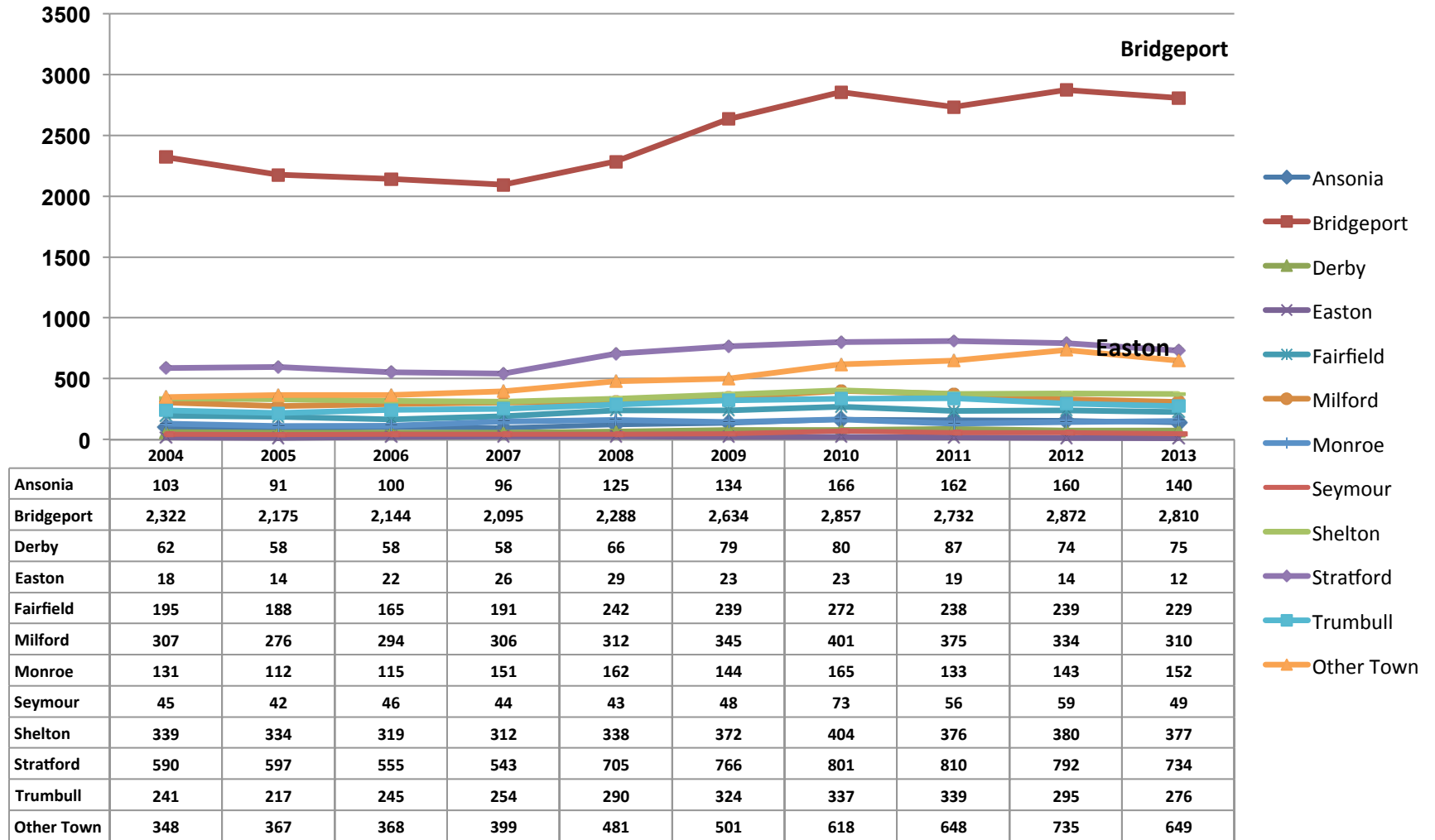
Student Residency

Student Residency	Fall 2013		Fall 2012	
	Count	% of enrollment	Count	% of enrollment
Ansonia	140	2.4%	160	2.6%
Bridgeport	2,810	48.3%	2,872	47.1%
Derby	75	1.3%	74	1.2%
Easton	12	.2%	14	.2%
Fairfield	229	3.9%	239	3.9%
Milford	310	5.3%	334	5.5%
Monroe	152	2.6%	143	2.3%
Seymour	49	.8%	59	1.0%
Shelton	377	6.5%	380	6.2%
Stratford	734	12.6%	792	13.0%
Trumbull	276	4.7%	295	4.8%
Total Students in Service Area	5,164	88.8%	5,362	87.9%
Students Residing in Towns Not in Service Area	649	11.4%	735	12.1%
Total	5,813	100%	6,097	100.0%

The numbers above reflect the current residency of the entire student body. It does not reflect the recruitment efforts of traditional age college students and should not be analyzed as such.

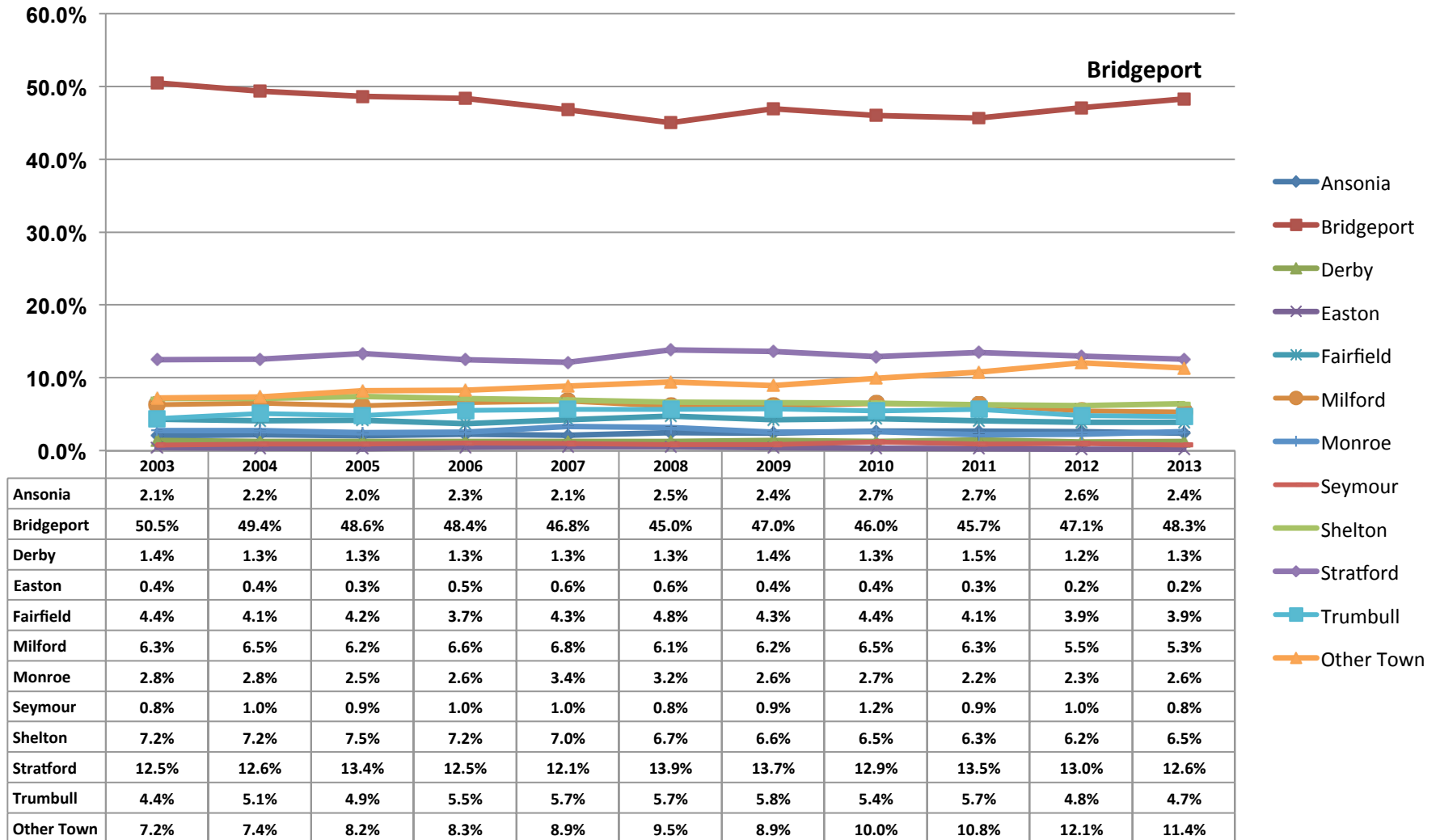
FINAL Enrollment Profile for Fall 2013 Semester

Headcount Enrollment by Town – Fall Semesters



FINAL Enrollment Profile for Fall 2013 Semester

Headcount Enrollment by Town Percentage of Enrollment



FINAL Enrollment Profile for Fall 2013 Semester

Advisors, Counselors, and Faculty Advisors

Advisor	#	%
Adams, Rebecca	94	1.6
Albaz, Asher	117	2.0
Amico, Michael C	78	1.3
Anzenberger, Joanne	96	1.7
Avant, Robin L	8	.1
Barnes, Sandra	855	14.7
Becker, Edward	90	1.5
Benezra, Theodora	67	1.2
Bloom, Eleanor J	38	.7
Boylan, Kevin M	43	.7
Brown, David E	13	.2
Cahill-Lamboley, Maureen	60	1.0
Cercone, Kathleen	94	1.6
Chance, Edwena S	99	1.7
Clark, Mary K	534	9.2
Coba-Loh, Claudine J	28	.5
Cohen, Michele	78	1.3
Conway, Janice	13	.2
Dawson, Asantewa	38	.7
Empric, Scott	66	1.1
Favret, John L	101	1.7
Gallagher, Joan F	141	2.4
Galluzzi, Jennifer	4	.1
Griffin, William R	6	.1
Grossman, William G	46	.8
Gugger, Michael	25	.4
Hart, Stephanie A	39	.7
Hughes, Kirk	49	.8
Keane, Edward C	136	2.3
Keenan, Paul J	112	1.9
Kocay, Michelle	52	.9
Koch, David A	60	1.0
Kozek, Teresa A	65	1.1
Krill, Vernon J	187	3.2
Lanci, Janet M	90	1.5
Langella, Lynne P	2	.0

Advisor	#	%
Leach, Mark	79	1.4
Lloyd, Joan	79	1.4
Mandel, Michael R	129	2.2
Mannion, Samantha	183	3.1
Mark, Steven W	77	1.3
Mellouk, Driss	38	.7
Meyrick, Charles W	75	1.3
Micinilio, Kathleen	33	.6
Monroe, Susan M	40	.7
Nelson, Robert E	77	1.3
Noe, Laurie	148	2.5
Ortiz, Jamilet R	48	.8
Pappantoniou, Antonios	11	.2
Philips, Marina	103	1.8
Pinto, Andrew N	68	1.2
Pirog, Pamela J	148	2.5
Ravanshad, Farshad	44	.8
Reed, Michele	52	.9
Richards, Barbara E	76	1.3
Rizzi, Richard	60	1.0
Roche, Maria S	29	.5
Rondinone, Tonya H	37	.6
Rose, Eddie B	26	.4
Ryder, Robert	115	2.0
Samberg, Rebecca	19	.3
Schissler, Henry	7	.1
Sheehan, Geoffrey T	38	.7
Smith, Karyn L	19	.3
Sommers, Irene J	8	.1
Sopchak, John C	59	1.0
Steeves, Elizabeth	78	1.3
Szobota, Heidi W	3	.1
Toedt, Kathleen	16	.3
Tomey, Shelley S	73	1.3
Valovcin, Mary Ann	56	1.0
Zajdel, Shirley	2	.0
Zamparo, Janet	2	.0
Zander, Kyle	30	.5
Previous Faculty	4	.1
Total	5,813	100%

FINAL Enrollment Profile for Fall 2013 Semester

SPRING 2013 STUDENTS WHO ARE ENROLLED FOR THE FALL 2013 SEMESTER AT HCC

PRIMARY PROGRAM of STUDY	Spring 2013 enrollment	2012-13 Graduates not registered for Fall 2013	Eligible Cohort from Spring 2013	as of September 16, 2013 FREEZE	
				Fall 2013 Registered Students	% Enrolled from Spring 2013 Eligible cohort
Adv. English proficiency	3	1	2	2	100.0%
Occupational Therapy and Pre-OTA	51	14	37	25	67.6%
Accounting	199	21	178	118	66.3%
Criminal Justice	473	23	450	292	64.9%
Arts	169	13	156	101	64.7%
Math and Science	69	1	68	44	64.7%
Pathway to Teaching	28	0	28	18	64.3%
Behavioral Sciences	197	17	180	114	63.3%
Engineering Science	109	4	105	64	61.0%
Business	731	37	694	410	59.1%
Human Services	306	33	273	160	58.6%
General Studies	2,017	78	1,939	1,135	58.5%
PTA and Pre-PTA	64	1	63	36	57.1%
Theater	31	3	28	16	57.1%
Early Childhood Education	317	16	301	171	56.8%
Journalism	77	3	74	42	56.8%
Pre-Nursing	686	19	667	367	55.0%
Business Office Technology	17	0	17	8	47.1%
Non Major	399	0	399	101	25.3%
Manufacturing	25	17	8	2	25.0%
Total Students	5,968	301	5,667	3,226	56.9%

Accounting: EA03, EA06, EA61, EJ05; Arts: EB20, EB33, EB59, EB61, EB70, EJ91; ARTS: EB20, EB33, EB70, EJ91, EB59; Art: EB20, EB33, EB30, EB59, EB70, EJ91, EK07, Behavioral Sciences: EA92, Business: EA47, EA56, EA60, EA65, EA67, EA89, EA55, EA56, EA57, EA58, EA63, EF08, EK03, EK05, EJ28, EB38, EB60, EJ01, EJ02, EJ04, EJ07, EJ10, EJ27, EJ97, EJ98, EK07; Business Office Technology: EA92, EB18, EJ09, EJ60, EJ70; Criminal Justice: EB13, EJ06, EJ61, EJ62, EJ63, EK01; Early Childhood Education: EA95, EB14, EJ07, EJ73, EJ89, EJ92; Engineering Science: EA08, EA30, EA90, EB16, EB47, EF06, EF11, EF12, EN12; General Studies: EB30, EX97; Health Occupations: EA23, EA77, EA79, EK02, EK55; Human Services: EB35, EB45, EF03, EJ67, EJ68, EJ69, EJ71, EJ72, EJ93; Journalism: EB46; Non-Degree: EZ98, EZ99; occupational Therapy, Pre-OTA, Pre-PTA and Pre Nursing: are coded as a cohort; Pathway to teaching: EC35; Science and Math: EA05, EA97, EA98, EB42, EB48, EC35. Theater: EB61; Pre-Nursing Students are tagged in Banner. MANUFACTURING majors are not necessarily tagged in banner.

FINAL Enrollment Profile for Fall 2013 Semester

Fall 2013 Program Enrollments as Percentage of Semester Enrollment														
<i>#=Number of students enrolled, %=program enrollment as a percent of total enrollments</i>														
Program & Group	Major Description	Code	2009		2010		2011		2012		2013		% Difference within Major last year	
			#	%	#	%	#	%	#	%	#	%	#	%
Accounting	Accounting Small Business Option	EA61	-	-	-	-	7	0.1%	13	0.2%	11	0.2%	-2	-15.4%
	Accounting	EA03	183	3.3%	197	3.2%	179	3.0%	193	3.2%	188	3.2%	-5	-2.6%
	Accounting Assistant Option - CERT - phasing out per BOR 070913	EA06	5	0.1%	9	0.1%	4	0.1%	2	0.0%	1	0.0%	-1	-50.0%
	Accounting - CERT-phasing out per BOR 070913	EJ05	10	0.2%	5	0.1%	4	0.1%	3	0.0%	-	-	-	-
	Accounting for Small Business - CERT - terminated 3/21/13 no degrees granted after 7/1/14	EJ80	-	-	-	-	-	-	4	0.1%	1	0.0%	-3	-75.0%
Fall Enrl	ACCOUNTING TOTAL		198	3.5%	211	3.4%	194	3.2%	215	3.5%	201	3.5%	-14	-6.5%
Arts	Fine Arts: Art	EB20	51	0.9%	67	1.1%	60	1.0%	48	0.8%	52	0.9%	4	8.3%
	Graphic Design	EB33	97	1.7%	98	1.6%	90	1.5%	86	1.4%	83	1.4%	-3	-3.5%
	Graphic Design: Multi Media	EB70	3	0.1%	15	0.2%	32	0.5%	29	0.5%	27	0.5%	-2	-6.9%
	Web Design Graphics-CERT	EK06	-	-	-	-	-	-	2	0.0%	2	0.0%	0	0.0%
	Graphic Design - CERT	EJ91	8	0.1%	3	0.0%	7	0.1%	4	0.1%	1	0.0%	-3	-75.0%
	Graphic Design: Comp Graphics - not recognized by BOR	EB59	29	0.5%	15	0.2%	4	0.1%	4	0.1%	2	0.0%	-2	-50.0%
Fall Enrl	ARTS TOTAL		188	3.4%	198	3.2%	193	3.2%	173	2.8%	167	2.9%	-6	-3.5%

FINAL Enrollment Profile for Fall 2013 Semester

Fall 2013 Program Enrollments as Percentage of Semester Enrollment (continued)
#=Number of students enrolled, %=program enrollment as a percent of total enrollments

Program & Group	Major Description	Code	2009		2010		2011		2012		2013		% Difference within Major last year	
			#	%	#	%	#	%	#	%	#	%	#	%
Business Admin.	Banking	EF08	8	0.1%	9	0.1%	7	0.1%	7	0.1%	5	0.1%	-2	-28.6%
	Business Administration: Customer Service/Marketing	EB55	40	0.7%	31	0.5%	30	0.5%	24	0.4%	30	0.5%	6	25.0%
	Business Administration: Finance	EA56	37	0.7%	51	0.8%	35	0.6%	34	0.6%	45	0.8%	11	32.4%
	Business Administration: General	EA67	254	4.5%	275	4.4%	241	4.0%	252	4.1%	241	4.1%	-11	-4.4%
	Business Administration: Global Business	EA65	9	0.2%	20	0.3%	17	0.3%	20	0.3%	9	0.2%	-11	-55.0%
	Business Administration: Human Resource Management	EB56	22	0.4%	24	0.4%	21	0.4%	28	0.5%	29	0.5%	1	3.6%
	Business Administration: Management	EA60	102	1.8%	94	1.5%	112	1.9%	100	1.6%	94	1.6%	-6	-6.0%
	Business Administration: Small Bus Management	EA89	60	1.1%	54	0.9%	54	0.9%	64	1.0%	58	1.0%	-6	-9.4%
	CIS Web Development	EB63	-	-	-	-	1	0.0%	4	0.1%	8	0.1%	4	100.0%
	Small Business/Entrp Management - CERT	EK05	1	0.0%	-	-	3	0.1%	8	0.1%	9	0.2%	1	12.5%
	CIS: Business Information Technology	EB62	-	-	-	-	-	-	3	0.0%	5	0.1%	2	66.7%
	Retail Banking-CERT- not recognized by BOR	EK04	-	-	1	0.0%	-	0.0%	2	0.0%	-	-	-	-
	Bus Adm: Health Care Mgmt - not recognized by BOR	EB58	10	0.2%	1	0.0%	2	0.0%	1	0.0%	-	-	-	-
	Customer Service/Marketing -CERT-terminated 3/21/13 no degrees granted after 7/1/14	EK03	-	-	1	0.0%	1	0.0%	1	0.0%	1	0.0%	0	0.0%
Fall Enrl	BUSINESS ADMINISTRATION TOTAL		543	9.7%	561	9.1%	524	8.8%	548	9.0%	534	9.2%	-14	-2.6%

FINAL Enrollment Profile for Fall 2013 Semester

Fall 2013 Program Enrollments as Percentage of Semester Enrollment (continued)
#=Number of students enrolled, %=program enrollment as a percent of total enrollments

Program & Group	Major Description	Code	2009		2010		2011		2012		2013		% Difference within Major last year	
			#	%	#	%	#	%	#	%	#	%	#	%
Business Office Technology	BOT: Admin Support Assistant - CERT	EJO9	2	0.0%	4	0.1%	2	0.0%	3	0.0%	4	0.1%	1	33.3%
	BOT: Executive Assistant	EB18	30	0.5%	30	0.5%	18	0.3%	12	0.2%	18	0.3%	6	50.0%
	BOT: Word Processing	EA92	4	0.1%	4	0.1%	4	0.1%	3	0.0%	3	0.1%	0	0.0%
	BOT: Legal Assisting	EJ70	1	0.0%	1	0.0%	-	-	-	-	-	-	-	-
	BOT: Word Processing - CERT* terminated 3/21/13 no degrees granted after 7/1/14	EJ60	-	-	-	-	-	-	-	-	-	-	-	-
Fall Enrl	BUSINESS OFFICE TECHNOLOGY TOTAL		37	0.7%	39	0.6%	24	0.4%	18	0.3%	25	0.4%	7	38.9%
Criminal Justice	Criminal Justice	EB13	409	7.3%	489	7.9%	490	8.2%	456	7.5%	450	7.7%	-6	-1.3%
	Corrections - CERT	EJ62	2	0.0%	3	0.0%	2	0.0%	2	0.0%	1	0.0%	-1	-50.0%
	Criminal Investigation - CERT	EJ61	12	0.2%	13	0.2%	14	0.2%	10	0.2%	10	0.2%	0	0.0%
	Police Management & Admin - CERT	EJ06	4	0.1%	3	0.0%	4	0.1%	5	0.1%	2	0.0%	-3	-60.0%
	Security Operations - CERT-discontinued	EJ63	-	-	-	-	1	0.0%	1	0.0%	-	-	-	-
Fall Enrl	CRIMINAL JUSTICE TOTAL		427	7.6%	508	8.2%	511	8.6%	474	7.8%	463	8.0%	-11	-2.3%
Communications	LAS: Journalism/Communications	EB46	77	1.4%	77	1.2%	63	1.1%	62	1.0%	72	1.2%	10	16.1%
Fall Enrl	COMMUNICATIONS TOTAL		77	1.4%	77	1.2%	63	1.1%	62	1.0%	72	1.2%	10	16.1%

FINAL Enrollment Profile for Fall 2013 Semester

Fall 2013 Program Enrollments as Percentage of Semester Enrollment (continued) #=Number of students enrolled, %=program enrollment as a percent of total enrollments

Program & Group	Major Description	Code	2009		2010		2011		2012		2013		% Difference from last year	
			#	%	#	%	#	%	#	%	#	%	#	%
Early Childhood Education	Early Childhood Education	EA95	286	5.1%	314	5.1%	295	4.9%	276	4.5%	253	4.4%	-23	-8.3%
	Early Childhood: Special Education	EB14	37	0.7%	35	0.6%	28	0.5%	32	0.5%	23	0.4%	-9	-28.1%
	Child Development Associate Prep - CERT	EJ73	11	0.2%	11	0.2%	7	0.1%	8	0.1%	1	0.0%	-7	-87.5%
	Early Childhood Ed - CERT	EJ89	36	0.6%	30	0.5%	29	0.5%	22	0.4%	21	0.4%	-1	-4.5%
	Early Childhood Education Administrator - CERT	EJ79	-	-	-	-	-	-	-	-	1	0.0%	-	-
	Infant & Toddler Care - CERT	EJ07	6	0.1%	6	0.1%	3	0.1%	-	-	-	-	-	-
Fall Enrl	EARLY CHILDHOOD EDUCATION TOTAL		376	6.7%	396	6.4%	362	6.1%	338	5.5%	299	5.1%	-39	-11.5%

FINAL Enrollment Profile for Fall 2013 Semester

Fall 2013 Program Enrollments as Percentage of Semester Enrollment (continued)

#=Number of students enrolled, %=program enrollment as a percent of total enrollments

Program & Group	Major Description	Code	2009		2010		2011		2012		2013		% Difference from last year	
			#	%	#	%	#	%	#	%	#	%	#	%
Engineering Science	Aviation Maintenance	EA30	4	0.1%	6	0.1%	6	0.1%	8	0.1%	9	0.2%	1	12.5%
	Technology Studies	EF11	-	-	1	0.0%	1	0.0%	2	0.0%	1	0.0%	-1	-50.0%
	Technology Studies	EA90	3	0.1%	-	-	1	0.0%	-	-	-	-	-	-
	Technology Studies: Electrical	EF06	11	0.2%	15	0.2%	10	0.2%	13	0.2%	5	0.1%	-8	-61.5%
	Engineering Science/Pre-Engineering	EB16	45	0.8%	37	0.6%	46	0.8%	49	0.8%	61	1.0%	12	24.5%
	LAS: pre-Engineering	EB47	28	0.5%	31	0.5%	36	0.6%	34	0.6%	28	0.5%	-6	-17.6%
	Technology Studies: Eng. Technology	EF12	1	0.0%	2	0.0%	1	0.0%	1	0.0%	2	0.0%	1	100.0%
	Technology Studies: Eng. Technology Option	EF13	-	-	-	-	-	-	-	-	1	0.0%	-	-
	Technology Studies: Industrial Tech. Option	EF19	-	-	-	-	-	-	3	0.0%	5	0.1%	2	66.7%
	Technology Studies: Industry Tech	EA08	4	0.1%	1	0.0%	2	0.0%	1	0.0%	1	0.0%	0	0.0%
	Machine Technology Level I - CERT	EJ83	-	-	-	-	-	-	34	0.6%	23	0.4%	-11	-32.4%
	Machine Technology Level II - CERT	EJ84	-	-	-	-	-	-	2	0.0%	2	0.0%	0	0.0%
	Electrical - CERT	EN12	0	0.0%	2	0.0%	1	0.0%	1	0.0%	2	0.0%	1	100.0%
Fall Enrl	ENGINEERING SCIENCE TOTAL		96	1.7%	95	1.5%	104	1.7%	148	2.4%	140	2.4%	-8	-5.4%

FINAL Enrollment Profile for Fall 2013 Semester

Fall 2013 Program Enrollments as Percentage of Semester Enrollment (continued)

#=Number of students enrolled, %=program enrollment as a percent of total enrollments

Program & Group	Major Description	Code	2009		2010		2011		2012		2013		% Difference from last year	
			#	%	#	%	#	%	#	%	#	%	#	%
ESL Advanced	Advanced English Proficiency- CERT - not recognized by IPEDS	EJ03	21	0.4%	11	0.2%	11	0.2%	10	0.2%	5	0.1%	-5	-50.0%
Fall Enrl	ESL ADVANCED TOTAL		21	0.4%	11	0.2%	11	0.2%	10	0.2%	5	0.1%	-5	-50.0%
General Studies	General Studies (this excludes students who are tagged as Nursing, Pre-OTA, and Pre-PTA)	EB30	1,621	28.9%	1,965	31.7%	2,046	34.2%	2,116	34.7%	1,942	33.4%	-174	-8.2%
	Pre-Nursing	EB30	546	9.7%	614	9.9%	579	9.7%	596	9.8%	599	10.3%	3	0.5%
	Pre-OTA	EB30	20	0.4%	23	0.4%	23	0.4%	25	0.4%	19	0.3%	-6	-24.0%
	Pre-PTA	EB30	37	0.7%	44	0.7%	44	0.7%	52	0.9%	47	0.8%	-5	-9.6%
Fall Enrl	GENERAL STUDIES TOTAL		2,224	39.7%	2,646	42.7%	2,692	45.1%	2,789	45.7%	2,607	44.8%	-182	-6.5%
Health Occupations	Nursing	EA23	16	0.3%	14	0.2%	30	0.5%	17	0.3%	-	-	-	-
	Occupational Therapy Assistant	EA77	26	0.5%	38	0.6%	35	0.6%	36	0.6%	17	0.3%	-19	-52.8%
	Physical Therapy Assistant	EA79	10	0.2%	7	0.1%	9	0.2%	10	0.2%	13	0.2%	3	30.0%
	Health Careers Pathway - CERT	EK55	8	0.1%	4	0.1%	9	0.2%	10	0.2%	19	0.3%	9	90.0%
Fall Enrl	HEALTH OCCUPATIONS TOTAL		60	1.1%	63	1.0%	83	1.4%	73	1.2%	49	0.8%	-24	-32.9%

FINAL Enrollment Profile for Fall 2013 Semester

Fall 2013 Program Enrollments as Percentage of Semester Enrollment (continued) #=Number of students enrolled, %=program enrollment as a percent of total enrollments

Program & Group	Major Description	Code	2009		2010		2011		2012		2013		% Difference from last year	
			#	%	#	%	#	%	#	%	#	%	#	%
Human Services	Human Services	EB35	250	4.5%	284	4.6%	274	4.6%	271	4.4%	225	3.9%	-46	-17.0%
	LAS: Hum/Behavioral & Social Science	EB45	249	4.4%	226	3.6%	215	3.6%	198	3.2%	205	3.5%	7	3.5%
	HS: Behavioral Healthcare Spec I - CERT	EJ67	8	0.1%	8	0.1%	7	0.1%	12	0.2%	21	0.4%	9	75.0%
	HS: Behavioral Healthcare Spec II - CERT	EJ68	1	0.0%	2	0.0%	-	-	3	0.0%	-	-	-	-
	HS: Child/Youth Mental Health - CERT-discontinued	EJ71	9	0.2%	5	0.1%	4	0.1%	7	0.1%	3	0.1%	-4	-57.1%
	HS: Disabilities Spec - CERT -discontinued	EJ72	0	0.0%	1	0.0%	-	-	-	-	1	0.0%	-	-
	HS: Victim Services	EJ69	4	0.1%	-	-	1	0.0%	-	-	-	-	-	-
	HS: Mental Health - CERT - not recognized by BOR	EJ93	8	0.1%	5	0.1%	4	0.1%	2	0.0%	1	0.0%	-1	-50.0%
	Drug & Alcohol Rehab Counseling-discontinued	EF03	0	0.0%	-	-	-	-	-	-	-	-	-	-
Fall Enrl	HUMAN SERVICES TOTAL		529	9.4%	531	8.6%	505	8.5%	493	8.1%	456	7.8%	-37	-7.5%

FINAL Enrollment Profile for Fall 2013 Semester

Fall 2013 Program Enrollments as Percentage of Semester Enrollment (continued)

#=Number of students enrolled, %=program enrollment as a percent of total enrollments

Program & Group	Major Description	Code	2009		2010		2011		2012		2013		% Difference from last year	
			#	%	#	%	#	%	#	%	#	%	#	%
Information Technology	Computer Information Systems	EB60	115	2.1%	134	2.2%	124	2.1%	116	1.9%	98	1.7%	-18	-15.5%
	Network Administrator - CERT-discontinued	EJ04	2	0.0%	3	0.0%	1	0.0%	-	-	-	-	-	-
	PC Applications - CERT	EJ01	2	0.0%	3	0.0%	2	0.0%	-	-	-	-	-	-
	PC Repair Technology - CERT	EJ02	10	0.2%	6	0.1%	11	0.2%	9	0.1%	9	0.2%	0	0.0%
	Web Design Technology CERT	EK07	-	-	-	-	5	0.1%	4	0.1%	7	0.1%	3	75.0%
	LAS: Computer Science	EB38	30	0.5%	28	0.5%	31	0.5%	44	0.7%	38	0.7%	-6	-13.6%
	Technical Web Site Design - CERT - not recognized by BOR	EJ10	5	0.1%	8	0.1%	5	0.1%	2	0.0%	1	0.0%	-1	-50.0%
Fall Enrl	INFORMATION TECHNOLOGY TOTAL		164	2.9%	182	2.9%	179	3.0%	175	2.9%	153	2.6%	-22	-12.6%
Non Degree	NON DEGREE/MATRIC	EZ98	5	0.1%	3	0.0%	2	0.0%	2	0.0%	-	-	-	-
	Spec Non-Credit		1	0.0%	2	0.0%	-	-	-	-	-	-	-	-
	NON DEGREE/NON MATRIC	EZ99	571	10.2%	565	9.1%	413	6.9%	470	7.7%	525	9.0%	55	11.7%
Fall Enrl	NON DEGREE TOTAL		577	10.3%	570	9.2%	415	6.9%	472	7.7%	525	9.0%	53	11.2%
Science & Math	LAS: Math/Science	EB42	48	0.9%	53	0.9%	51	0.9%	44	0.7%	46	0.8%	2	4.5%
	LAS: Pre-Environmental Science	EB48	11	0.2%	23	0.4%	19	0.3%	13	0.2%	15	0.3%	2	15.4%
	Pathways to Teaching	EC35	-	-	3	0.0%	23	0.4%	30	0.5%	30	0.5%	0	0.0%
Fall Enrl	SCIENCES & MATH TOTAL		59	1.1%	79	1.3%	93	1.6%	87	1.4%	91	1.6%	4	4.6%
Theater	Theater Arts	EB61	32	0.6%	30	0.5%	22	0.4%	22	0.4%	26	0.4%	4	18.2%
Fall Enrl	THEATER ARTS		32	0.6%	30	0.5%	22	0.4%	22	0.4%	26	0.4%	4	18.2%
Total Fall Enrollment for HCC:			5,609	100%	6,197	100%	5,975	100%	6,097	100%	5,813	100.0%	-284	-4.7%

FINAL Enrollment Profile for Fall 2013 Semester

Program Enrollment by Student Type Fall 2013

		Student Type										Total	
		High School		Continuing		New Transfer		New Students		Re-Admit			
		#	% of total enrollment	#	% of total enrollment	#	% of total enrollment	#	% of total enrollment	#	% of total enrollment		
Accounting	EA03	-	-	136	3.6%	9	1.7%	33	3.1%	10	3.2%	188	3.2%
	EA06	-	-	1	0.0%	0	0.0%	0	0.0%	0	0.0%	1	0.0%
	EA61	-	-	9	0.2%	0	0.0%	2	0.2%	0	0.0%	11	0.2%
	EJ80	-	-	1	0.0%	0	0.0%	0	0.0%	0	0.0%	1	0.0%
	Total	-	-	147	3.9%	9	1.7%	35	3.2%	10	3.2%	201	3.5%
Business	EA56	-	-	29	0.8%	6	1.1%	6	0.6%	4	1.3%	45	0.8%
	EA60	-	-	72	1.9%	2	0.4%	16	1.5%	4	1.3%	94	1.6%
	EA65	-	-	8	0.2%	0	0.0%	0	0.0%	1	0.3%	9	0.2%
	EA67	-	-	179	4.8%	8	1.5%	40	3.7%	14	4.5%	241	4.1%
	EA89	-	-	43	1.1%	3	0.6%	10	0.9%	2	0.6%	58	1.0%
	EB55	-	-	19	0.5%	3	0.6%	8	0.7%	0	0.0%	30	0.5%
	EB56	-	-	21	0.6%	5	0.9%	3	0.3%	0	0.0%	29	0.5%
	EB62	-	-	1	0.0%	0	0.0%	4	0.4%	0	0.0%	5	0.1%
	EB63	-	-	7	0.2%	1	0.2%	0	0.0%	0	0.0%	8	0.1%
	EF08	-	-	4	0.1%	0	0.0%	1	0.1%	0	0.0%	5	0.1%
	EK03	-	-	1	0.0%	0	0.0%	0	0.0%	0	0.0%	1	0.0%
	EK05	-	-	5	0.1%	0	0.0%	3	0.3%	1	0.3%	9	0.2%
Total			389	10.4%	28	5.2%	91	8.4%	26	8.3%	534	9.2%	

FINAL Enrollment Profile for Fall 2013 Semester

Program Enrollment by Student Type Fall 2013 (continued)

		Student Type											Total
		High School		Continuing		New Transfer		New Students			Re-Admit		
		#	% of total enrollment	#	% of total enrollment	#	% of total enrollment	#	% of total enrollment	#	% of total enrollment		
Art	EB20	-	-	37	1.0%	0	0.0%	13	1.2%	2	0.6%	52	0.9%
	EB33	-	-	57	1.5%	3	0.6%	20	1.9%	3	1.0%	83	1.4%
	EB70	-	-	22	0.6%	0	0.0%	5	0.5%	0	0.0%	27	0.5%
	EK06	-	-	0	0.0%	0	0.0%	2	0.2%	0	0.0%	2	0.0%
	EJ91	-	-	1	0.0%	0	0.0%	0	0.0%	0	0.0%	1	0.0%
	EB59	-	-	2	0.1%	0	0.0%	0	0.0%	0	0.0%	2	0.0%
	Total	-	-	119	3.2%	3	0.6%	40	3.7%	5	1.6%	167	2.9%
Business Office Technology	EJO9	-	-	1	0.0%	2	0.4%	0	0.0%	1	0.3%	4	0.1%
	EB18	-	-	11	0.3%	2	0.4%	2	0.2%	3	1.0%	18	0.3%
	EA92	-	-	2	0.1%	0	0.0%	0	0.0%	1	0.3%	3	0.1%
	Total	-	-	14	0.4%	4	0.7%	2	0.2%	5	1.6%	25	0.4%
Criminal Justice	EB13	-	-	327	8.7%	22	4.1%	85	7.9%	16	5.1%	450	7.7%
	EJ62	-	-	0	0.0%	0	0.0%	1	0.1%	0	0.0%	1	0.0%
	EJ61	-	-	7	0.2%	1	0.2%	1	0.1%	1	0.3%	10	0.2%
	EJ06	-	-	2	0.1%	0	0.0%	0	0.0%	0	0.0%	2	0.0%
	Total	-	-	336	8.9%	23	4.3%	87	8.0%	17	5.4%	463	8.0%

FINAL Enrollment Profile for Fall 2013 Semester

Program Enrollment by Student Type Fall 2013 (continued)

		Student Type											Total
		High School		Continuing		New Transfer		New Students			Re-Admit		
		#	% of total enrollment	#	% of total enrollment	#	% of total enrollment	#	% of total enrollment	#	% of total enrollment		
Early Childhood Education	EA95	-	-	198	5.3%	17	3.2%	23	2.1%	15	4.8%	253	4.4%
	EB14	-	-	17	0.5%	0	0.0%	5	0.5%	1	0.3%	23	0.4%
	EJ73	-	-	1	0.0%	0	0.0%	0	0.0%	0	0.0%	1	0.0%
	EJ89	-	-	14	0.4%	1	0.2%	5	0.5%	1	0.3%	21	0.4%
	EH79	-	-	0	0.0%	1	0.2%	0	0.0%	0	0.0%	1	0.0%
	Total	-	-	230	6.1%	19	3.5%	33	3.1%	17	5.4%	299	5.1%
COMM	EB46	-	-	50	1.3%	4	0.7%	11	1.0%	7	2.2%	72	1.2%
	Total			50	1.3%	4	0.7%	11	1.0%	7	2.2%	72	1.2%

FINAL Enrollment Profile for Fall 2013 Semester

Program Enrollment by Student Type Fall 2013 (continued)

		Student Type										Total	
		High School		Continuing		New Transfer		New Students		Re-Admit			
		#	% of total enrollment	#	% of total enrollment	#	% of total enrollment	#	% of total enrollment	#	% of total enrollment		
Engineering	EA30	-	-	5	0.1%	1	0.2%	3	0.3%	0	0.0%	9	0.2%
	EF11	-	-	1	0.0%	0	0.0%	0	0.0%	0	0.0%	1	0.0%
	EF06	-	-	4	0.1%	0	0.0%	1	0.1%	0	0.0%	5	0.1%
	EB16	-	-	42	1.1%	7	1.3%	10	0.9%	2	0.6%	61	1.0%
	EB47	-	-	20	0.5%	2	0.4%	5	0.5%	1	0.3%	28	0.5%
	EF12	-	-	0	0.0%	0	0.0%	2	0.2%	0	0.0%	2	0.0%
	EF13	-	-	0	0.0%	0	0.0%	1	0.1%	0	0.0%	1	0.0%
	EF19	-	-	3	0.1%	0	0.0%	2	0.2%	0	0.0%	5	0.1%
	EA08	-	-	1	0.0%	0	0.0%	0	0.0%	0	0.0%	1	0.0%
	EJ83	-	-	1	0.0%	3	0.6%	16	1.5%	3	1.0%	23	0.4%
	EJ84	-	-	1	0.0%	0	0.0%	1	0.1%	0	0.0%	2	0.0%
	EN12	-	-	2	0.1%	0	0.0%	0	0.0%	0	0.0%	2	0.0%
	Total			80	2.1%	13	2.4%	41	3.8%	6	1.9%	140	2.4%
ESL	EJ03	-	-	2	0.1%	0	0.0%	3	0.3%	0	0.0%	5	0.1%
	Total			2	0.1%	0	0.0%	3	0.3%	0	0.0%	5	0.1%
General Studies	EB30	1	0.8%	1,697	45.2%	221	41.1%	541	50.0%	147	47.1%	2,607	44.8%
	Total	1	0.8%	1,697	45.2%	221	41.1%	541	50.0%	147	47.1%	2,607	44.8%

FINAL Enrollment Profile for Fall 2013 Semester

Program Enrollment by Student Type Fall 2013 Continued

		Student Type											Total
		High School		Continuing		New Transfer		New Students		Re-Admit			
		#	% of total enrollment	#	% of total enrollment	#	% of total enrollment	#	% of total enrollment	#	% of total enrollment		
Health Occupations	EA77	-	-	15	0.4%	2	0.4%	0	0.0%	0	0.0%	17	0.3%
	EA79	-	-	13	0.3%	0	0.0%	0	0.0%	0	0.0%	13	0.2%
	EK55	-	-	11	0.3%	2	0.4%	6	0.6%	0	0.0%	19	0.3%
	Total	-	-	39	1.0%	4	0.7%	6	0.6%	0	0.0%	49	0.8%
Human Services	EB35	-	-	176	4.7%	11	2.0%	23	2.1%	15	4.8%	225	3.9%
	EB45	-	-	150	4.0%	13	2.4%	30	2.8%	12	3.8%	205	3.5%
	EJ67	-	-	13	0.3%	2	0.4%	6	0.6%	0	0.0%	21	0.4%
	EJ71	-	-	1	0.0%	0	0.0%	0	0.0%	2	0.6%	3	0.1%
	EJ72	-	-	0	0.0%	0	0.0%	0	0.0%	1	0.3%	1	0.0%
	EJ93	-	-	1	0.0%	0	0.0%	0	0.0%	0	0.0%	1	0.0%
	Total	-	-	341	9.1%	26	4.8%	59	5.5%	30	9.6%	456	7.8%
Information Technology	EB60	-	-	75	2.0%	6	1.1%	11	1.0%	6	1.9%	98	1.7%
	EJ02	-	-	6	0.2%	0	0.0%	2	0.2%	1	0.3%	9	0.2%
	EK07	-	-	6	0.2%	1	0.2%	0	0.0%	0	0.0%	7	0.1%
	EB38	-	-	23	0.6%	2	0.4%	11	1.0%	2	0.6%	38	0.7%
	EJ10	-	-	1	0.0%	0	0.0%	0	0.0%	0	0.0%	1	0.0%
	Total	-	-	111	3.0%	9	1.7%	24	2.2%	9	2.9%	153	2.6%

FINAL Enrollment Profile for Fall 2013 Semester

		Fall 2013 Enrollment by Student Type										Total	
		High School		Continuing		New Transfer		New Students		Re-Admit			
		#	% of total enrollment	#	% of total enrollment	#	% of total enrollment	#	% of total enrollment	#	% of total enrollment		
Non-Degree	EZ99	126	99.2%	125	3.3%	161	29.9%	84	7.8%	29	9.3%	525	9.0%
	Total	126	99.2%	125	3.3%	161	29.9%	84	7.8%	29	9.3%	525	9.0%
Science & Math	EB42	-	-	29	0.8%	9	1.7%	7	0.6%	1	0.3%	46	0.8%
	EB48	-	-	10	0.3%	1	0.2%	4	0.4%	0	0.0%	15	0.3%
	EC35	-	-	19	0.5%	4	0.7%	5	0.5%	2	0.6%	30	0.5%
	Total	-	-	58	1.5%	14	2.6%	16	1.5%	3	1.0%	91	1.6%
Theater	EB61	-	-	17	0.5%	0	0.0%	8	0.7%	1	0.3%	26	0.4%
	Total	-	-	17	0.5%	0	0.0%	8	0.7%	1	0.3%	26	0.4%
Column Total		127	2.2%	3,755	64.6%	538	9.3%	1,081	18.6%	312	5.4%	5,813	100%

FINAL Enrollment Profile for Fall 2013 Semester

Program Enrollment by Developmental Courses Fall 2013

Program & Group	Major Description	Code	Students in major including College	Enrolled in Dev. Writing		Enrolled in Dev. Math		Enrolled in DS099		Enrolled in Dev. Reading		Enrolled in ESL	
			#	#	%	#	%	#	%	#	%	#	%
Accounting	Accounting Small Business Option	EA61	11	0	0.0%	0	0.0%	0	0.0%	0	0.0%	1	9.1%
	Accounting	EA03	188	18	9.6%	21	11.2%	18	9.6%	16	8.5%	11	5.9%
	Accounting Assistant Option - CERT - phasing out per BOR 070913	EA06	1	0	0.0%	0	0.0%	0	0.0%	0	0.0%	0	0.0%
	Accounting for Small Business - CERT - terminated 3/21/13 no degrees granted after 7/1/14	EJ80	1	0	0.0%	0	0.0%	0	0.0%	0	0.0%	0	0.0%
Fall Enrl	ACCOUNTING TOTAL		201	18	9.0%	21	10.4%	18	9.0%	16	8.0%	12	6.0%
Arts	Fine Arts: Art	EB20	52	4	7.7%	9	17.3%	4	7.7%	5	9.6%	0	0%
	Graphic Design	EB33	83	10	12.0%	21	25.3%	7	8.4%	11	13.3%	0	0%
	Graphic Design: MultiMedia	EB70	27	1	3.7%	4	14.8%	2	7.4%	1	3.7%	0	0%
	Web Design Graphics-CERT	EK06	2	0	0.0%	0	0.0%	1	50.0%	1	50.0%	0	0.0%
	Graphic Design - CERT	EJ91	1	1	100.0%	0	0.0%	0	0.0%	1	100.0%	0	0.0%
	Graphic Design: Comp Graphics - not recognized by BOR	EB59	2	0	0.0%	0	0.0%	0	0.0%	0	0.0%	0	0.0%
Fall Enrl	ARTS TOTAL		167	16	9.6%	34	20.4%	14	8.4%	19	11.4%	0	0.0%

FINAL Enrollment Profile for Fall 2013 Semester

Fall 2013 by Major (continued)

Program & Group	Major Description	Code	Students in major including College	Enrolled in Dev. Writing		Enrolled in Dev. Math		Enrolled in DS099		Enrolled in Dev. Reading		Enrolled in ESL	
			#	#	%	#	%	#	%	#	%	#	%
Business Admin.	Banking	EF08	5	1	20.0%	0	0.0%	1	20.0%	1	20.0%	1	20.0%
	Bus Adm: Customer Srv/Marketing	EB55	30	4	13.3%	7	23.3%	3	10.0%	3	10.0%	0	0.0%
	Bus Adm: Finance	EA56	45	4	8.9%	9	20.0%	4	8.9%	4	8.9%	0	0.0%
	Bus Adm: General	EA67	241	26	10.8%	33	13.7%	27	11.2%	27	11.2%	6	2.5%
	Bus Adm: Global Business	EA65	9	0	0.0%	2	22.2%	0	0.0%	0	0.0%	0	0.0%
	Bus Adm: Human Resource Mgmt	EB56	29	1	3.4%	2	6.9%	1	3.4%	1	3.4%	1	3.4%
	Bus Adm: Management	EA60	94	7	7.4%	14	14.9%	10	10.6%	13	13.8%	1	1.1%
	Bus Adm: Small Bus Management	EA89	58	6	10.3%	13	22.4%	5	8.6%	6	10.3%	1	1.7%
	CIS Web Development	EB63	8	0	0.0%	0	0.0%	0	0.0%	0	0.0%	0	0.0%
	Small Busi/Entrp Management - CERT	EK05	9	2	22.2%	2	22.2%	1	11.1%	1	11.1%	2	22.2%
	CIS: Business Information Technology	EB62	5	0	0.0%	2	40.0%	1	20.0%	1	20.0%	1	20.0%
	Customer Service/Marketing -CERT- terminated 3/21/13 no degrees granted after 7/1/14	EK03	1	0	0.0%	0	0.0%	0	0.0%	0	0.0%	1	100.0%
Fall Enrl	BUSINESS ADMINISTRATION TOTAL		534	51	9.6%	84	15.7%	53	9.9%	57	10.7%	14	2.6%

FINAL Enrollment Profile for Fall 2013 Semester

Fall 2013 by Major (continued)

Program & Group	Major Description	Code	Students in	Enrolled in Dev. Writing		Enrolled in Dev. Math		Enrolled in DS099		Enrolled in Dev. Reading		Enrolled in ESL	
			major including College	#	%	#	%	#	%	#	%	#	%
Business Office Technology	BOT: Admin Support Asst - CERT	EJO9	4	2	50.0%	0	0.0%	1	25.0%	0	0.0%	0	0.0%
	BOT: Executive Assistant	EB18	18	2	11.1%	2	11.1%	2	11.1%	0	0.0%	0	0.0%
	BOT: Word Processing	EA92	3	0	0.0%	1	33.3%	0	0.0%	0	0.0%	0	0.0%
Fall Enrl	BUSINESS OFFICE TECHNOLOGY TOTAL		25	4	16.0%	3	12.0%	3	12.0%	0	0%	0	0.0%
			#	#	%	#	%	#	%	#	%	#	%
Criminal Justice	Criminal Justice	EB13	450	59	13.1%	97	21.6%	52	11.6%	60	13.3%	1	0.2%
	Corrections - CERT	EJ62	1	0	0.0%	0	0.0%	1	#####	1	100.0%	0	0.0%
	Criminal Investigation - CERT	EJ61	10	5	50.0%	7	70.0%	3	30.0%	4	40.0%	0	0.0%
	Police Management & Admin - CERT	EJ06	2	0	0.0%	0	0.0%	0	0.0%	0	0.0%	0	0.0%
Fall Enrl	CRIMINAL JUSTICE TOTAL		463	64	13.8%	104	22.5%	56	12.1%	65	14.0%	1	0.2%
Communications	LAS: Journalism/Communications	EB46	72	7	9.7%	17	23.6%	4	5.6%	5	6.9%	1	1.4%
Fall Enrl	COMMUNICATIONS TOTAL		72	7	9.7%	17	23.6%	4	5.6%	5	6.9%	1	1.4%

FINAL Enrollment Profile for Fall 2013 Semester

Fall 2013 by Major (continued)

Program & Group	Major Description	Code	Total Students in major including College	Enrolled in Dev. Writing		Enrolled in Dev. Math		Enrolled in DS099		Enrolled in Dev. Reading		Enrolled in ESL	
				#	%	#	%	#	%	#	%	#	%
Early Childhood Education	Early Childhood Education	EA95	253	19	7.5%	40	15.8%	16	6.3%	25	9.9%	7	2.8%
	Early Childhood: Special Education	EB14	23	3	13.0%	3	13.0%	1	4.3%	1	4.3%	0	0.0%
	Early Childhood Ed. Administrator	EJ79	1	0	0.0%	0	0.0%	0	0.0%	0	0.0%	0	0.0%
	Child Devl Associate Prep - CERT	EJ73	1	0	0.0%	1	100.0%	0	0.0%	0	0.0%	0	0.0%
	Early Childhood Ed - CERT	EJ89	21	1	4.8%	2	9.5%	1	4.8%	2	9.5%	2	9.5%
Early Childhood Education	EARLY CHILDHOOD EDUCATION TOTAL		299	23	7.7%	46	15.4%	18	6.0%	28	9.4%	9	3.0%
Engineering Science	Aviation Maintenance	EA30	9	4	44.4%	3	33.3%	3	33.3%	2	22.2%	2	22.2%
	Technology Studies	EF11	1	0	0.0%	0	0.0%	0	0.0%	0	0.0%	0	0.0%
	Technology Studies: Electrical	EF06	5	1	20.0%	0	0.0%	1	20.0%	1	20.0%	0	0.0%
	Engineering Science/Pre-Engineering	EB16	61	3	4.9%	6	9.8%	2	3.3%	3	4.9%	2	3.3%
	LAS: pre-Engineering	EB47	28	2	7.1%	2	7.1%	3	10.7%	3	10.7%	3	10.7%
	Technology Studies: Eng. Technology	EF12	2	1	50.0%	0	0.0%	1	50.0%	1	50.0%	0	0.0%
	Technology Studies: Eng. Technology Option	EF13	1	1	100.0%	1	100.0%	1	#####	1	100.0%	0	0.0%
	Technology Studies: Industrial Tech. Option	EF19	5	1	20.0%	1	20.0%	0	0.0%	1	20.0%	1	20.0%
	TechnologyStudies: Indstry Tech	EA08	1	0	0.0%	0	0.0%	0	0.0%	0	0.0%	0	0.0%
	Machine Technology Level I - CERT	EJ83	23	6	26.1%	5	21.7%	5	21.7%	6	26.1%	0	0.0%
	Machine Technology Level II - CERT	EJ84	2	0	0.0%	0	0.0%	0	0.0%	0	0.0%	0	0.0%
	Electrical - CERT	EN12	2	1	50.0%	1	50.0%	0	0.0%	1	50.0%	1	50.0%
Engineering Science	ENGINEERING SCIENCE TOTAL		140	20	14.3%	19	13.6%	16	11.4%	19	13.6%	9	6.4%

FINAL Enrollment Profile for Fall 2013 Semester

Fall 2013 by Major (continued)

Program & Group	Major Description	Code	Total Students in major including College	Enrolled in Dev. Writing		Enrolled in Dev. Math		Enrolled in DS099		Enrolled in Dev. Reading		Enrolled in ESL	
				#	%	#	%	#	%	#	%	#	%
ESL Advanced	Advanced English Proficiency- CERT - not recognized by IPEDS	EJ03	5	0	0.0%	0	0.0%	0	0.0%	0	0.0%	4	80.0%
ESL Advanced	ESL ADVANCED TOTAL		5	0	0.0%	0	0.0%	0	0.0%	0	0.0%	4	80.0%
General Studies	General Studies (this excludes students who are tagged as Nursing, Pre-OTA, and Pre-PTA)	EB30	2,607	350	13.4%	546	20.9%	273	10.5%	301	11.5%	152	5.8%
General Studies	GENERAL STUDIES TOTAL		2,607	350	13.4%	546	20.9%	273	10.5%	301	11.5%	152	5.8%
Health	Occupational Therapy Asst	EA77	17	0	0.0%	0	0.0%	0	0.0%	0	0.0%	0	0.0%
	Physical Therapy Asst	EA79	13	0	0.0%	0	0.0%	0	0.0%	0	0.0%	0	0.0%
	Health Careers Pathway - CERT	EK55	19	4	21.1%	4	21.1%	5	26.3%	5	26.3%	1	5.3%
Fall Enrl	HEALTH OCCUPATIONS TOTAL		49	4	8.2%	4	8.2%	5	10.2%	5	10.2%	1	2.0%
Human Services	Human Services	EB35	225	30	13.3%	44	19.6%	22	9.8%	25	11.1%	1	0.4%
	LAS: Hum/Behav & Social Sci	EB45	205	16	7.8%	35	17.1%	15	7.3%	18	8.8%	2	1.0%
	HS: Behav Hlthcare Spec I - CERT	EJ67	21	2	9.5%	1	4.8%	2	9.5%	3	14.3%	0	0.0%
	HS: Chld/Youth Mntl Hlth - CERT-discontinued	EJ71	3	1	33.3%	0	0.0%	0	0.0%	0	0.0%	0	0.0%
	HS: Disabilities Spec - CERT-discontinued	EJ72	1	0	0.0%	0	0.0%	0	0.0%	0	0.0%	0	0.0%
Fall Enrl	HUMAN SERVICES TOTAL		456	49	10.7%	80	17.5%	39	8.6%	46	10.1%	3	0.7%

FINAL Enrollment Profile for Fall 2013 Semester

Fall 2013 by Major (continued)

Program & Group	Major Description	Code	Total Students in major including College	Enrolled in Dev. Writing		Enrolled in Dev. Math		Enrolled in DS099		Enrolled in Dev. Reading		Enrolled in ESL	
				#	%	#	%	#	%	#	%	#	%
Information Technology	Computer Information Systems	EB60	98	11	11.2%	14	14.3%	8	8.2%	12	12.2%	2	2.0%
	PC Repair Technology - CERT	EJ02	9	1	11.1%	0	0.0%	1	11.1%	0	0.0%	2	22.2%
	Web Design Technology CERT	EK07	7	0	0.0%	0	0.0%	0	0.0%	0	0.0%	0	0.0%
	LAS: Computer Science	EB38	38	4	10.5%	3	7.9%	4	10.5%	4	10.5%	1	2.6%
	Technical Web Site Design - CERT - not recognized by BOR	EJ10	1	0	0.0%	0	0.0%	0	0.0%	0	0.0%	0	0.0%
Fall Enrl	INFORMATION TECHNOLOGY TOTAL		153	16	10.5%	17	11.1%	13	8.5%	16	10.5%	5	3.3%
	NON DEGREE/NON MATRIC	EZ99	525	35	6.7%	20	3.8%	5	1.0%	18	3.4%	5	1.0%
Fall Enrl	NON DEGREE TOTAL		525	35	6.7%	20	3.8%	5	1.0%	18	3.4%	5	1.0%
Science & Math	LAS: Math/Science	EB42	46	3	6.5%	5	10.9%	4	8.7%	5	10.9%	3	6.5%
	LAS: Pre-Environmental Science	EB48	15	2	13.3%	1	6.7%	2	13.3%	2	13.3%	0	0.0%
	Pathways to Teaching	EC35	30	1	3.3%	4	13.3%	1	3.3%	1	3.3%	0	0.0%
Fall Enrl	SCIENCES & MATH TOTAL		91	6	6.6%	10	11.0%	7	7.7%	8	8.8%	3	3.3%
Theater	Theater Arts	EB61	26	1	3.8%	7	26.9%	1	3.8%	1	3.8%	0	0.0%
Fall Enrl	THEATER ARTS		26	1	3.8%	7	26.9%	1	3.8%	1	3.8%	0	0.0%
Total Fall Enrollment for HCC:			5,813	664	11.4%	1,012	17.4%	525	9.0%	604	10.4%	219	3.8%

Note: Data is captured on the freeze date each fall. A freeze date is a date determined by the college usually after the initial drop/add period of classes and uses those figures for reporting purposes. Freeze dates for fall semesters are the following: 9/8/09, 9/16/09, 9/13/10, 9/12/12, and 9/16/13

FINAL Enrollment Profile for Fall 2013 Semester

Program Enrollment 2013 High School Graduates from Service Area

Town	Name of High School	Dev. Writing		Dev. Math		DS099		Dev. Reading		ESL		Total # of High School Graduates, including college ready
		#	%	#	%	#	%	#	%	#	%	
ANSONIA	Ansonia High School	6	50.0%	5	41.7%	6	50.0%	6	50.0%	0	0.0%	12
	Emmett O'Brien Technical High School	2	28.6%	3	42.9%	2	28.6%	2	28.6%	0	0.0%	7
BRIDGEPORT	Bassick High School	19	45.2%	26	61.9%	20	47.6%	23	54.8%	8	19.0%	42
	Bridge Academy Charter School	4	80.0%	0	0.0%	3	60.0%	3	60.0%	0	0.0%	5
	Bridgeport Adult Education	2	66.7%	2	66.7%	2	66.7%	2	66.7%	1	33.3%	3
	Bridgeport International Academy	-	-	-	-	-	-	-	-	-	-	-
	Bridgeport Regional Vocational Aqua Cult School	-	-	-	-	-	-	-	-	-	-	-
	Bullard-Havens Technical High School	30	61.2%	32	65.3%	31	63.3%	30	61.2%	0	0.0%	49
	Center of Progressive Education	-	-	-	-	-	-	-	-	-	-	-
	Central Magnet High School	41	44.6%	39	42.4%	49	53.3%	50	54.3%	4	4.3%	92
	Central High Vocational	-	-	-	-	-	-	-	-	-	-	-
	Central High School Adult Education	3	100.0%	2	66.7%	3	100.0%	3	100.0%	0	0.0%	3
	Jewish High School of Connecticut	-	-	-	-	-	-	-	-	-	-	-
	Kolbe Cathedral Catholic High School	2	66.7%	1	33.3%	2	66.7%	2	66.7%	0	0.0%	3
	University School, Bridgeport	-	-	-	-	-	-	-	-	-	-	-
Warren Harding High School	24	66.7%	20	55.6%	25	69.4%	24	66.7%	3	8.3%	36	

FINAL Enrollment Profile for Fall 2013 Semester

Fall 2013 by High School (continued)

Town	Name of High School	Dev. Writing		Dev. Math		DS099		Dev. Reading		ESL		Total # of High School Graduates, including college ready
		#	%	#	%	#	%	#	%	#	%	
DERBY	Derby High School	4	80.0%	3	60.0%	3	60.0%	4	80.0%	0	0.0%	5
EASTON	Joel Barlow High School	2	50.0%	0	50.0%	0	50.0%	1	50.0%	0	50.0%	3
FAIRFIELD	Fairfield College Preparatory	0	0%	0	0%	0	0%	0	0%	0	0%	3
	Fairfield Ludlowe High School	2	28.6%	1	14.3%	3	42.9%	2	28.6%	0	0.0%	7
	Fairfield Warde High School	8	40.0%	8	40.0%	7	35.0%	8	40.0%	0	0.0%	20
	Notre Dame Catholic High School	2	25.0%	4	50.0%	3	37.5%	4	50.0%	0	0.0%	8
	Notre Dame High School	0	100.0%	0	0.0%	0	0.0%	0	0.0%	0	0.0%	1
MILFORD	Academy of Our Lady Mercy	-	-	-	-	-	-	-	-	-	-	-
	Beran Christian Academy	1	100.0%	0	100.0%	0	100.0%	0	100.0%	0	100.0%	1
	Foundation High School	-	-	-	-	-	-	-	-	-	-	-
	Jonathan Law High School	8	47.1%	4	23.5%	10	58.8%	10	58.8%	0	0.0%	17
	Joseph A Foran High School	1	25.0%	1	25.0%	1	25.0%	1	25.0%	0	0.0%	4
	Milford Academy	0	0.0%	0	0.0%	0	0.0%	0	0.0%	0	0.0%	1
	Milford Alternative Program	-	-	-	-	-	-	-	-	-	-	-
	Platt Technical High School	3	30.0%	4	40.0%	3	30.0%	1	10.0%	0	0.0%	10
	Woodhouse Academy	-	-	-	-	-	-	-	-	-	-	-
MONROE	Masuk High School	4	20.0%	4	20.0%	6	30.0%	5	25.0%	0	0.0%	20
SEYMOUR	Seymour High School	2	100.0	2	100.0	2	100.0	1	50.0%	0	0.0%	2

FINAL Enrollment Profile for Fall 2013 Semester

Fall 2013 by High School(continued)												
Town	Name of High School	Dev. Writing		Dev. Math		DS099		Dev. Reading		ESL		Total # of High School Graduates, including college ready
		#	%	#	%	#	%	#	%	#	%	
		SHELTON	Shelton High School	12	38.7%	8	25.8%	11	35.5%	16	51.6%	
STRATFORD	Stratford High School	17	43.6%	19	48.7%	17	43.6%	20	51.3%	0	0.0%	39
	Frank Scott Bunnel High School	13	43.3%	17	56.7%	13	43.3%	12	40.0%	0	0.0%	30
TRUMBULL	Christian Heritage High School	-	-	-	-	-	-	-	-	-	-	-
	St. Joseph High School	1	50.0%	1	50.0%	2	100.0%	2	100.0%	0	0.0%	2
	Trumbull High School	23	45.1%	8	15.7%	26	51.0%	25	49.0%	0	0.0%	51
Total		236	46.5%	214	42.2%	250	49.3%	257	50.7%	18	3.6%	507