

Housatonic Community College

Fall 2011- Enrollment Report



Office of Institutional Research

Beacon Hall 285

Many thanks to our own HCC student, Alexis Smith, for her editing work on this report.

Table of Contents

Head Count.....	4
Student Type.....	6
Full-Time/Part-Time Status.....	9

FINAL Enrollment Profile for Fall 2011 Semester

Registration Status.....	11
Instructional Method.....	11
Class Level.....	12
Course Level.....	12
Gender.....	13
Age.....	15
Race.....	16
Residency.....	19
Associate Degree Seeking Major.....	22
Certificate Seeking.....	23
Advisors, Counselors, and Faculty Advisors.....	24

HOUSATONIC COMMUNITY COLLEGE

Fall 2011 Enrollment FINAL
Monday, September 12, 2011

	Fall 2011 FREEZE Data	Fall 2010 FREEZE data	Number of Students	Percentage Difference
Full-Time	2,242	2,348	-106	-4.5%
Part-Time	3,733	3,849	-116	-3.0%
Total Headcount	5,975	6,197	-222	-3.6%
Credit Hours	52,167	54,032	-1,865	-3.5%
FTE	3,478	3,602	-124	-3.4%

(Source: SWRXF03)

<i>Freeze Dates</i>	<i>Freeze dates are</i>
---------------------	-------------------------

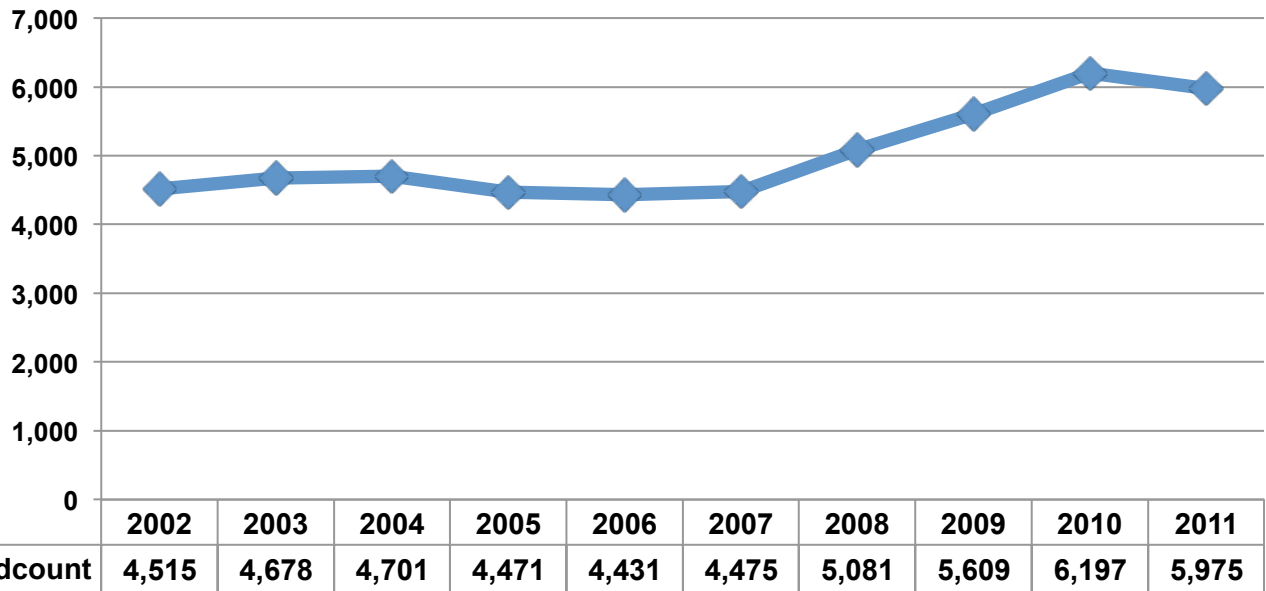
FINAL Enrollment Profile for Fall 2011 Semester

<i>Fall 2004</i>	<i>September 22, 2004</i>	<i>determined by the College and are a capture of the data at a particular time for the purpose of consistency in reporting. The date usually occurs after the initial drop/add period of classes.</i>
<i>Fall 2005</i>	<i>September 12, 2005</i>	
<i>Fall 2006</i>	<i>September 12, 2006</i>	
<i>Fall 2007</i>	<i>September 13, 2007</i>	
<i>Fall 2008</i>	<i>September 16, 2008</i>	
<i>Fall 2009</i>	<i>September 8, 2009</i>	
<i>Fall 2010</i>	<i>September 13, 2010</i>	
<i>Fall 2011</i>	<i>September 12, 2011</i>	

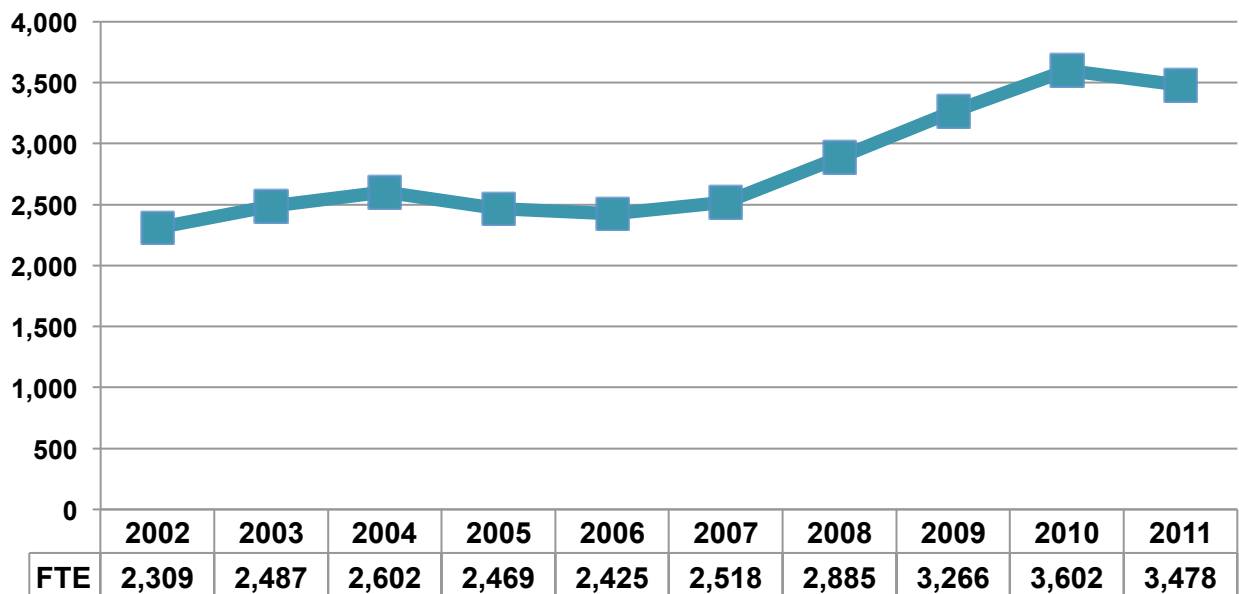
The above freeze dates are used for the ten year trend graphs on the following pages.

Ten Year Trends – Fall Semesters

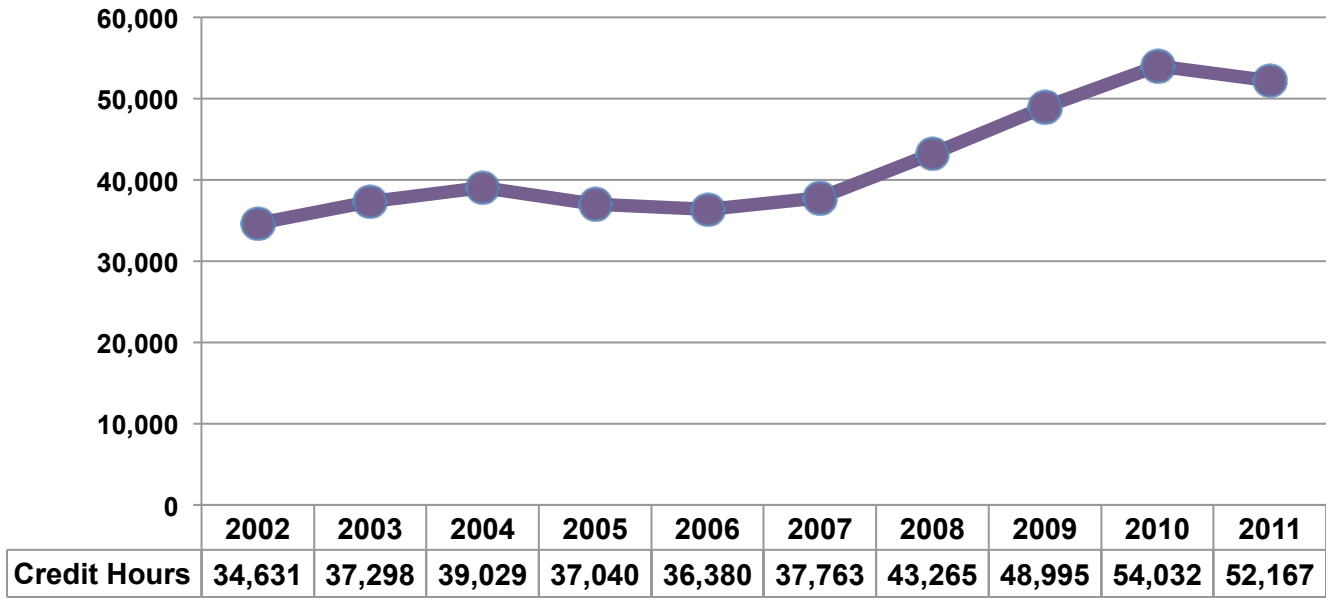
Fall Semester Headcounts



Fall Semesters - Full Time Equivalency (FTE)



Fall Semesters - Credit Hour Production



FINAL Enrollment Profile for Fall 2011 Semester

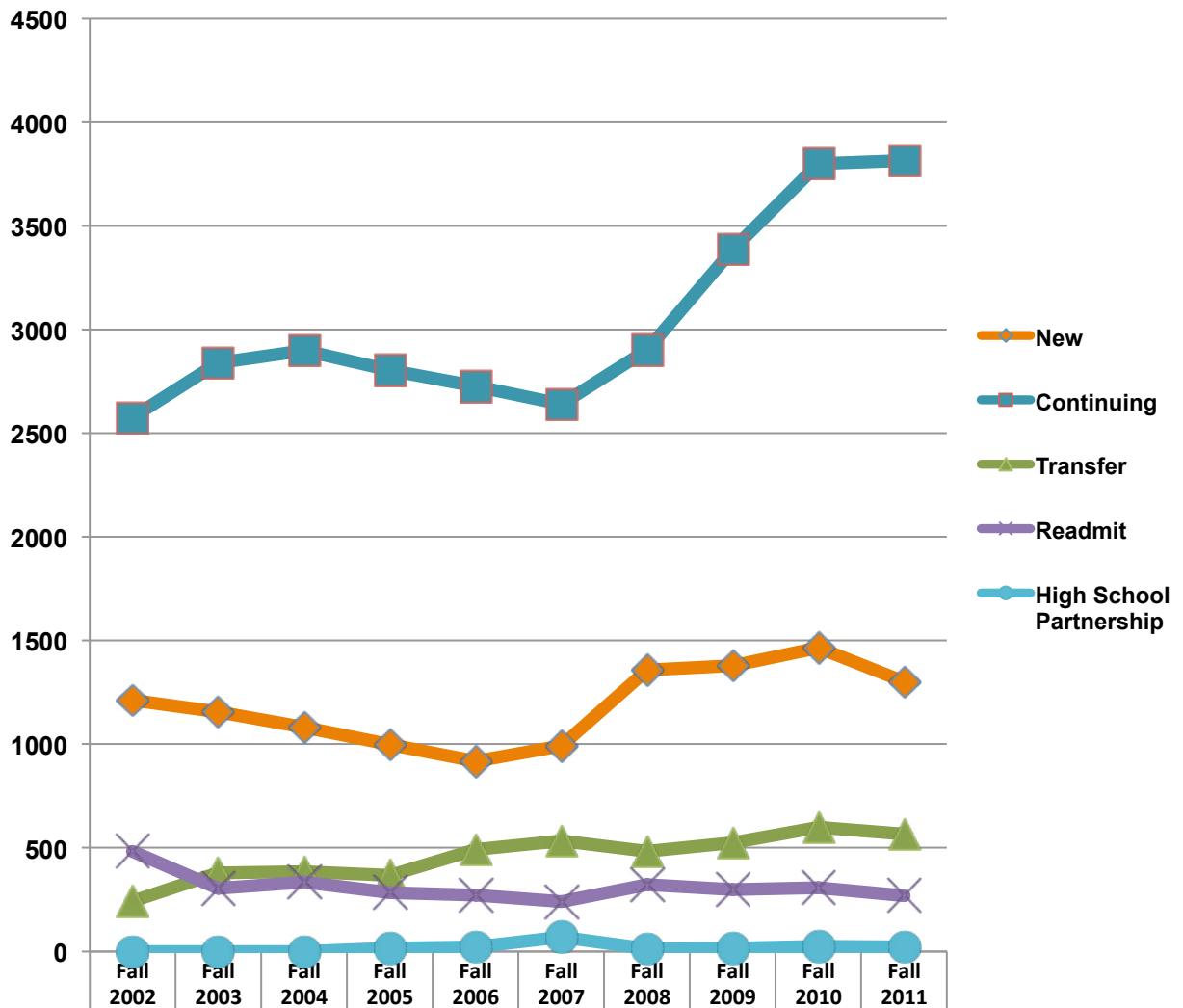
Student Type	Headcount Fall 2011 FINAL				Headcount Fall 2010 FINAL			
	Non-Degree	Degree Seeking	Total#	Total %	Non-Degree	Degree Seeking	Total #	Total %
New Students	88	1,213	1,301	21.8%	153	1,312	1,465	23.6%
Continuing Students	147	3,668	3,815	63.8%	162	3,639	3,801	61.3%
Transfer Students	137	431	568	9.5%	190	409	599	9.7%
Re-Admitted Students	23	247	270	4.5%	41	267	308	5.0%
Other	20	1	21	.4%	24	0	24	.4%
Total Registered	415	5,560	5,975	100.0%	570	5,488	6,197	100.0%

Of the 5,975 students who registered for the fall 2011 semester as of the official freeze, the majority of students are continuing students (n=3,815, 63.8%). Twenty-two percent (n=1,301, 21.8%) of the student body are new students, first time in college. The fall 2011 semester profile of student type was similar to fall 2010, although the student body percentage of new students is slightly less and continuing students make up a slightly higher percentage. Much outreach work has been done in the Advising Office to guide students to claim a major. The percentage of students who are not degree seeking this fall 2011 is at 7% of the student body, although it was at 9% last fall 2010.

FINAL Enrollment Profile for Fall 2011 Semester

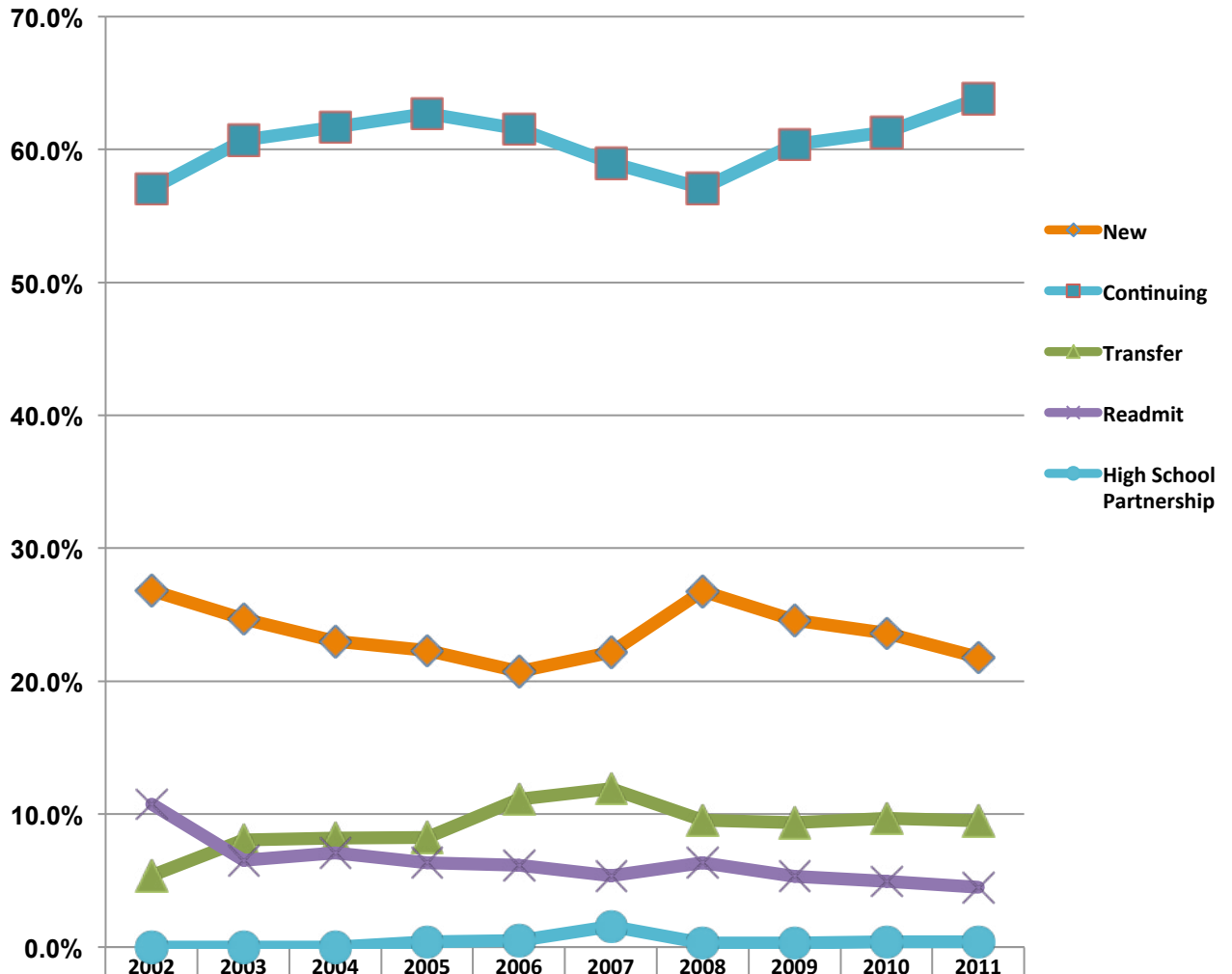
Student Type – Fall Semesters

Below is a chart indicating the enrollment status of HCC students over the last ten years.



	Fall 2002	Fall 2003	Fall 2004	Fall 2005	Fall 2006	Fall 2007	Fall 2008	Fall 2009	Fall 2010	Fall 2011
New	1211	1155	1,082	998	918	992	1,359	1,380	1,465	1,301
Continuing	2576	2840	2,899	2,804	2,727	2,640	2,901	3,386	3,801	3,815
Transfer	243	378	386	369	492	533	484	526	599	568
Readmit	485	305	334	283	272	241	322	299	308	270
High School Partnership	-	-	-	17	22	69	15	18	24	21

Student Type – Fall Semesters *Percentage of Total Enrollment*



	2002	2003	2004	2005	2006	2007	2008	2009	2010	2011
New	26.8%	24.7%	23.0%	22.3%	20.7%	22.2%	26.7%	24.6%	23.6%	21.8%
Continuing	57.1%	60.7%	61.7%	62.7%	61.5%	59.0%	57.1%	60.4%	61.3%	63.8%
Transfer	5.4%	8.1%	8.2%	8.3%	11.1%	11.9%	9.5%	9.4%	9.7%	9.5%
Readmit	10.7%	6.5%	7.1%	6.3%	6.1%	5.4%	6.3%	5.3%	5.0%	4.5%
High School Partnership	-	-	-	0.4%	0.5%	1.5%	0.3%	0.3%	0.4%	0.4%

The increase in enrollment this fall shows that we had an increase in the percentage of continuing students and less of an increase in the percentage of new, transfer, and readmitted students.

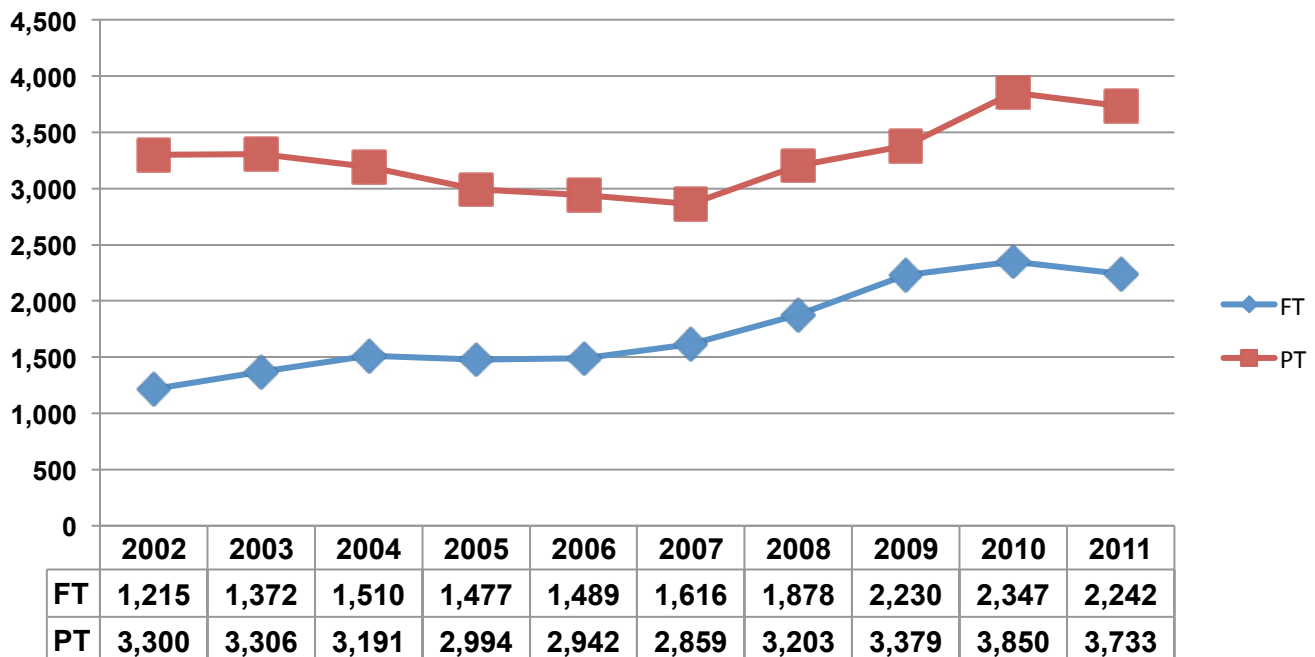
FINAL Enrollment Profile for Fall 2011 Semester

FINAL Fall 2011		
FT/PT Status	Number	Percentage
Full-Time	2,242	37.5%
Part-Time	3,733	62.5%
Total Students	5,975	100.0%

FINAL Fall 2010	
Number	Percentage
2,347	37.8%
3,850	62.2%
6,197	100.0%

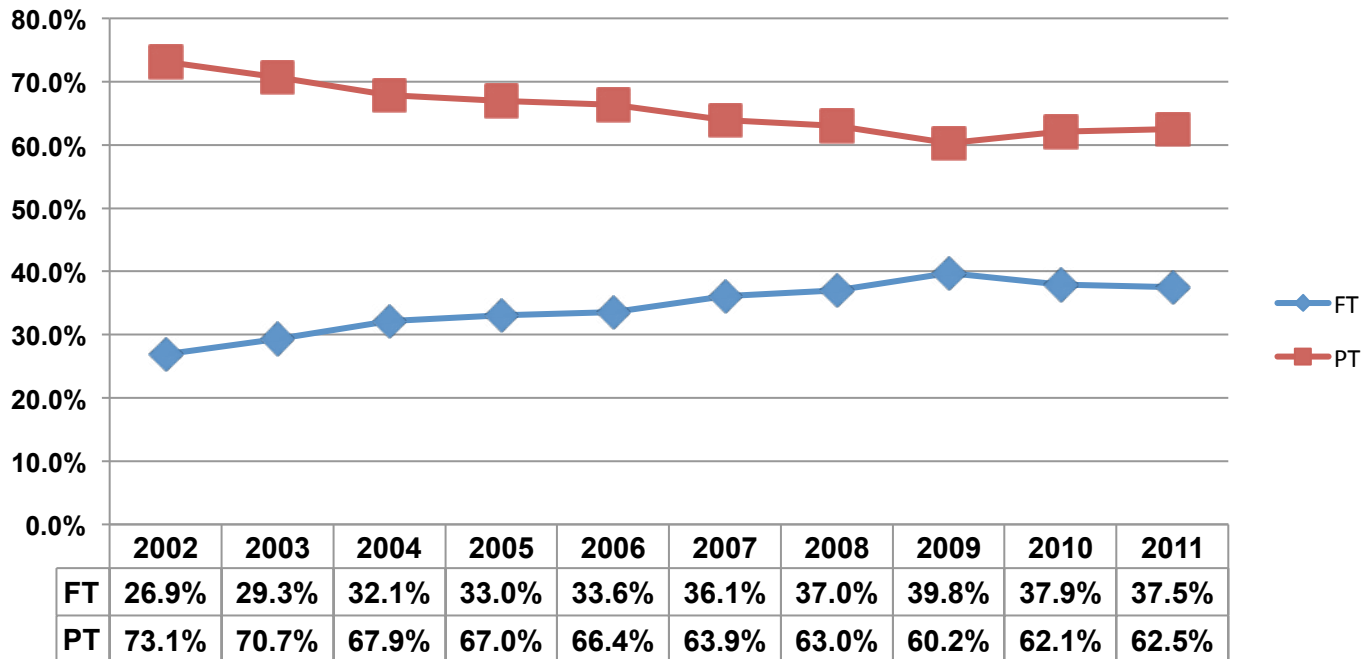
The percentage of enrollment status (full and part time) for the fall 2011 semester is similar to the enrollment status of the final figures for fall 2010 semester.

Full-Time/Part-Time Status – Fall Semesters



FINAL Enrollment Profile for Fall 2011 Semester

Full-Time/Part-Time Status – Fall Semesters Percentage of Total Enrollment



FINAL Enrollment Profile for Fall 2011 Semester

Registration Status	Final (Seats) Fall '11		Final (Seats) Fall '10	
Seats Registered in Person	10,518	63.6%	12,185	71.0%
Seats Registered on the Web	6,013	36.4%	4,977	29.0%
Total	16,531	100.0%	17,162	100.0%

The final figures for fall 2011 shows that 63.6% (n=10,518) of classes were registered in person on the college campus. We saw an increase from fall 2010 to fall 2011 in classes registered online. We theorized that this increase was due to publishing the spring 2011 class schedule online and eliminating the hard copy normally provided.

Instructional Method (Seats) Fall 2011 FINAL			Instructional Method (Seats) Fall 2010 FINAL	
Traditional	15,268	92.3%	15,796	92.0%
Online	971	5.9%	1,073	6.3%
Hybrid	177	1.1%	176	1.0%
Independent Study	24	.1%	14	.1%
Internships	91	.6%	103	.6%
Total Seats Registered	16,531	100.0%	17,162	100.0%

Students continue to primarily register for courses that are taught utilizing the traditional method of teaching (n=15,268, 92.3%), while only 7% of courses are taken through distance learning (online and hybrid courses). The distribution of course teaching methods for fall 2011 registrants are similar to the final figures for the fall 2010 semester, although there has been a decrease in online courses. Online and hybrid courses fill early in the registration process. It is possible that the distribution might show a higher percentage of enrolled students in the online and hybrid classes if there was more availability.

FINAL Enrollment Profile for Fall 2011 Semester

	FINAL Fall 2011	
Class Level	Number	Percentage
Freshmen	4,720	79.0%
Sophomore	1,255	21.0%
Total Students	5,975	100.0%

	FINAL Fall 2010	
	Number	Percentage
	5,053	81.5%
	1,144	18.5%
	6,197	100.0%

Freshmen are defined as accumulating 0-32 GPA credits, Sophomores are defined as earning 33 or more GPA credits.

	FINAL Fall 2011	
Course Level	Number	Percentage
Developmental	3,571	21.6%
College 100	9,720	58.8%
College 200	3,240	19.6%
Total Students	16,531	100.0%

	FINAL Fall 2010	
	Number	Percentage
	3,898	22.7%
	10,120	58.9%
	3,166	18.4%
	17,184	100.0%

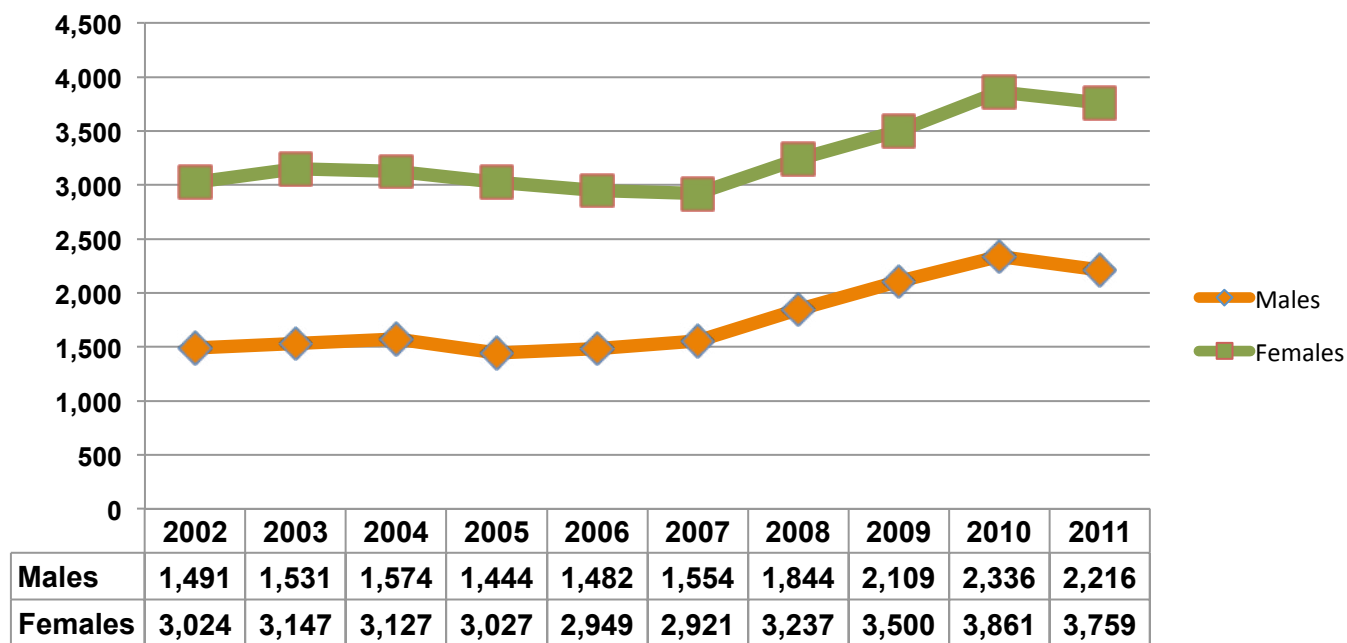
FINAL Enrollment Profile for Fall 2011 Semester

Gender	FINAL Fall 2011	
	Number	Percentage
Male	2,216	37.1%
Female	3,759	62.9%
Total Students	5,975	100.0%

FINAL Fall 2010	
Number	Percentage
2,336	37.7%
3,861	62.3%
6,197	100.0%

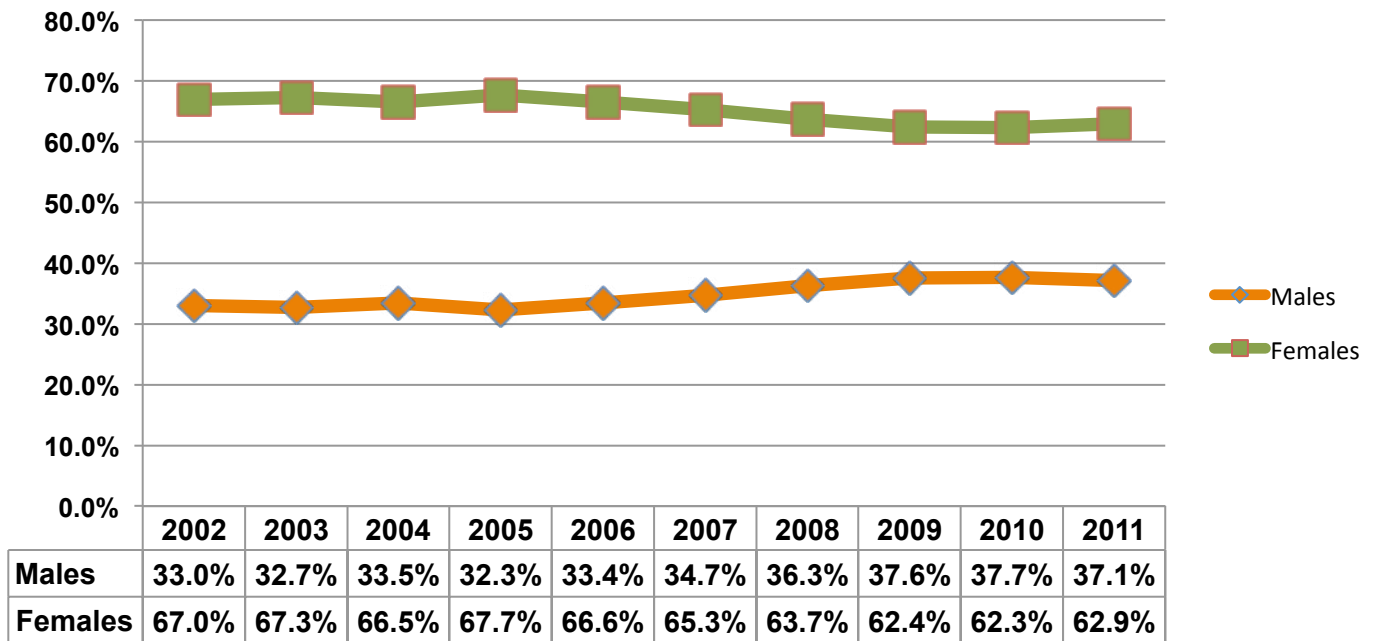
The majority of students who have enrolled this fall semester are female (n=3,759, 62.9%). The gender of registered students is similar to the profile of gender of students registered in the final roster for fall 2010.

Gender - Fall Semesters- Headcount



FINAL Enrollment Profile for Fall 2011 Semester

Gender – Fall Semesters Percentage of Total Enrollment

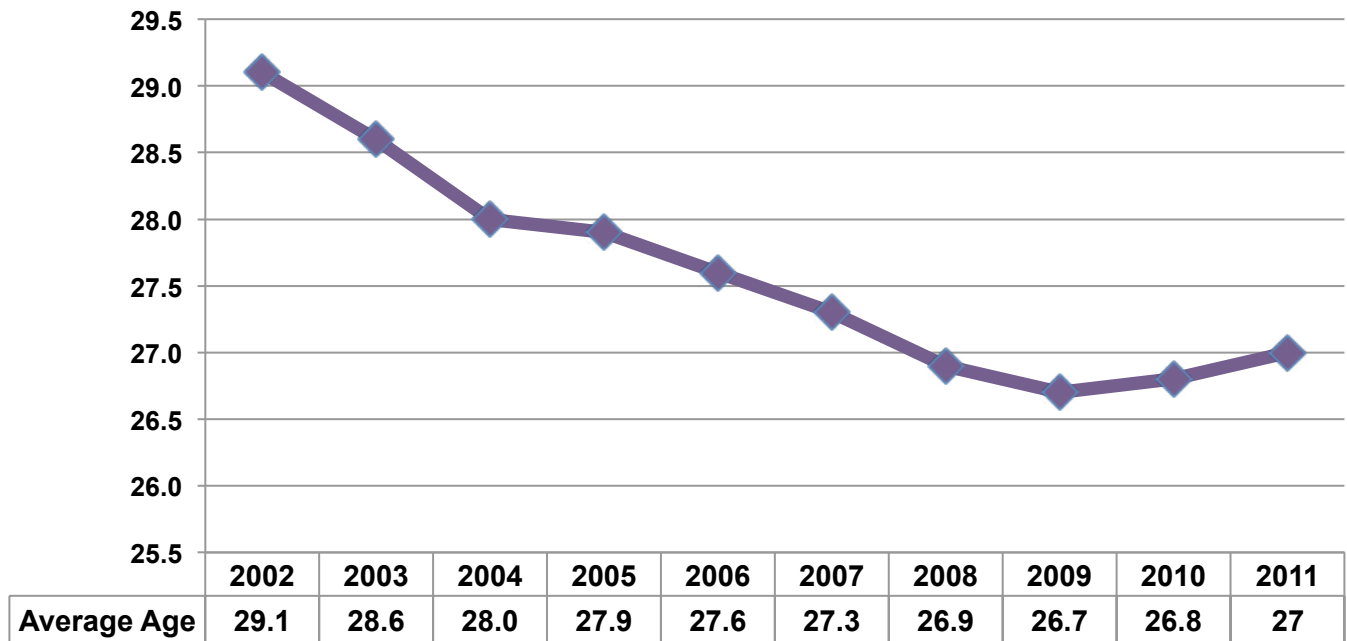


FINAL Enrollment Profile for Fall 2011 Semester

Final Fall 2011	
Age	
Mean	27.03
Median	23
Mode	19

FINAL Fall 2010	
Age	
Mean	26.8
Median	23
Mode	19

Average Age of Students – Fall Semesters

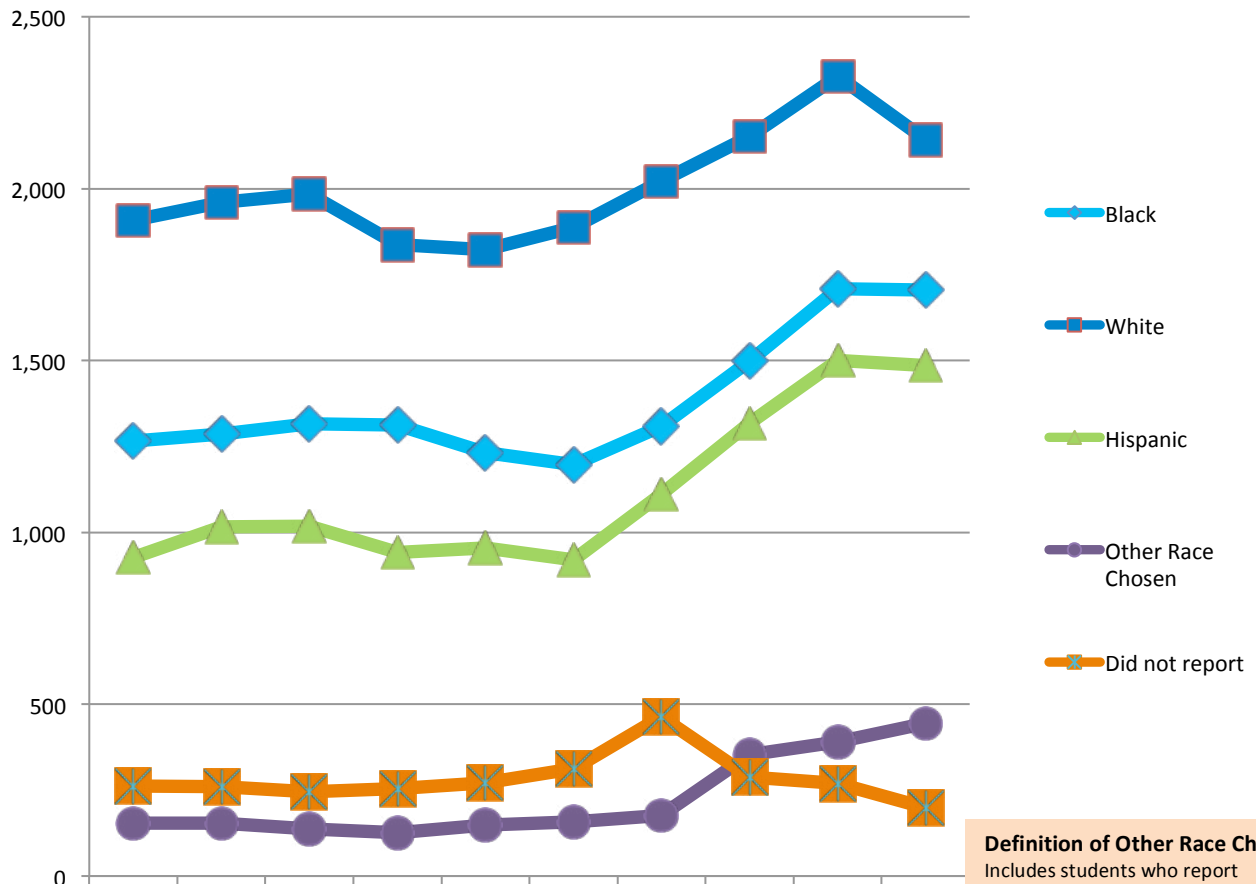


FINAL Enrollment Profile for Fall 2011 Semester

Ethnicity/Race	FINAL Fall 2011		FINAL Fall 2010	
	# of Students	% of Students	# of Students	% of Students
White (10)	2,142	35.8%	2,328	37.5%
Black or African American (20)	1,705	28.5%	1,708	27.6%
Hispanic (2)	1,485	24.9%	1,500	24.2%
Asian (45)	181	3.2%	185	3.0%
American Indian/Alaskan Native (50)	11	.1%	11	.2%
Native Hawaiian or Pacific Islander (80)	5	.1%	5	.1%
Other Race (90)	155	2.6%	113	1.8%
Multi Races (MULTI)	93	1.5%	77	1.2%
Choose Not to Respond (60) & No Response (NR)	198	3.3%	270	4.4%
Total Students	5,975	100.0%	6,197	100.0%

The distribution percentage of students' race/ethnicity registered for fall 2011 is very similar to the final fall 2010 enrollment profile. There has been a slight decrease in the percentage of white students in the student body and a slight increase in the percentage of black students. Hispanic student enrollment has been increasing each semester resulting in the highest percentage at 25% of the student body. There is an increase of students who are reporting their race/ethnicity as "multiple races" and "other race not listed." These categories have recently been added to the admissions application recently in accordance with the U.S. government for reporting purposes. An outreach effort to obtain race/ethnicity information from students has resulted in a decrease in the number of students enrolled with missing information.

Race/Ethnicity of Students – Fall Semesters

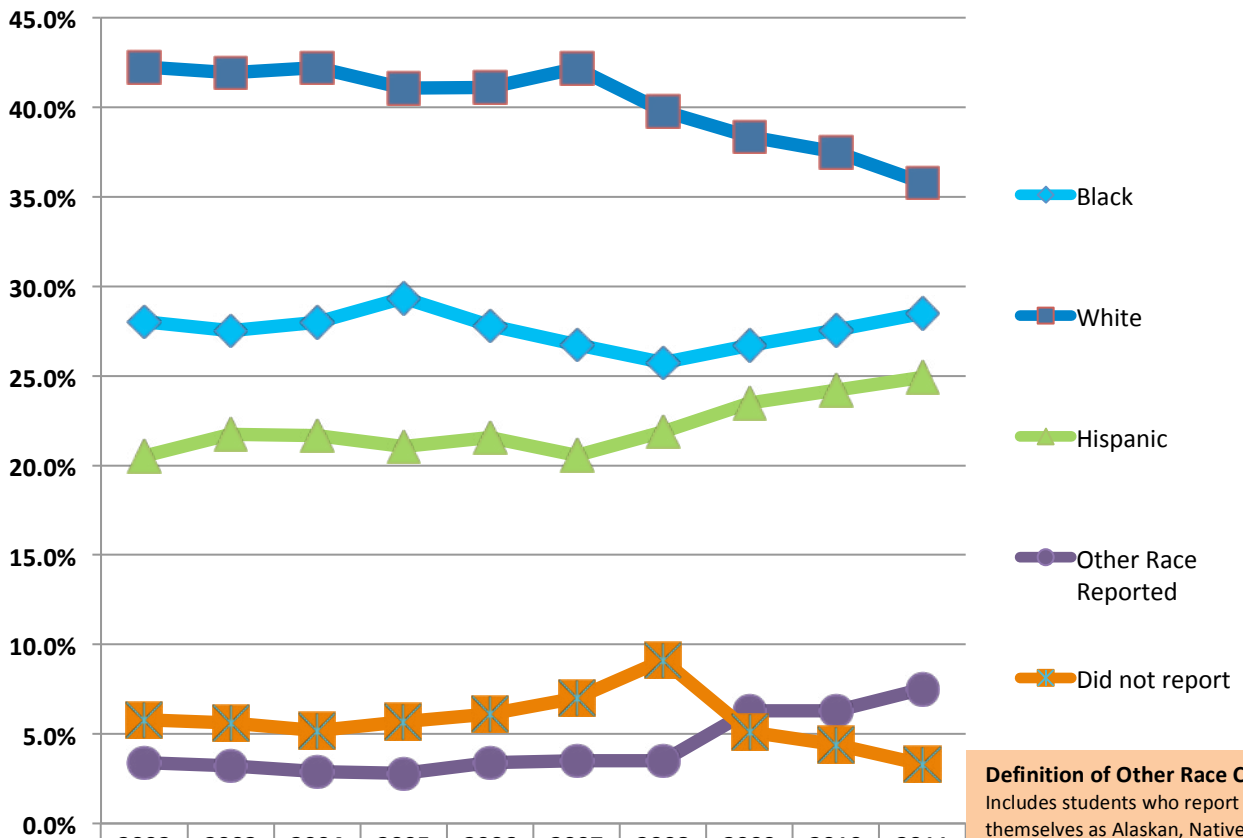


Definition of Other Race Chosen:
Includes students who report themselves as Alaskan, Native American, Hawaiian, Pacific Islander, Multiple Races, Asian, or any other race reported.

	2002	2003	2004	2005	2006	2007	2008	2009	2010	2011
Black	1,266	1,287	1,316	1,313	1,233	1,197	1,308	1,498	1,708	1,705
White	1,908	1,961	1,984	1,837	1,822	1,887	2,022	2,152	2,328	2,142
Hispanic	926	1,016	1,018	941	955	920	1,111	1,318	1,500	1,485
Other Race Chosen	153	154	137	126	149	158	177	353	391	445
Did not report	262	260	246	254	272	313	463	288	270	198

Race/Ethnicity of Students – Fall Semesters

Percentage of Total Enrollment



Definition of Other Race Chosen:
Includes students who report themselves as Alaskan, Native American, Hawaiian, Pacific Islander, Multiple Races, Asian, or any other race reported.

	2002	2003	2004	2005	2006	2007	2008	2009	2010	2011
Black	28.0%	27.5%	28.0%	29.4%	27.8%	26.7%	25.7%	26.7%	27.6%	28.5%
White	42.3%	41.9%	42.2%	41.1%	41.1%	42.2%	39.8%	38.4%	37.5%	35.8%
Hispanic	20.5%	21.7%	21.7%	21.0%	21.6%	20.6%	21.9%	23.5%	24.2%	24.9%
Other Race Reported	3.4%	3.2%	2.9%	2.8%	3.4%	3.5%	3.5%	6.3%	6.3%	7.5%
Did not report	5.8%	5.6%	5.2%	5.7%	6.1%	7.0%	9.1%	5.1%	4.4%	3.3%

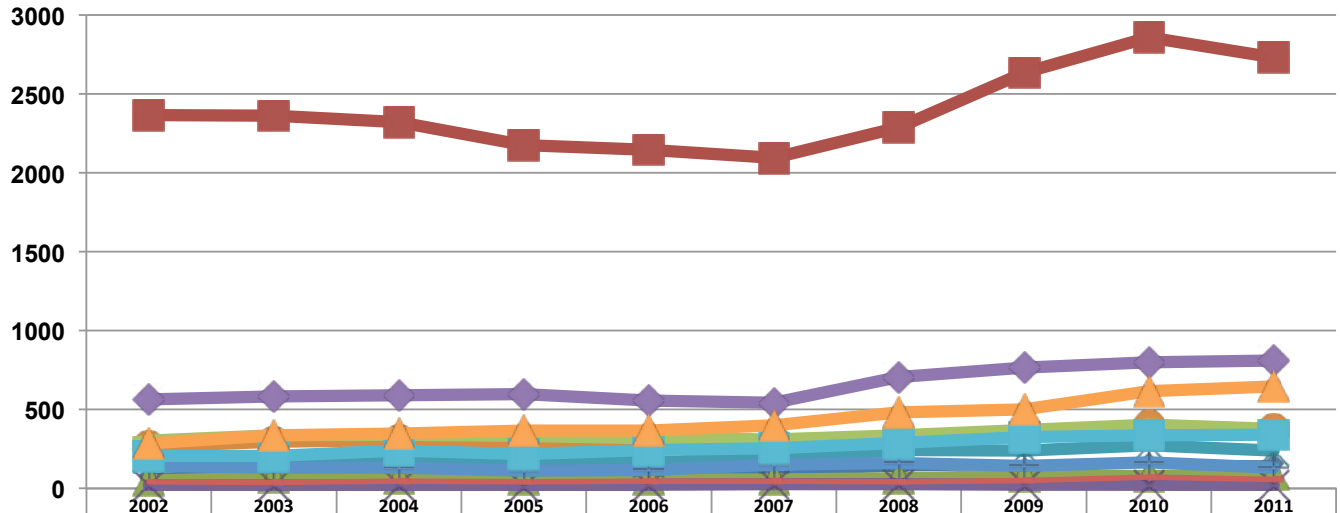
Student Residency

Student Residency	Fall 2011		Fall 2010		% increase/decrease
	Count	% of enrollment	Count	% of enrollment	
Ansonia	162	2.7%	166	2.7%	0.0%
Bridgeport	2,732	45.7%	2,857	46.0%	-.3%
Derby	87	1.5%	80	1.3%	+2%
Easton	19	.3%	23	.4%	-.1%
Fairfield	238	4.1%	272	4.4%	-.3%
Milford	375	6.3%	401	6.5%	-.2%
Monroe	133	2.2%	165	2.7%	-.5%
Seymour	56	.9%	73	1.2%	-.3%
Shelton	376	6.3%	404	6.5%	-.2%
Stratford	810	13.5%	801	12.9%	+6%
Trumbull	339	5.7%	337	5.4%	+3%
Total Students in Service Area	5,327	89.2%	5,597	90.0%	-.8%
Students Residing in Towns Not in Service Area	648	10.8%	618	10.0%	+8%
Total	5,975	100.0%	6,197	100.0%	100.0%

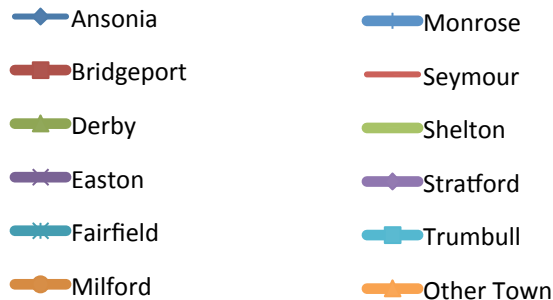
The numbers above reflect the current residency of the entire student body. It does not reflect the recruitment efforts of traditional age college students and should not be analyzed as such.

FINAL Enrollment Profile for Fall 2011 Semester

Headcount Enrollment by Town – Fall Semesters

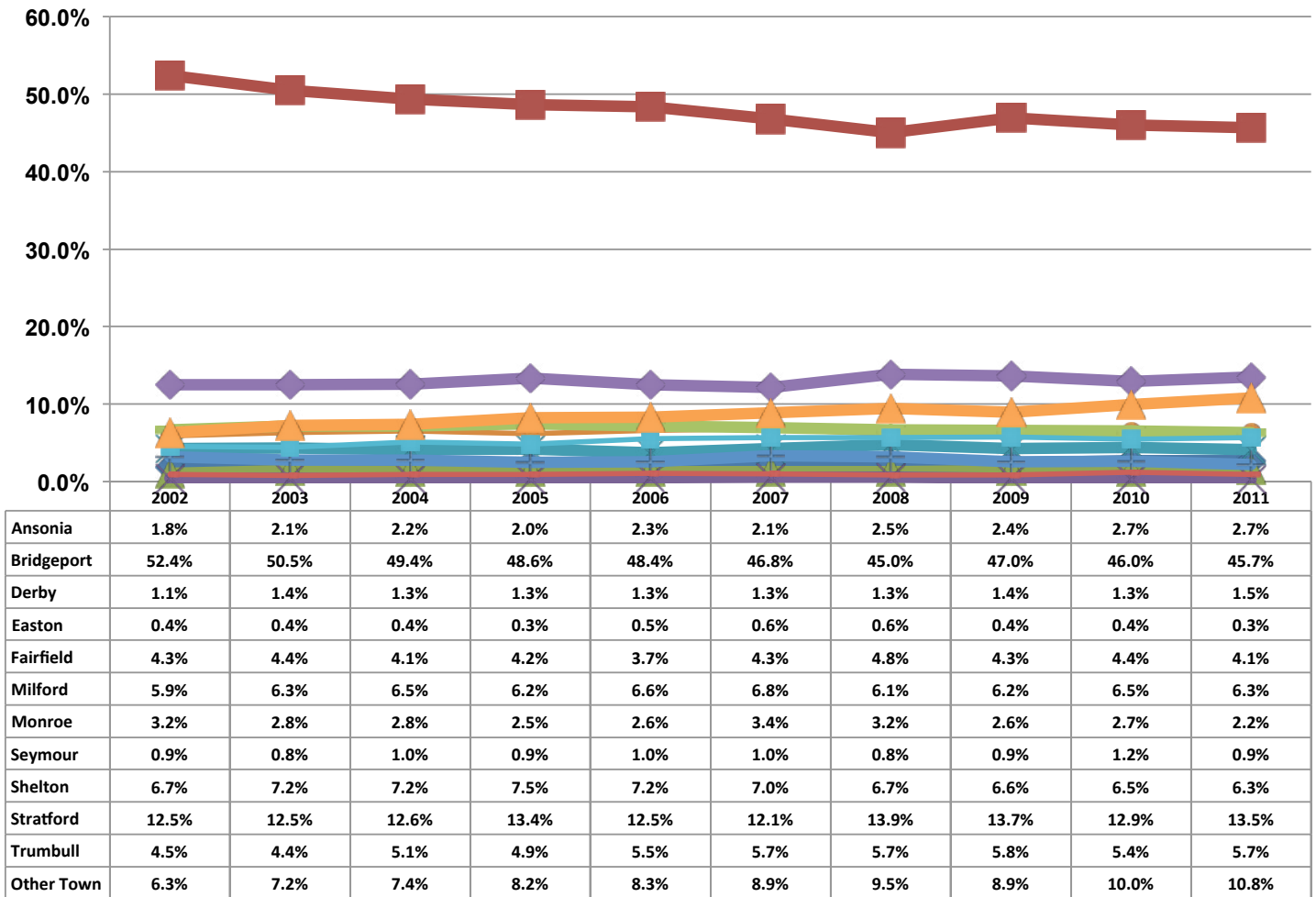


	2002	2003	2004	2005	2006	2007	2008	2009	2010	2011
Ansonia	83	97	103	91	100	96	125	134	166	162
Bridgeport	2,366	2,362	2,322	2,175	2,144	2,095	2,288	2,634	2,857	2,732
Derby	48	67	62	58	58	58	66	79	80	87
Easton	19	19	18	14	22	26	29	23	23	19
Fairfield	192	204	195	188	165	191	242	239	272	238
Milford	266	296	307	276	294	306	312	345	401	375
Monroe	143	130	131	112	115	151	162	144	165	133
Seymour	42	37	45	42	46	44	43	48	73	56
Shelton	302	337	339	334	319	312	338	372	404	376
Stratford	564	584	590	597	555	543	705	766	801	810
Trumbull	205	207	241	217	245	254	290	324	337	339
Other Town	285	338	348	367	368	399	481	501	618	648



FINAL Enrollment Profile for Fall 2011 Semester

Headcount Enrollment by Town Percentage of Enrollment



FINAL Enrollment Profile for Fall 2011 Semester

Associate Degree (Associate in Arts & Associate in Science)

Associate Degree Seeking Major	Primary Major	Secondary Major	Total
Accounting Asst	4	N/A	4
Accounting: Small Business Opt	7	1	8
Aviation Maintenance	6	N/A	6
Banking	7	N/A	7
BOT: EXECUTIVE ASST	18	5	23
BOT: WORD INFO PROC	4	2	6
Bus Administration: Customer Service/Marketing	30	4	34
Bus Administration: Finance	35	7	42
Bus Administration: General	241	4	245
Bus Administration: Global Business Opt	17		17
Bus Administration: Health Care Mgmt	2	2	4
Bus Administration: Human Resource Mgmt	21	2	23
Bus Administration: Management	112	4	116
Bus Administration: Small Bus Mgmt	54	1	55
CIS: Web Development	1	N/A	1
Computer Information Systems	124	1	125
Criminal Justice	490	6	496
Early Childhood Ed	295	5	300
Early Childhood: Spec Ed	28	N/A	28
Engineering Science	46	N/A	46
Fine Arts: Art	60	3	63
General Studies	2692	27	2722
Graphic Design	90	7	97
Graphic Design: Comp Graphics	4	N/A	4
Graphic Design: Multimedia Opt	32	1	33
Human Services	274	11	285
LAS: Computer Science	31	2	33
LAS: Hum/Behavioral & Social Science	215	11	226
LAS: Journalism/Communications	63	2	65
LAS: Math/Science	51	3	54
LAS: Pre-Engineering Science	36	2	38
LAS: Pre-Environmental Science	19	1	20
Nursing	30	N/A	30
Occupational Therapy Asst	35	N/A	35
Pathway to Teaching Careers	23	N/A	23
Physical Therapist Asst	9	N/A	9
Tech Studies: Eng Technology Opt	1	N/A	1
Tech Studies: Electrical	10	N/A	10
Technological Studies	1	N/A	1
Technological Studies: Industrial Tech	2	1	3
Technology Studies	1	N/A	1
Theater Arts	22	4	26
Total	5422	124	5549

FINAL Enrollment Profile for Fall 2011 Semester

Certificate Seeking

Certificate Degree Seeking	Primary Major	Secondary Major	Total
Accounting	4	1	5
Advanced English Proficiency	11	3	14
BOT: Admin Support Asst	2	N/A	2
Child Devl Associate Prep	7	5	12
Corrections	2	1	3
Criminal Investigation	14	8	22
Customer Service/Marketing	1	N/A	1
Early Childhood Ed	29	24	53
Electrical	1	N/A	1
Graphic Design	7	1	8
Health Career Pathways	9	5	14
HS: Behav Hlthcare Spec I	7	26	33
HS: Behavioral Health Care Sp II	N/A	1	1
HS: Child/Youth Mntl Hlth	4	7	11
HS: Mental Health	4	3	7
HS: Victim Services	1	2	3
Infant & Toddler Care	3	3	6
Network Administrator	1	1	2
PC Applications	2	7	9
PC Repair Technology	11	N/A	11
Police Management & Admin	4	2	6
Security Operations	1	1	2
Small Business Mgmt/Entrprn	3	N/A	3
Technical Web Site Design	5	3	8
Web Design - Technology	5	1	6
Total	138	105	243

FINAL Enrollment Profile for Fall 2011 Semester

Advisors, Counselors, and Faculty Advisors

ADVISORS	Number of Students
No Advisor Assigned	43
Abbe, Ronald B	4
Adams, Rebecca	84
Albaz, Asher	90
Amico, Michael C	66
Anzenberger, Joanne	116
Ball, Anthony	1
Barnes, Sandra	901
Becker, Edward	83
Benezra, Theodora	32
Boylan, Kevin M	55
Brown, David E	55
Burbank, Madeleine	14
Cahill-Lambole, Maureen	32
Cercone, Kathleen	76
Chance, Edwena S	112
Chavis, Tracey S	1
Clark, Mary K	383
Coba-Loh, Claudine J	13
Cohen, Michele	126
Conway, Janice	41
Cote, Andrew	18

ADVISORS	Number of Students
Leach, Mark	65
Leo, Jacqueline	1
Lloyd, Joan	49
Maloney, Maureen M	2
Mandel, Michael R	138
Mannion, Samantha	213
Mark, Steven W	107
Meyrick, Charles W	5
Micinilio, Kathleen	69
Moncrieffe, Aubrey J	2
Monroe, Susan	32
Nelson, Robert E	107
Noe, Laurie	178
Nulty, Marie C	3
O'Donnell, Eileen	1
Ortiz, Jamilet R	43
Pappantoniou, Antonios	10
Philips, Marina	109
Pinto, Andrew N	43
Pirog, Pamela J	146
Ravanshad, Farshad	2
Reed, Michele	63

FINAL Enrollment Profile for Fall 2011 Semester

Danzer, Paul M	8
Dawson, Asantewa	68
DePietro, Paul T	2
Dolyak, Barbara	13
Eady, Mary E	3
Empric, Scott	87
Favret, John L	152
Gallagher, Joan F	211
Galluzzi, Jennifer	67
George, Thomas S	1
Griffin, William R	3
Grossman, William G	31
Hart, Stephanie A	26
Hughes, Kirk	53
Keane, Edward C	203
Keenan, Paul J	159
Kindilien, Glenn A	1
Kocay, Michelle	59
Koch, David A	41
Kongsvold, John S	1
Kozek, Teresa A	58
Krill, Vernon J	166
Lanci, Janet M	58
Langella, Lynne P	2

Richards, Barbara E	85
Rizzi, Richard	57
Roche, Maria S	28
Rose, Eddie B	19
Ryder, Robert	77
Samberg, Rebecca	56
Shain, Cheryl L	12
Shea, Jonathan D	9
Sheehan, Geoffrey T	41
Smith, Karyn L	26
Sommers, Irene J	80
Sopchak, John C	60
Steeves, Elizabeth	77
Szobota, Heidi W	10
Tibor, John	2
Toedt, Kathleen	1
Tomey, Shelley S	43
Ulisse, Peter J	1
Valovcin, Mary Ann	45
Wolf, Jessica	1
Yepes, Hernan	1
Zajdel, Shirley	31
Zamparo, Janet	10
Total	5,975