

FAST FACTS – National Retention Rates

Each year ACT publishes retention data entitled, “National Collegiate Retention and Persistence-to-Degree Rates”. In the most **recent document**, it was reported that retention rates at two year public colleges reached fifty-seven percent (57.4%) for the Fall 2015 cohort. This information is part of the longitudinal research study conducted by ACT, Inc., since 1983.

Housatonic Community College has continuously exceeded the average retention rates found for two-year public colleges over the years. This past year, however, the fall 2015 cohort was retained at slightly under the average national retention rate, but the fall 2016 cohort has risen to sixty-four percent (64.2%) for HCC.

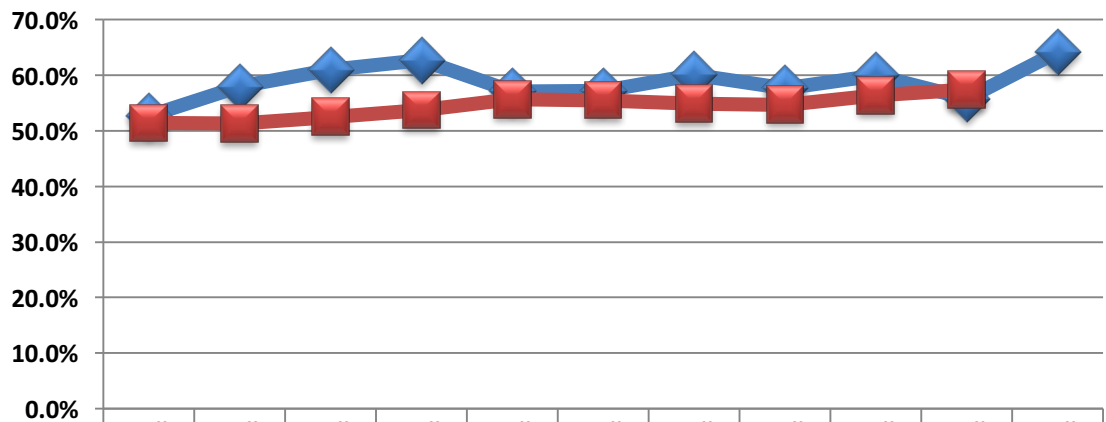
This means that fifty-six percent (55.8)% of HCC’s first time full-time degree seeking students returned to HCC in Fall of 2016. We await from the numbers to come in next year from ACT, Inc. to compare.

To access the source of the latest report, please click on the link below:

<http://www.act.org/content/dam/act/unsecured/documents/Retention-Persistence-Tables-2017.pdf>

Fall to Fall Retention Rates

**Retention rate calculated as the number of first time/full time degree seeking students entering in the fall cohort and registered the following fall semester.*



| | Fall 2006 cohort | Fall 2007 cohort | Fall 2008 cohort | Fall 2009 cohort | Fall 2010 cohort | Fall 2011 cohort | Fall 2012 cohort | Fall 2013 cohort | Fall 2014 cohort | Fall 2015 cohort | Fall 2016 cohort |
|--|------------------|------------------|------------------|------------------|------------------|------------------|------------------|------------------|------------------|------------------|------------------|
| ◆ HCC | 52.7% | 58.0% | 61.0% | 62.7% | 57.1% | 57.2% | 60.1% | 57.7% | 60.0% | 55.8% | 64.2% |
| ■ National Findings from ACT, Inc.-2 year public | 51.4% | 51.3% | 52.5% | 53.7% | 55.7% | 55.5% | 54.9% | 54.7% | 56.4% | 57.4% | |