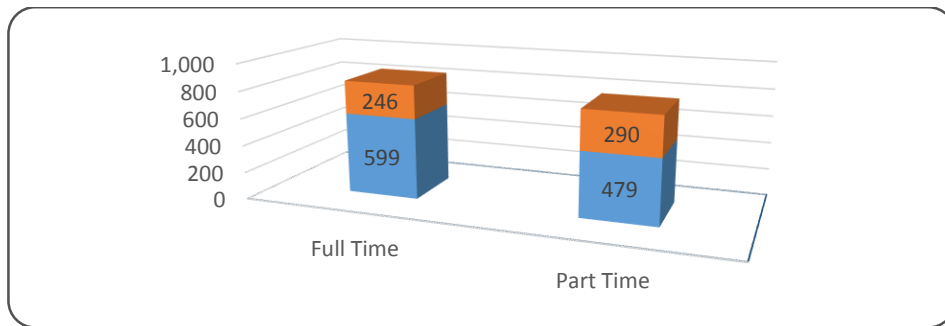




Retention Data – 2015 Cohort

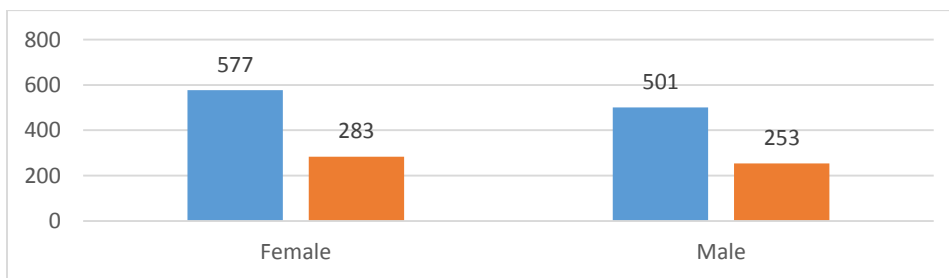
Of the 1,078 new freshmen students entering in fall 2015, 49.7% (n=536) were retained the first year. It is interesting to note that there are very little differences in the retention rates among gender and race/ethnicity. Most of the students at Housatonic Community College live in Bridgeport, Stratford, and Trumbull and are similarly retained at approximately 50%.

	2015-16		
	# New in Fa15	# Retained in Fa16	% Retained
Full Time	599	246	41.1%
Part Time	479	290	60.5%



Gender

	2015-16		
	# New in Fa15	# Retained in Fa16	% Retained
Female	577	283	49.0%
Male	501	253	50.5%

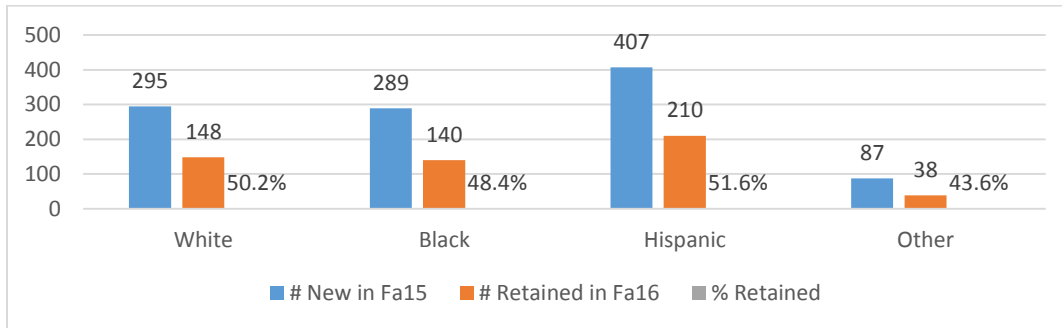


Females and Males tend to be retained at approximately the same rate at 49% and 51% respectively.

Race/Ethnicity

	2015-16		
	# New in Fa15	# Retained in Fa16	% Retained
White	295	148	50.2%
Black	289	140	48.4%
Hispanic	407	210	51.6%
Asian	35	19	54.3%
American Indian/Alaskan	-	-	-
Native Hawaiian/Pacific Islander	1	0	0.0%
Multi Race	20	16	80.0%
Did Not Respond	31	3	9.7%

*Other includes Asian, Native American/Pacific Islander, Multi-Race and No Responses.



Residency

	2015-16		
	# New in Fa15	# Retained in Fa16	% Retained
Ansonia	24	12	50.0%
Bridgeport	580	288	49.7%
Derby	12	3	25.0%
Easton	3	1	33.3%
Fairfield	27	17	63.0%
Milford	47	25	53.2%
Monroe	25	22	88.0%
Seymour	4	2	50.0%
Shelton	62	29	46.8%
Stratford	164	85	51.8%
Trumbull	57	28	49.1%
Other	73	24	32.9%