



**HOUSATONIC**  
COMMUNITY COLLEGE

2016-2017

# Connecticut Community Colleges Data Comparison Report



Office of Institutional  
Research, Planning, and  
Effectiveness Beacon Hall 285  
Spring 2017

# Table of Contents

List of CT Community Colleges.....	2
Headcount Enrollment .....	3
Full-Time and Part-Time Enrollment .....	4
FTE.....	5
Degree and Certificates Awarded .....	6
IPEDS Comparison Counts.....	7
Full Time Retention Rates .....	7
Part Time Retention Rates.....	8
Graduation Rate and Percentage of Total Entering Students.....	9
Percent of Full Time Students Receiving Pell Grants.....	10
Program Completions – two years .....	11
Program Completions – three years.....	12
Program Completions – four years .....	13

Sources: 2016 IPEDS Data Feedback report (published February 2017)  
BOR System Fall Enrollment report

# CT Community College Comparisons Report

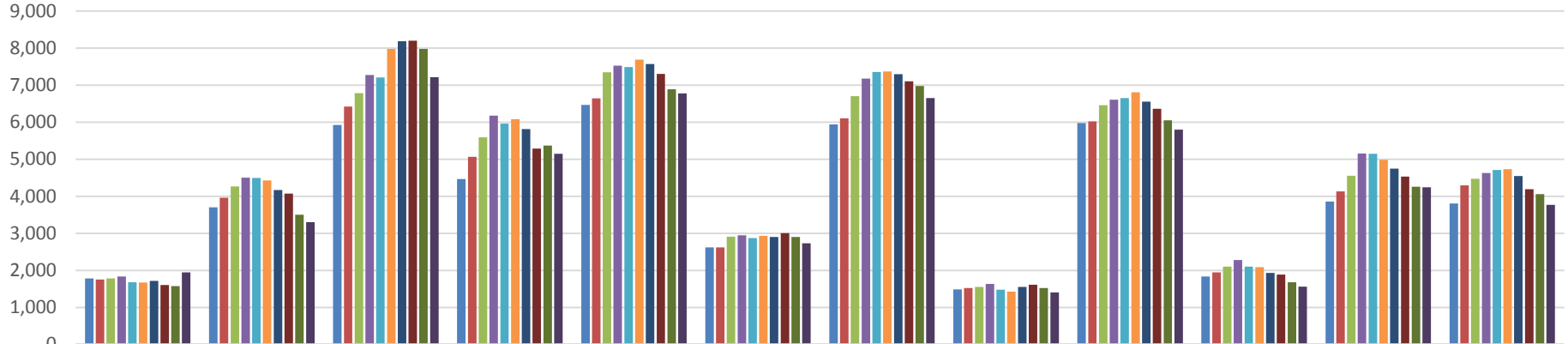
---

## List of CT Community Colleges

<b><i>College</i></b>	<b><i>Town</i></b>
Asnuntuck	Enfield
Capital	Hartford
Gateway	New Haven
Housatonic	Bridgeport
Manchester	Manchester
Middlesex	Middletown
Naugatuck Valley	Waterbury
Northwestern	Winsted
Norwalk	Norwalk
Quinebaug Valley	Danielson and Willimantic
Three Rivers	Norwich
Tunxis	Farmington

# Enrollment Headcount

**Total Fall Enrollment**

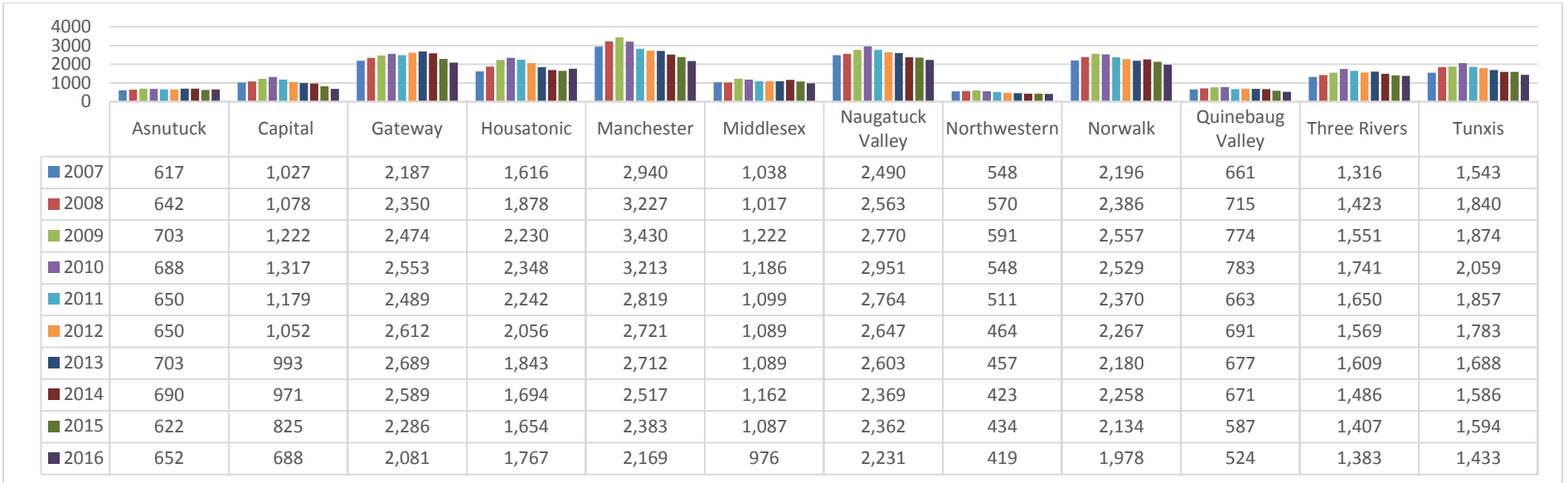


	Asnutuck	Capital	Gateway	Housatonic	Manchester	Middlesex	Naugatuck Valley	Northwestern	Norwalk	Quinebaug Valley	Three Rivers	Tunxis
■ 2007	1,783	3,702	5,923	4,464	6,467	2,620	5,943	1,483	5,973	1,836	3,857	3,809
■ 2008	1,752	3,964	6,418	5,065	6,643	2,617	6,106	1,525	6,018	1,942	4,129	4,294
■ 2009	1,781	4,268	6,785	5,588	7,348	2,911	6,700	1,556	6,457	2,100	4,557	4,473
■ 2010	1,832	4,503	7,271	6,177	7,529	2,949	7,179	1,635	6,605	2,282	5,157	4,630
■ 2011	1,682	4,492	7,210	5,964	7,486	2,875	7,352	1,482	6,653	2,098	5,147	4,711
■ 2012	1,673	4,425	7,976	6,077	7,692	2,933	7,369	1,423	6,810	2,086	4,980	4,734
■ 2013	1,715	4,168	8,186	5,813	7,571	2,900	7,294	1,549	6,556	1,929	4,749	4,547
■ 2014	1,603	4,075	8,200	5,286	7,300	3,005	7,102	1,614	6,363	1,883	4,530	4,193
■ 2015	1,571	3,503	7,980	5,369	6,891	2,902	6,976	1,521	6,054	1,680	4,259	4,055
■ 2016	1,945	3,302	7,217	5,143	6,780	2,733	6,651	1,406	5,800	1,559	4,245	3,767

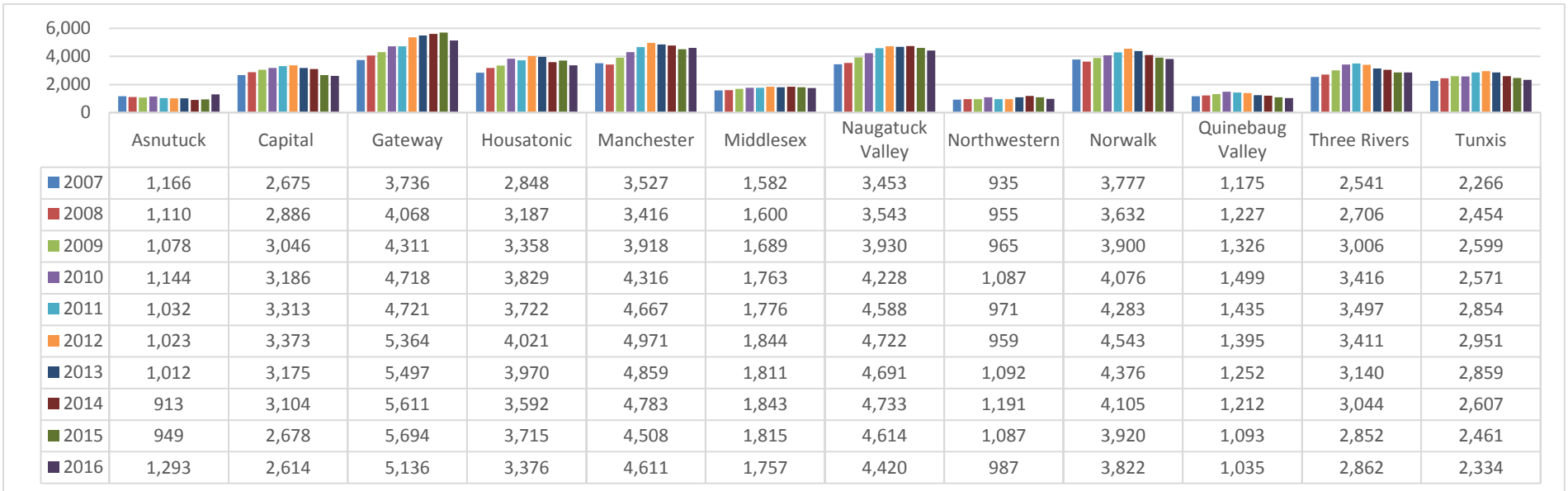
**Source: 2016 Data Feedback Report**

**Note: Headcount figures do not include students who exclusively audited courses and may differ from other reports, Source: System Enrollment Report**

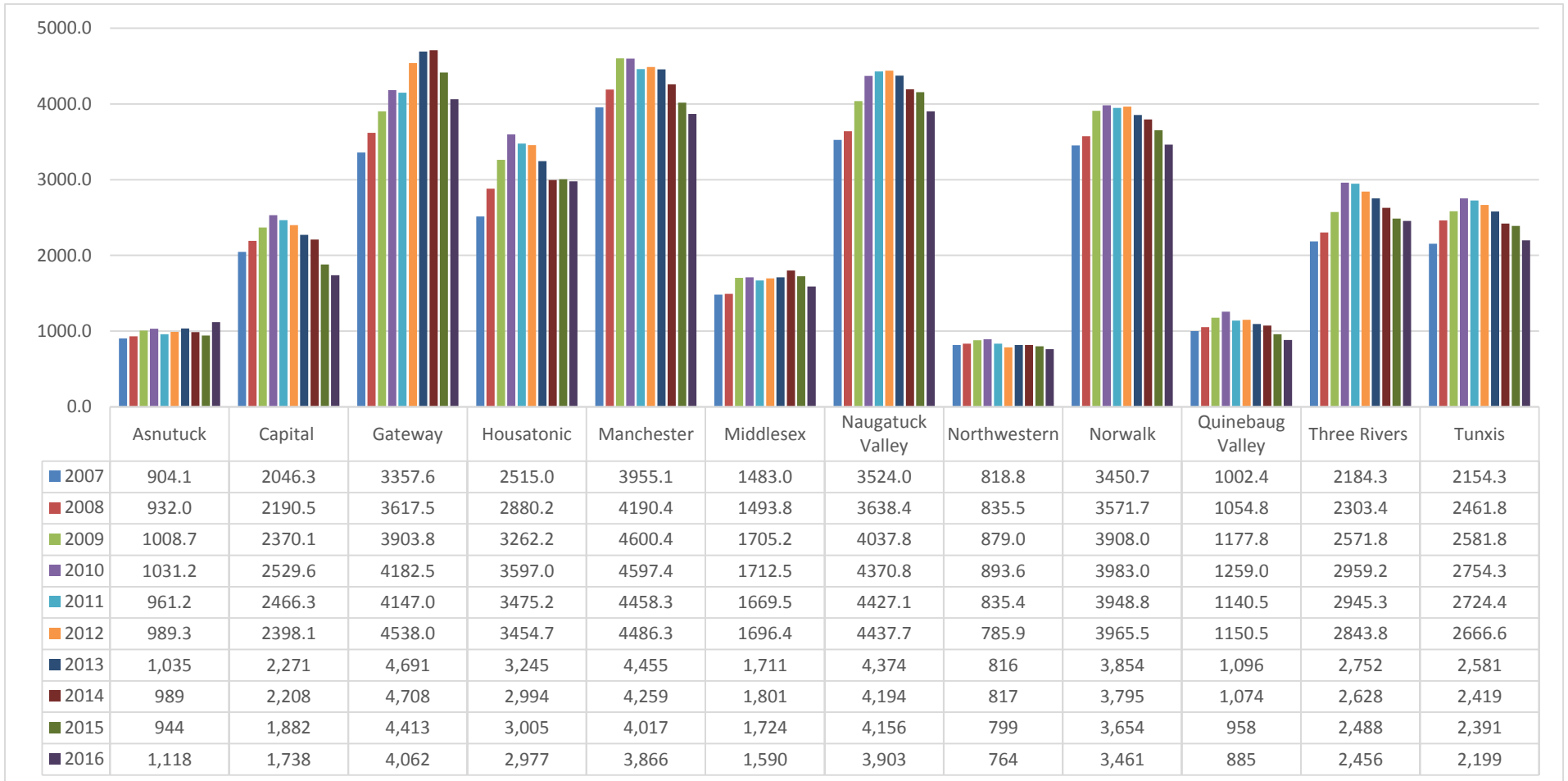
## Full-Time Fall Enrollment Headcount



## Part-Time Fall Enrollment Headcount



## Full-Time Equivalency (FTE) Fall Enrollment

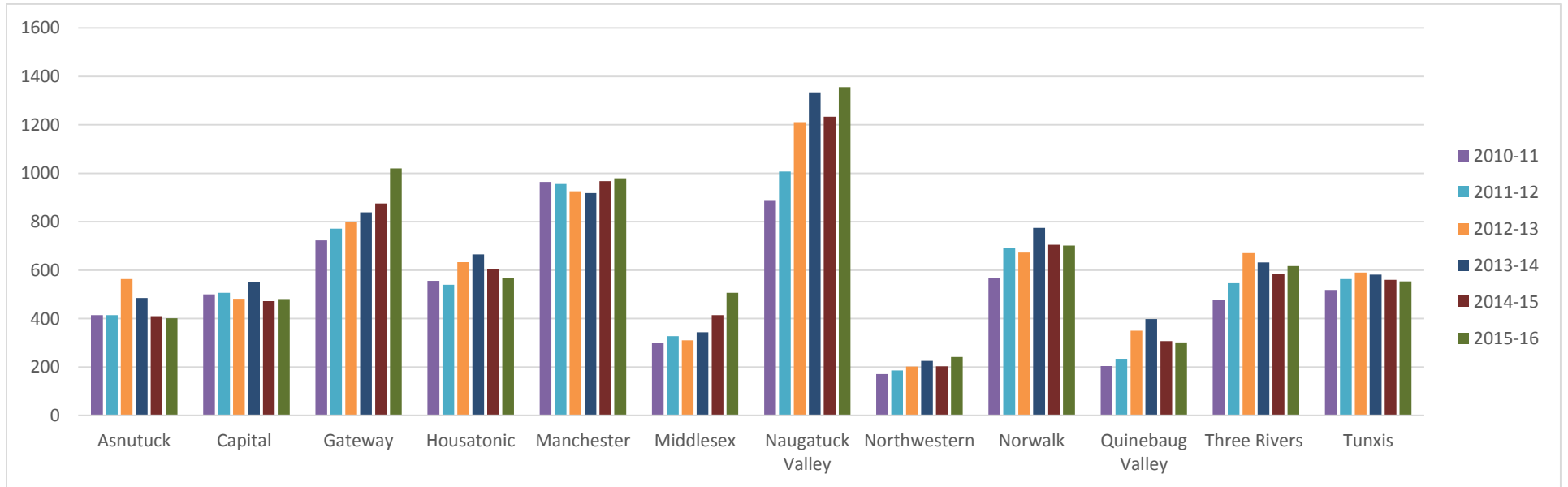


**Note: Headcount figures do not include students who exclusively audited courses and may differ from other reports, *Source: System Enrollment Report***

## Degree and Certificates Awarded

Semester	2010-11		2011-12		2012-13		2013-14		2014-15		2015-16	
College	#	%	#	%	#	%	#	%	#	%	#	%
Asnuntuck	414	6.6%	414	6.1%	563	7.6%	485	6.3%	410	5.6%	401	5.2%
Capital	500	8.0%	507	7.5%	482	6.5%	552	7.1%	472	6.4%	481	6.2%
Gateway	723	11.5%	771	11.4%	799	10.8%	839	10.8%	875	11.9%	1,020	13.2%
<b>Housatonic</b>	<b>556</b>	<b>8.9%</b>	<b>540</b>	<b>8.0%</b>	<b>633</b>	<b>8.5%</b>	<b>665</b>	8.6%	605	8.2%	566	7.3%
Manchester	964	15.3%	956	14.2%	926	12.5%	918	11.8%	967	13.2%	979	12.7%
Middlesex	301	4.8%	327	4.9%	310	4.2%	344	4.4%	414	5.6%	507	6.6%
Naugatuck Valley	886	14.1%	1,007	14.9%	1211	16.3%	1334	17.2%	1,233	16.8%	1,356	17.5%
Northwestern	171	2.7%	186	2.8%	202	2.7%	226	2.9%	203	2.8%	242	3.1%
Norwalk	568	9.0%	691	10.2%	673	9.1%	775	10.0%	705	9.6%	702	9.1%
Quinebaug Valley	204	3.2%	234	3.5%	350	4.7%	398	5.1%	307	4.2%	302	3.9%
Three Rivers	477	7.6%	546	8.1%	671	9.1%	632	8.2%	586	8.0%	617	8.0%
Tunxis	518	8.2%	563	8.4%	590	8.0%	581	7.5%	560	7.6%	554	7.2%
<b>Total</b>	<b>6,282</b>	100.0%	<b>6,742</b>	100.0%	<b>7,410</b>	100.0%	<b>7,749</b>	100.0%	<b>7,337</b>	100.0%	<b>7,727</b>	100.00%

% = Percentage of all degrees awarded within the Community College system. Source: 2016 Data Feedback report and IPEDS 2015-16 Completions

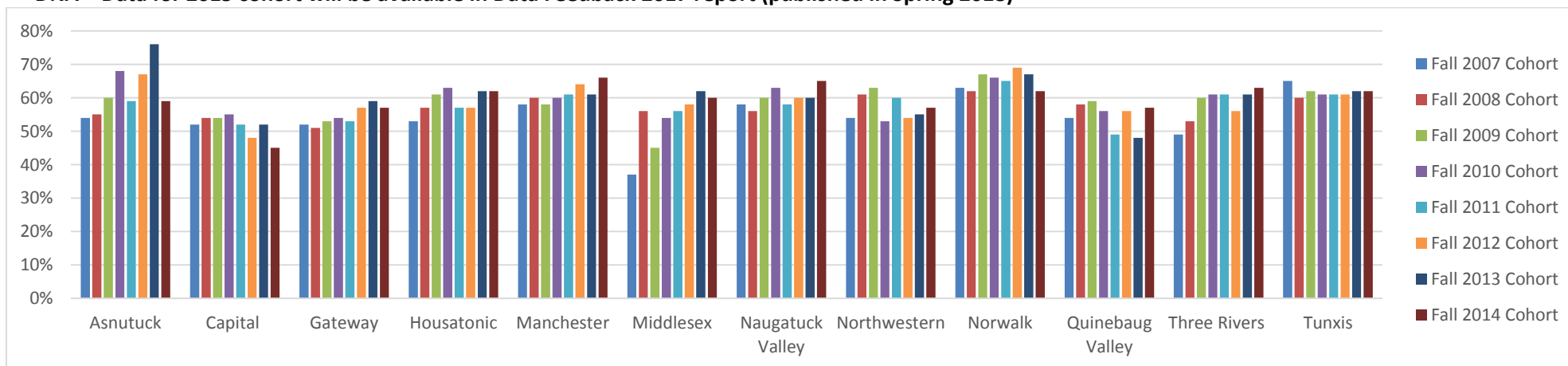


# Integrated Postsecondary Education Data System (IPEDS) Comparison

## First Time, Full-Time Cohort Retention Rates for Undergraduate Students

	Fall 2007 Cohort	Fall 2008 Cohort	Fall 2009 Cohort	Fall 2010 Cohort	Fall 2011 Cohort	Fall 2012 Cohort	Fall 2013 Cohort	Fall 2014 Cohort	Fall 2015 Cohort
Asnuntuck	54%	55%	60%	68%	59%	67%	76%	59%	DNA *
Capital	52%	54%	54%	55%	52%	48%	52%	45%	
Gateway	52%	51%	53%	54%	53%	57%	59%	57%	
<b>Housatonic</b>	<b>53%</b>	<b>57%</b>	<b>61%</b>	<b>63%</b>	<b>57%</b>	<b>57%</b>	<b>62%</b>	<b>62%</b>	
Manchester	58%	60%	58%	60%	61%	64%	61%	66%	
Middlesex	37%	56%	45%	54%	56%	58%	62%	60%	
Naugatuck Valley	58%	56%	60%	63%	58%	60%	60%	65%	
Northwestern	54%	61%	63%	53%	60%	54%	55%	57%	
Norwalk	63%	62%	67%	66%	65%	69%	67%	62%	
Quinebaug Valley	54%	58%	59%	56%	49%	56%	48%	57%	
Three Rivers	49%	53%	60%	61%	61%	56%	61%	63%	
Tunxis	65%	60%	62%	61%	61%	61%	62%	62%	
<b>Lowest</b>	<b>37%</b>	<b>51%</b>	<b>45%</b>	<b>53%</b>	<b>49%</b>	<b>48%</b>	<b>48%</b>	<b>45%</b>	
<b>Highest</b>	<b>65%</b>	<b>62%</b>	<b>67%</b>	<b>68%</b>	<b>65%</b>	<b>69%</b>	<b>76%</b>	<b>66%</b>	

\* DNA = Data for 2015 cohort will be available in Data Feedback 2017 report (published in Spring 2018)



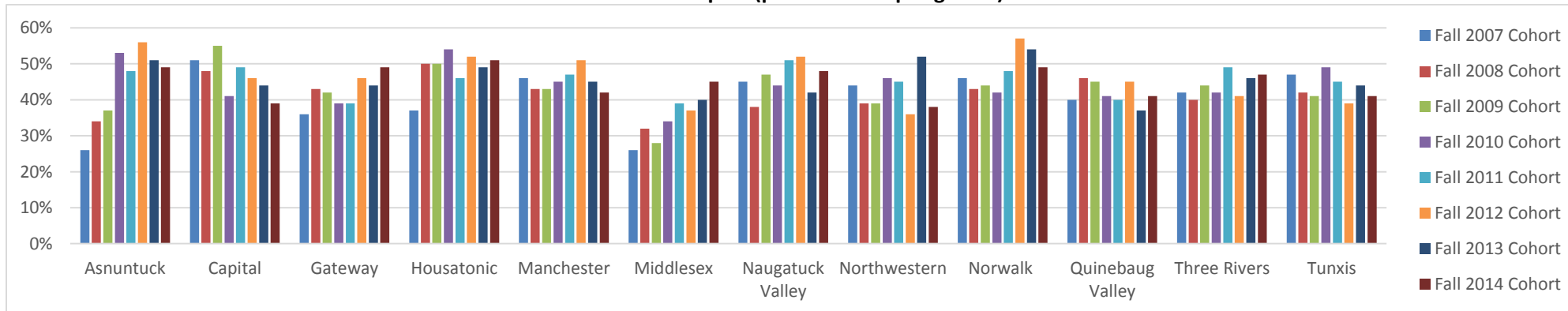


# Integrated Postsecondary Education Data System (IPEDS) Comparison

## First Time, Part-Time Cohort Retention Rates for Undergraduate Students

	Fall 2007 Cohort	Fall 2008 Cohort	Fall 2009 Cohort	Fall 2010 Cohort	Fall 2011 Cohort	Fall 2012 Cohort	Fall 2013 Cohort	Fall 2014 Cohort	Fall 2015 Cohort
Asnuntuck	26%	34%	37%	53%	48%	56%	51%	49%	<b>DNA *</b>
Capital	51%	48%	55%	41%	49%	46%	44%	39%	
Gateway	36%	43%	42%	39%	39%	46%	44%	49%	
<b>Housatonic</b>	<b>37%</b>	<b>50%</b>	<b>50%</b>	<b>54%</b>	<b>46%</b>	<b>52%</b>	<b>49%</b>	<b>51%</b>	
Manchester	46%	43%	43%	45%	47%	51%	45%	42%	
Middlesex	26%	32%	28%	34%	39%	37%	40%	45%	
Naugatuck Valley	45%	38%	47%	44%	51%	52%	42%	48%	
Northwestern	44%	39%	39%	46%	45%	36%	52%	38%	
Norwalk	46%	43%	44%	42%	48%	57%	54%	49%	
Quinebaug Valley	40%	46%	45%	41%	40%	45%	37%	41%	
Three Rivers	42%	40%	44%	42%	49%	41%	46%	47%	
Tunxis	47%	42%	41%	49%	45%	39%	44%	41%	
<b>Lowest</b>	<b>26%</b>	<b>32%</b>	<b>28%</b>	<b>34%</b>	<b>39%</b>	<b>36%</b>	<b>37%</b>	<b>38%</b>	
<b>Highest</b>	<b>51%</b>	<b>50%</b>	<b>55%</b>	<b>54%</b>	<b>51%</b>	<b>57%</b>	<b>54%</b>	<b>51%</b>	

\* DNA = Data for 2015 cohort will be available in Data Feedback 2017 report (published in Spring 2018)

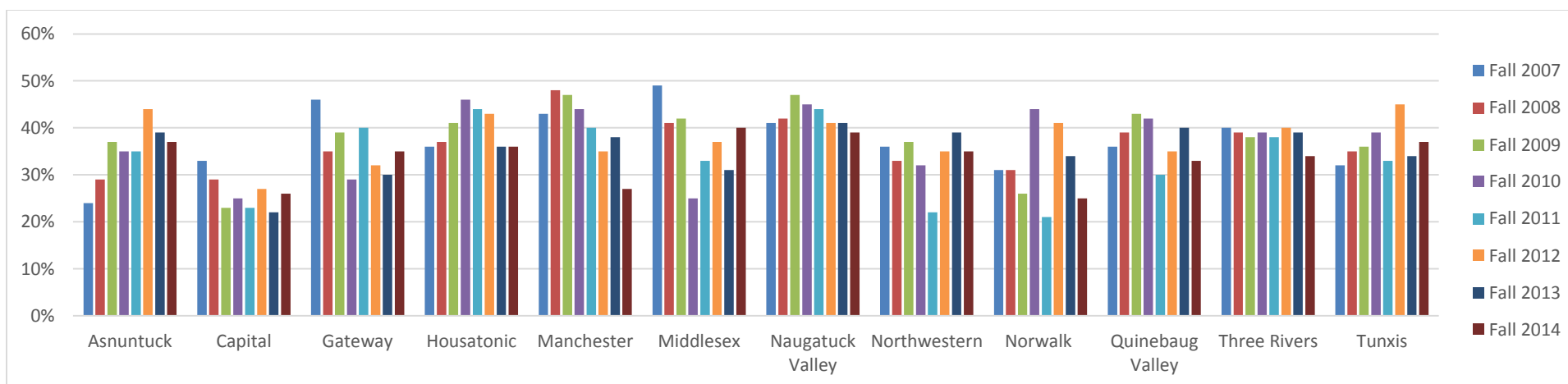


# Integrated Postsecondary Education Data System (IPEDS) Comparison

## First Time, Full Time Graduation Rate Cohort (GRS) as a Percent of Total Entering Students (includes New Part-Time and Transfer Students)

	Fall 2007 Cohort	Fall 2008 Cohort	Fall 2009 Cohort	Fall 2010 Cohort	Fall 2011 Cohort	Fall 2012 Cohort	Fall 2013 Cohort	Fall 2014 Cohort
Asnuntuck	24%	29%	37%	35%	35%	44%	39%	37%
Capital	33%	29%	23%	25%	23%	27%	22%	26%
Gateway	46%	35%	39%	29%	40%	32%	30%	35%
<b>Housatonic</b>	<b>36%</b>	<b>37%</b>	<b>41%</b>	<b>46%</b>	<b>44%</b>	<b>43%</b>	<b>36%</b>	<b>36%</b>
Manchester	43%	48%	47%	44%	40%	35%	38%	27%
Middlesex	49%	41%	42%	25%	33%	37%	31%	40%
Naugatuck Valley	41%	42%	47%	45%	44%	41%	41%	39%
Northwestern	36%	33%	37%	32%	22%	35%	39%	35%
Norwalk	31%	31%	26%	44%	21%	41%	34%	25%
Quinebaug Valley	36%	39%	43%	42%	30%	35%	40%	33%
Three Rivers	40%	39%	38%	39%	38%	40%	39%	34%
Tunxis	32%	35%	36%	39%	33%	45%	34%	37%

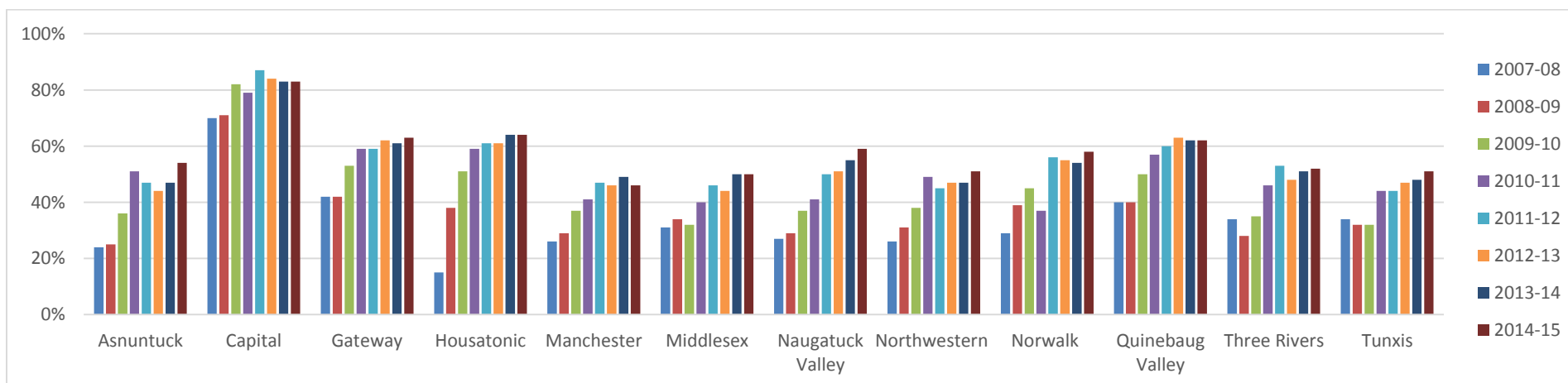
Source came from the IPEDS Fall Enrollment reports for the Data Feedback reports. This information is no longer being reported in the DFR (2016)



# Integrated Postsecondary Education Data System (IPEDS) Comparison

## Percent of First-time Full-time Students who Received Pell Grants

	2006-07 Cohort	2007-08 Cohort	2008-09 Cohort	2009-10 Cohort	2010-11 Cohort	2011-12 Cohort	2012-13 Cohort	2013-14 Cohort	2014-15 Cohort
Asnuntuck		24%	25%	36%	51%	47%	44%	47%	54%
Capital		70%	71%	82%	79%	87%	84%	83%	83%
Gateway		42%	42%	53%	59%	59%	62%	61%	63%
<b>Housatonic</b>		<b>15%</b>	<b>38%</b>	<b>51%</b>	<b>59%</b>	<b>61%</b>	<b>61%</b>	<b>64%</b>	<b>64%</b>
Manchester	IPEDS DID NOT COLLECT THIS DATA	26%	29%	37%	41%	47%	46%	49%	46%
Middlesex		31%	34%	32%	40%	46%	44%	50%	50%
Naugatuck Valley		27%	29%	37%	41%	50%	51%	55%	59%
Northwestern		26%	31%	38%	49%	45%	47%	47%	51%
Norwalk		29%	39%	45%	37%	56%	55%	54%	58%
Quinebaug Valley		40%	40%	50%	57%	60%	63%	62%	62%
Three Rivers		34%	28%	35%	46%	53%	48%	51%	52%
Tunxis		34%	32%	32%	44%	44%	47%	48%	51%

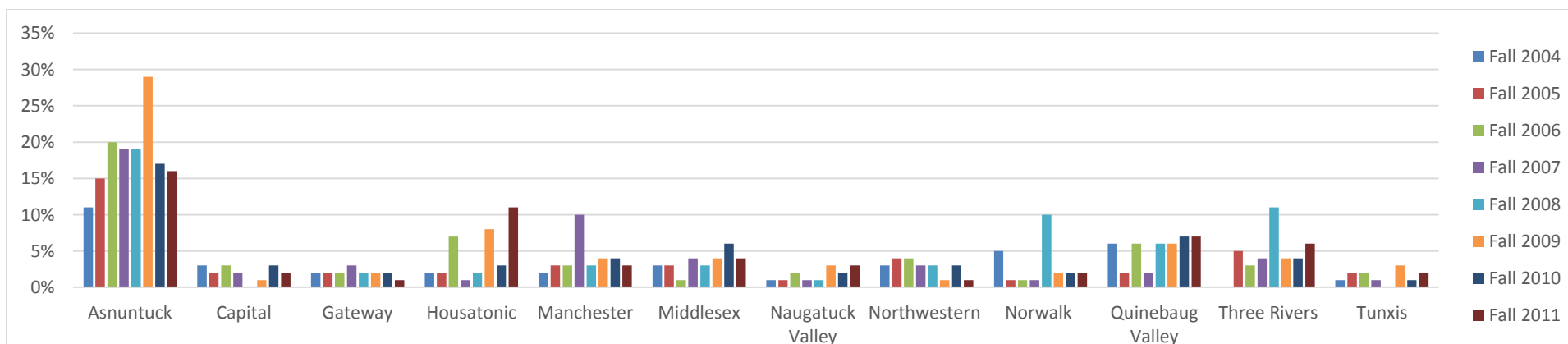


NOTE: Any grant aid above includes grant or scholarship aid from the federal government, state/local government, or the institution. Federal grants include Pell grants and other federal grants. Any loans include federal loans and other loans to students. SOURCE: U.S. Department of Education, National Center for Education Statistics, Integrated Postsecondary Education Data System (IPEDS)

# Integrated Postsecondary Education Data System (IPEDS) Comparison

## Time to Program Completion: First Time, Full Time Cohort Normal time (two years)

	Fall 2004 Cohort	Fall 2005 Cohort	Fall 2006 Cohort	Fall 2007 Cohort	Fall 2008 Cohort	Fall 2009 Cohort	Fall 2010 Cohort	Fall 2011 Cohort
Asnuntuck	11%	15%	20%	19%	19%	29%	17%	16%
Capital	3%	2%	3%	2%	0%	1%	3%	2%
Gateway	2%	2%	2%	3%	2%	2%	2%	1%
<b>Housatonic</b>	<b>2%</b>	<b>2%</b>	<b>7%</b>	<b>1%</b>	<b>2%</b>	<b>8%</b>	<b>3%</b>	<b>11%</b>
Manchester	2%	3%	3%	10%	3%	4%	4%	3%
Middlesex	3%	3%	1%	4%	3%	4%	6%	4%
Naugatuck Valley	1%	1%	2%	1%	1%	3%	2%	3%
Northwestern	3%	4%	4%	3%	3%	1%	3%	1%
Norwalk	5%	1%	1%	1%	10%	2%	2%	2%
Quinebaug Valley	6%	2%	6%	2%	6%	6%	7%	7%
Three Rivers	0%	5%	3%	4%	11%	4%	4%	6%
Tunxis	1%	2%	2%	1%	0%	3%	1%	2%

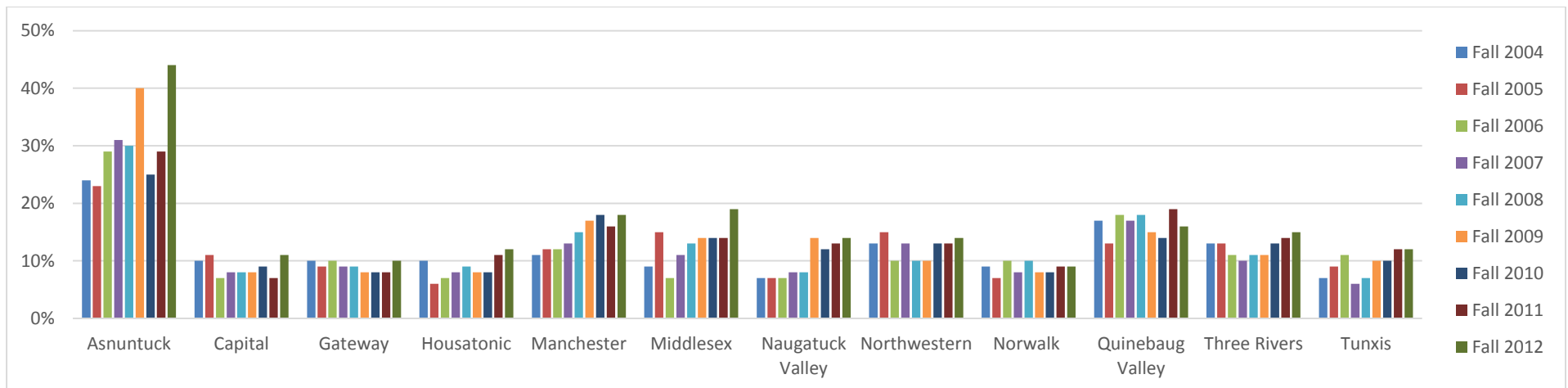


NOTE: The 150% graduation rate is the Student Right-to-Know (SRK) rates; the Normal time and 200% rates are calculated using the same methodology. SOURCE: U.S. Department of Education, National Center for Education Statistics, Integrated Postsecondary Education Data System (IPEDS): Graduation Rates component. As reported in the 2016 Data Feedback report.

# Integrated Postsecondary Education Data System (IPEDS) Comparison

Time to Program Completion: First Time, Full Time Cohort 150% of Normal Time (three years)

	Fall 2004 Cohort	Fall 2005 Cohort	Fall 2006 Cohort	Fall 2007 Cohort	Fall 2008 Cohort	Fall 2009 Cohort	Fall 2010 Cohort	Fall 2011 Cohort	Fall 2012 Cohort
Asnuntuck	24%	23%	29%	31%	30%	40%	25%	29%	44%
Capital	10%	11%	7%	8%	8%	8%	9%	7%	11%
Gateway	10%	9%	10%	9%	9%	8%	8%	8%	10%
<b>Housatonic</b>	<b>10%</b>	<b>6%</b>	<b>7%</b>	<b>8%</b>	<b>9%</b>	<b>8%</b>	<b>8%</b>	<b>11%</b>	<b>12%</b>
Manchester	11%	12%	12%	13%	15%	17%	18%	16%	18%
Middlesex	9%	15%	7%	11%	13%	14%	14%	14%	19%
Naugatuck Valley	7%	7%	7%	8%	8%	14%	12%	13%	14%
Northwestern	13%	15%	10%	13%	10%	10%	13%	13%	14%
Norwalk	9%	7%	10%	8%	10%	8%	8%	9%	9%
Quinebaug Valley	17%	13%	18%	17%	18%	15%	14%	19%	16%
Three Rivers	13%	13%	11%	10%	11%	11%	13%	14%	15%
Tunxis	7%	9%	11%	6%	7%	10%	10%	12%	12%

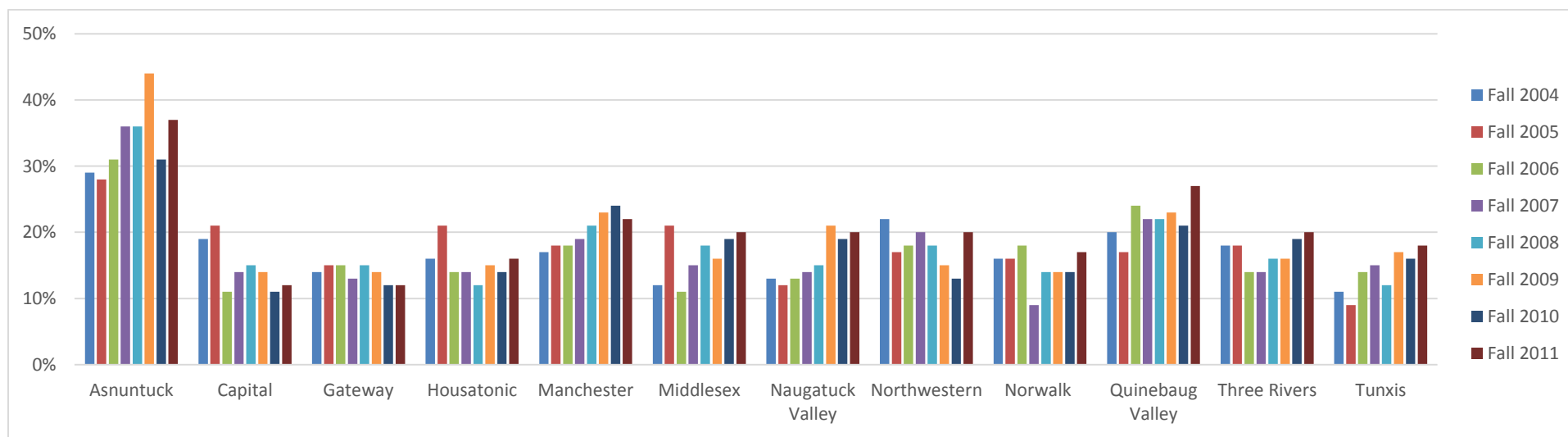


# Integrated Postsecondary Education Data System (IPEDS) Comparison

## Time to Program Completion: First Time, Full Time Cohort 200% of Normal Time (four years)

	Fall 2004 Cohort	Fall 2005 Cohort	Fall 2006 Cohort	Fall 2007 Cohort	Fall 2008 Cohort	Fall 2009 Cohort	Fall 2010 Cohort	Fall 2011 Cohort	Fall 2012 Cohort
Asnuntuck	29%	28%	31%	36%	36%	44%	31%	37%	DNA *
Capital	19%	21%	11%	14%	15%	14%	11%	12%	
Gateway	14%	15%	15%	13%	15%	14%	12%	12%	
<b>Housatonic</b>	<b>16%</b>	<b>21%</b>	<b>14%</b>	<b>14%</b>	<b>12%</b>	<b>15%</b>	<b>14%</b>	<b>16%</b>	
Manchester	17%	18%	18%	19%	21%	23%	24%	22%	
Middlesex	12%	21%	11%	15%	18%	16%	19%	20%	
Naugatuck Valley	13%	12%	13%	14%	15%	21%	19%	20%	
Northwestern	22%	17%	18%	20%	18%	15%	13%	20%	
Norwalk	16%	16%	18%	9%	14%	14%	14%	17%	
Quinebaug Valley	20%	17%	24%	22%	22%	23%	21%	27%	
Three Rivers	18%	18%	14%	14%	16%	16%	19%	20%	
Tunxis	11%	9%	14%	15%	12%	17%	16%	18%	

\* DNA = Data for 2012 cohort will be available in Data Feedback 2017 report (published in Spring 2018)



NOTE: The 150% graduation rate is the Student Right-to-Know (SRK) rates; the Normal time and 200% rates are calculated using the same methodology. SOURCE: U.S. Department of Education, National Center for Education Statistics, Integrated Postsecondary Education Data System (IPEDS): Graduation Rates component. As reported in the 2016 Data Feedback report.